



SUPERLUX 2

The low-profile, lightweight, SuperLux 2 is an easy to install, single lens, 1000W equivalent light fixture for mounting up to 130 feet. With an industry-leading luminous efficacy, its high-quality lumen output and narrow beam spread creates a brighter, safer working environment.

Ideal for high ceiling high bay lighting or crane lighting where a flood light is needed.

KEY FEATURES:

- **Low Profile** High Bay
- **160lm/W** - Industry Leading Luminous Efficacy
- **72,000** Lumen Output
- **Standard or Heavy Duty Custom Bracket**
- Optional **Visor** for Mast Lighting
- Directional Beam Spread **Maximizes Foot Candles**
- **Single Lens**, 28 lb Replacement for 1000W
- Designed for **High Ceiling** Applications **60' to 130'+**



SPECIFICATIONS

Luminous Efficacy	160lm/W
CCT	3000K, 4000K, 5000K (Standard)
CRI	>Ra70
Beam Angle	30°, 60°, 90°, 120° (Standard)
Input Voltage	100-277 Vac (Standard) 277-480Vac, 50/60 Hz
IP Rating	IP65
Lifespan	50,000 Hours
LED Driver	Mean Well
Chipset	Seoul
Operating Temp.	-30°C ~ +65°C
Warranty	5 Year Warranty
Certifications	DLC, ETL, UL, cUL



LUMENS	LED WATTAGE	HID EQUIVALENT
72,000lm	450W	1000W



Components

DRIVER



INVENTRONICS

INVENTRONICS

LV: 100-277Vac

HV: 277-480Vac

Surge Protection: 2kV line-line, 4kV line-earth

CHIP SET



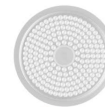
SEOUL

Lifespan: 50,000 Hours

CRI: 70

CCT: 3000K, 4000K or 5000K

LENS



Polycarbonate Lens

30°, 60°, 90°, 120°

Glass Cover

High Temperature ROBAX Glass

Mounting Options

LOOP HANGING



(STANDARD)

STAINLESS STEEL



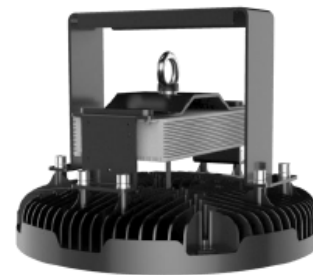
ADJUSTABLE BRACKET 16

ALUMINUM



ADJUSTABLE BRACKET 17

ALUMINUM



CEILING BRACKET

VISOR



90° ALU REFLECTOR



SAFETY CABLE



SURGE SUPPRESSOR



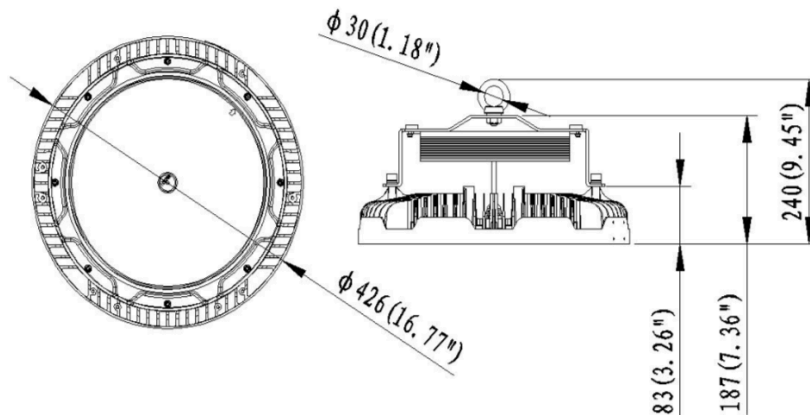


Fixture Ordering Matrix

Product Name	Wattage	Lens Degree	Input Voltage	CCT	Options
BE-HB37-01 (No Visor) Standard	450W	D30: - 30 Degree Lens D60: - 60 Degree Lens D90: - 90 Degree Lens D120: - 120 Degree Lens (Standard)	LV: - AC 100-277Vac (Standard) HV: - AC 277-480Vac	4000K 5000K (Standard)	16: - Heavy Duty Adjustable Bracket 17: - Adjustable Bracket CM: - Ceiling Mount Bracket 90 ALU: - 90° Aluminum Reflector SC: - Safety Cable SGS: - Surge Suppressor
BE-HB37-02 (Visor)					

Example: BE-HB37-01-450W-D120-LV-5000K-16-SC-SGS

Dimensions & Shipping Information



Fixture Weight:
450W - 27 lbs

Shipping Weight:
450W - 31 lbs

Box Dimensions:
470x300x495mm
(18.50"x11.81"x19.49")



Canada

Canadian Purchase Orders ship from
our Canadian warehouse located at:

1178 Bighorn Ave
Pincher Creek, AB T0K 1W0
Canada



USA

USA Purchase Orders ship from our
US warehouse located at:

910 S. Industrial Park Road
Shelby, MT 59474
USA



SUPPORT:

We sell exclusively through distributors. If you are a
manufacturing plant, we are happy to work with you and
your supplier of choice.

Our lead time on standard items is 5-7 business days.

For IES Files, lighting layouts or further questions, please
contact one of our sales representatives.