



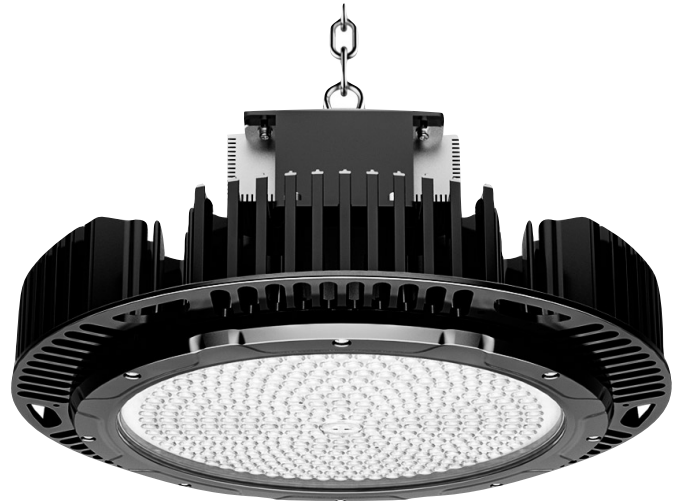
SUPERLUX

The lightweight 28 pound, SuperLux is an easy to install, single lens, 1000W equivalent light fixture for mounting up to 130 feet. With an industry-leading luminous efficacy, its high-quality lumen output and narrow beam spread creates a brighter, safer working environment.

Ideal for high ceiling high bay lighting or crane lighting where a flood light is needed.

KEY FEATURES:

- **160lm/W** - Industry Leading luminous efficacy
- **72,000/96,000** Lumen Output
- **Standard or Heavy Duty Custom Bracket**
- Optional **Visor** for mast lighting
- Directional beam spread **maximizes foot candles**
- **Single Lens**, 28 lbs Replacement for 1000W
- Designed for **high ceiling** applications **60' to 130'+**



INVENTRONICS



SPECIFICATIONS

| | |
|-------------------|--|
| Luminous Efficacy | 160lm/W |
| CCT | 4000K, 5000K (Standard) |
| CRI | >Ra70 |
| Beam Angle | 30°, 60°, 90°, 120° (Standard) |
| Input Voltage | 100-277 Vac (Standard) 277-480Vac, 50/60 Hz |
| IP Rating | IP65 |
| Lifespan | 50,000 Hours |
| LED Driver | Inventronics |
| Chipset | Seoul |
| Operating Temp. | -30°C ~ +65°C |
| Warranty | 5 Year Warranty |
| Certifications | DLC, ETL, UL, cUL |

| LUMENS | LED WATTAGE | HID EQUIVALENT |
|----------|-------------|----------------|
| 96,000lm | 600W | 1500W |
| 72,000lm | 450W | 1000W |

Components
DRIVER

INVENTRONICS
INVENTRONICS
LV: 100-277Vac

HV: 277-480Vac

Surge Protection: 6kV line-line, 10kV line-earth

CHIP SET

SEOUL
Lifespan: 50,000 Hours

CRI: 70

CCT: 4000K or 5000K

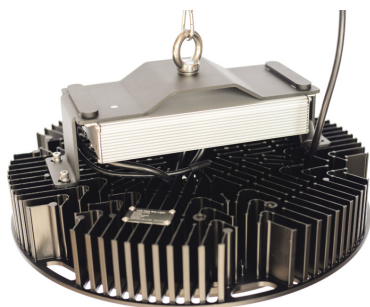
LENS


Polycarbonate Lens

30°, 60°, 90°, 120°

Glass Cover

High Temperature ROBAX Glass

Mounting Options
LOOP HANGING (Standard)

STAINLESS STEEL

ADJUSTABLE BRACKET 16
ALUMINUM

ADJUSTABLE BRACKET 17
VISOR

90° ALU REFLECTOR

SAFETY CABLE

SURGE SUPPRESSOR

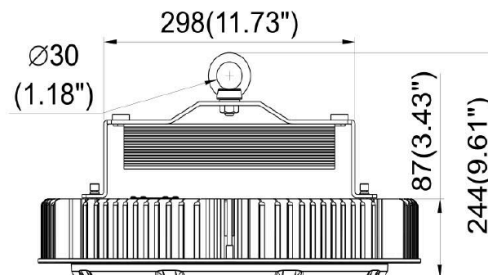
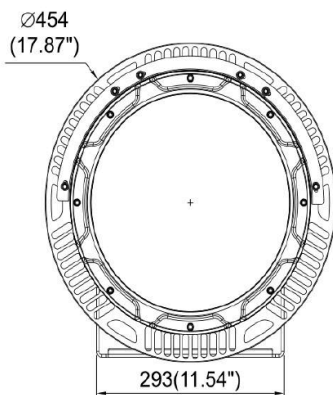



Fixture Ordering Matrix

| Product Name | Wattage | Lens Degree | Input Voltage | CCT | Options |
|---|-------------|--|--|---|---|
| BE-HB17-01 (No Visor) Standard | 450W | D30: - 30 Degree Lens D60: - 60 Degree Lens D90: - 90 Degree Lens D120: - 120 Degree Lens (Standard) | LV: - AC 100-277Vac (Standard) HV: - AC 277-480Vac | 4000K 5000K (Standard) | 16: - Heavy Duty Adjustable Bracket 17: - Adjustable Bracket 90ALU: - 90° Aluminum Reflector SC: - Safety Cable SGS: - Surge Suppressor |
| BE-HB17-02 (Visor) | 600W | | | | |

Example: BE-HB17-01-450W-D120-LV-5000K-16-SC-SGS

Dimensions & Shipping Information



Fixture Weight:

450W - 27 lbs
600W - 29 lbs

Shipping Weight:

450W - 34 lbs
600W - 36 lbs

Box Dimensions:

524x330x528mm
(20.63"x12.99"x20.79")



Canada

Canadian Purchase Orders ship from our Canadian warehouse located at:

1178 Bighorn Ave
Pincher Creek, AB T0K 1W0
Canada



USA

USA Purchase Orders ship from our US warehouse located at:

910 S. Industrial Park Road
Shelby, MT 59474
USA



SUPPORT:

We sell exclusively through distributors. If you are a manufacturing plant, we are happy to work with you and your supplier of choice.

Our lead time on standard items is 5-7 business days.

For IES Files, lighting layouts or further questions, please contact one of our sales representatives.