



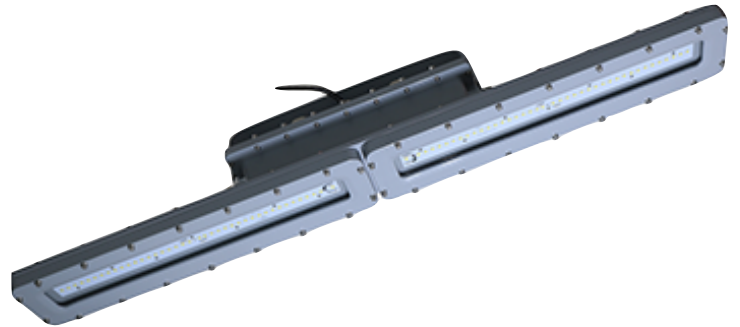
## HAZARDOUS H-SERIES

The H-Series fixture withstands explosion and fire hazards, as well as flammable gases and vapours. This hazardous location LED light has CIDII, CIIDI, CIIDII, and CIII classification ratings.

Ideal for hazardous environments, petrochemical complexes, painting facilities, offshore platforms, oil and gas complexes, and more.

### KEY FEATURES:

- CIDII Groups A, B, C, D
- CIIDI Groups E, F, F
- CIIDII Groups E, F, G
- CIII
- Various Mounting Options
- MeanWell Driver
- Linear Hazardous Fixture



### SPECIFICATIONS

<b>Luminous Efficacy</b>	140lm/W
<b>CCT</b>	3000K, 4000K, 5000K (Standard)
<b>CRI</b>	>70
<b>Input Voltage</b>	100-277Vac / 200-480Vac
<b>IP Rating</b>	IP66
<b>Temp. Rating</b>	-40°C ~ +50°C
<b>Warranty</b>	5 Years
<b>Certifications</b>	DLC, UL, cUL

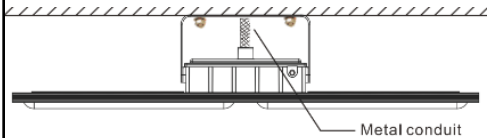
**Classifications**  
CIDII Groups A, B, C, D  
CIIDI Groups E, F, G  
CIIDII Groups E, F, G  
CIII

LUMENS	WATTAGE	EQUIVALENT
8,400lm	60W	150W
5,600lm	40W	100W
2,800lm	20W	50W



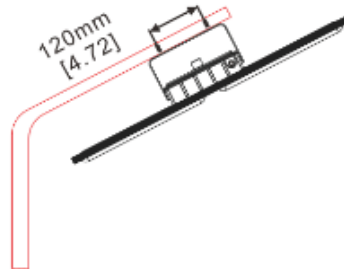
**Mounting Options**

**CEILING MOUNT (CM)**

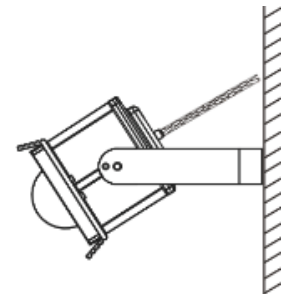


Metal conduit

**PENDANT MOUNT (PM)**



**WALL MOUNT (WM)**



**Fixture Ordering Matrix**

Product Name	Wattage	Input Voltage	CCT	Options
BE-EXP-H	20W (2FT)	LV: - 120-277Vac HV: - 200-480Vac	3000K	<b>CM:</b> - Ceiling Mount <b>PM:</b> - Pendant Bracket Mount <b>WM:</b> - Wall Mount <b>SC:</b> - Safety Cable <b>SGS:</b> - Surge Suppressor
	40W (4FT)		4000K	
	60W (4FT)		5000K (Standard)	

**Example: BE-EXP-H-20W-LV-5000K-CM**

**Dimensions & Shipping Information**

		<p><b>20W (2FT)</b> Weight: 12 lbs 691x413x290 mm</p>
		<p><b>40W, 60W (4FT)</b> Weight: 28 lbs 1300x400x295 mm</p>

**Canada**

Canadian Purchase Orders ship from our Canadian warehouse located at:

1178 Bighorn Ave  
Pincher Creek, AB T0K 1W0  
Canada

**USA**

USA Purchase Orders ship from our US warehouse located at:

910 S. Industrial Park Road  
Shelby, MT 59474  
USA

**SUPPORT:**

**We sell exclusively through distributors.** If you are a manufacturing plant, we are happy to work with you and your supplier of choice.

Our lead time on standard items is 5-7 business days.

For IES Files, lighting layouts or further questions, please contact one of our sales representatives.