



EXP-1319C

The 1319C fixture withstands extreme temperatures, explosion and fire hazards, as well as flammable gases and vapours. This linear driverless LED fixture can withstand temperatures up to 100°C with CID2 and CIID2 classification ratings.

Ideal for high heat environments, petrochemical complexes, painting facilities, offshore platforms, oil and gas complexes, and more.

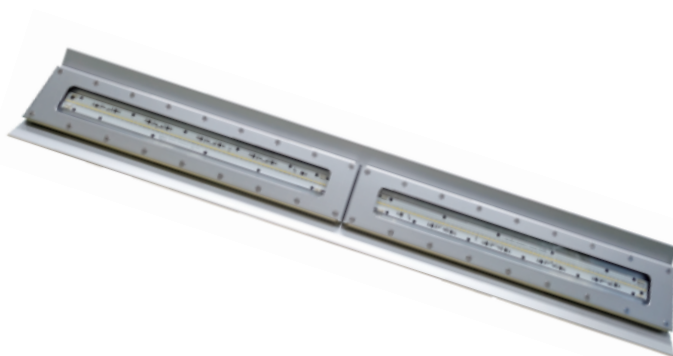
KEY FEATURES:

- **CID2 Group A, B, C, D**
- **CIID2 Group F, G**
- Temperature Rating of **-40°C ~ +100°C**
- **6KV Surge Protection Built-In**
- Various **Mounting Options**
- **Driverless Hazardous LED**
- Lifespan of **60,000 Hours**



SPECIFICATIONS

| | |
|-------------------|-----------------------------------------------------------------------------------------------|
| Luminous Efficacy | 120lm/W |
| CCT | 3000K, 5000K (Standard) |
| CRI | >Ra70 (5000K), Ra80 (3000K) |
| Beam Angle | >110° |
| Input Voltage | 120V / 277V 347V / 480V (4FT-80W) |
| IP Rating | IP67 |
| Lifespan | 60,000 Hours |
| Operating Temp. | -40°C up to +100°C (Depending on Wattage) |
| Dimensions | 2FT or 4FT |
| Warranty | 65°C and Below - 5 Year Warranty 65°-85°C - 2 Year Warranty 86°-100°C - 1 Year Warranty |
| Certifications | UL, cUL |
| Classifications | CID2 Group A, B, C, D CIID2 Group F, G |



| LUMENS | WATTAGE | EQUIVALENT |
|----------|---------|------------|
| 14,180lm | 120W | 400W |
| 9,414lm | 80W | 200W |
| 6,688lm | 60W | 150W |
| 4,833lm | 40W | 120W |

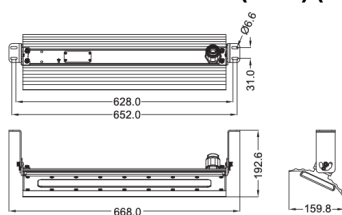


RUGGED PRODUCTS
FLEXIBLE - INNOVATIVE - SUSTAINABLE

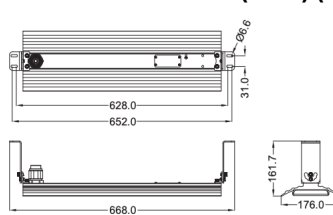
BE-EXP-1319C

Mounting Options

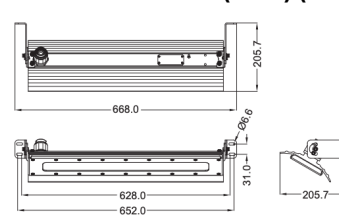
25° HANGING MOUNT (WHT) (2FT)



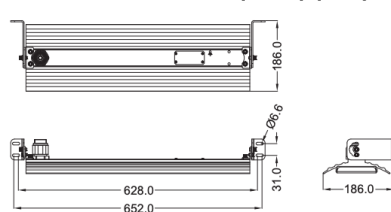
90° HANGING MOUNT (WHT) (2FT)



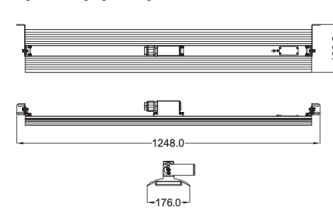
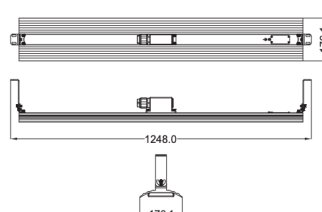
25° WALL MOUNT (WHT) (2FT)



90° WALL MOUNT (WHT) (2FT)



WALL/HANGING MOUNT (WHT) (4FT)

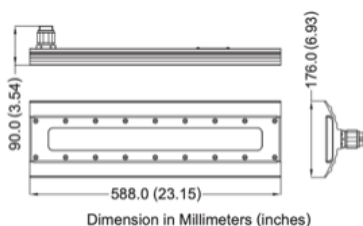


Fixture Ordering Matrix

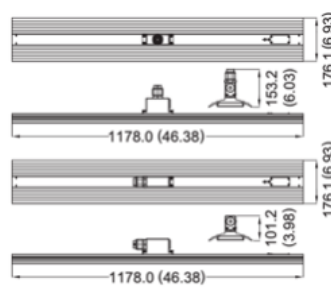
| Product Name | Size | Wattage | Input Voltage | CCT | Classification | Options |
|--------------|------|---------|-----------------|------------------------------|----------------|-----------------------------------------------------------------------------------------------------------------------------|
| BE-EXP-1319C | 2FT | 40W | 120V | 3000K 5000K (Standard) | CID2 / CIID2 | WHT: - Adjustable Wall/Hanging Mount SC: - Safety Cable SGS: - Surge Suppressor |
| | | 60W | 277V | | | |
| | 4FT | 40W | 120V | | | |
| | | 80W | 277V | | | |
| | | 120W | 347V (80W Only) | | | |
| | | | 480V (80W Only) | | | |

Example: BE-EXP-1319C-2FT-40W-120V-CID2-5000K-WHT

Dimensions & Shipping Information



Dimension in Millimeters (inches)



Dimension in Millimeters (inches)

Fixture Weight:

2FT - 12.1 lbs
4FT - 29.3 lbs

Bracket Weight:

2FT - 12.8 lbs
4FT - 30.8 lbs



Canada

Canadian Purchase Orders ship from our Canadian warehouse located at:

1178 Bighorn Ave
Pincher Creek, AB T0K 1W0
Canada



USA

USA Purchase Orders ship from our US warehouse located at:

910 S. Industrial Park Road
Shelby, MT 59474
USA



SUPPORT:

We sell exclusively through distributors. If you are a manufacturing plant, we are happy to work with you and your supplier of choice.

Our lead time on standard items is 5-7 business days.

For IES Files, lighting layouts or further questions, please contact one of our sales representatives.