



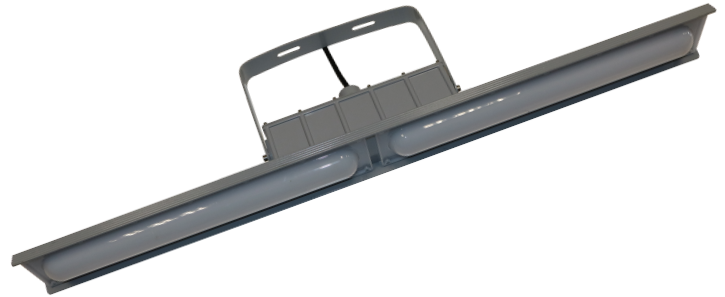
HAZARDOUS H-SERIES

The H-Series fixture withstands explosion and fire hazards, as well as flammable gases and vapours. This hazardous location LED light has CID2, CIID1, CIID2, and CIII classification ratings.

Ideal for hazardous environments, petrochemical complexes, painting facilities, offshore platforms, oil and gas complexes, and more.

KEY FEATURES:

- CID2 Groups A, B, C, D
- CIID1 Groups E, F, F
- CIID2 Groups F, G
- CIII
- Various **Mounting Options**
- **MeanWell Driver**
- **Linear** Hazardous Fixture



SPECIFICATIONS

Luminous Efficacy	140lm/W
CCT	3000K, 4000K, 5000K (Standard)
CRI	>Ra 70
Input Voltage	LV: 100-277Vac HV: 200-480Vac
IP Rating	IP66
Temp. Rating	-40°C ~ +60°C
L70 Lifespan	>50,000 Hours
Warranty	5 Year Warranty
Certifications	UL 1598A, cUL

Classifications

CID2 Groups A, B, C, D
CIID1 Groups E, F, G
CIID2 Groups E, F, G
CIII

LUMENS	WATTAGE	EQUIVALENT
8,400lm	60W	150W
5,600lm	40W	100W
2,800lm	20W	50W

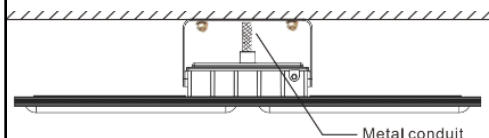


RUGGED PRODUCTS
FLEXIBLE - INNOVATIVE - SUSTAINABLE

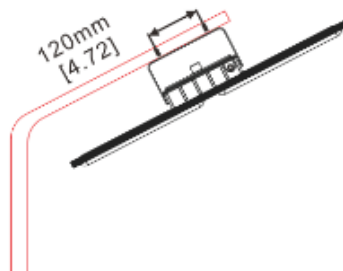
BE-EXP-H

Mounting Options

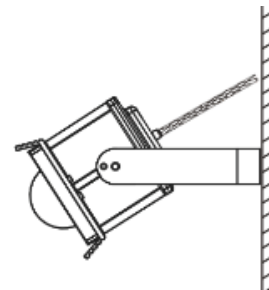
CEILING MOUNT (CM) (STANDARD)



PENDANT MOUNT (PM)



WALL MOUNT (WM) STANDARD

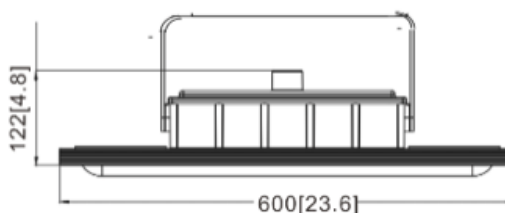
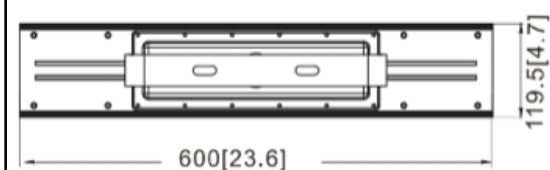


Fixture Ordering Matrix

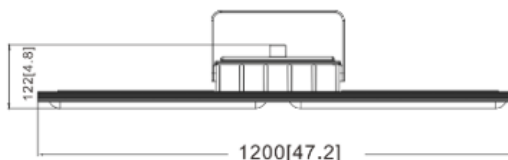
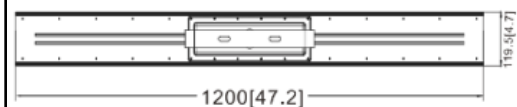
Product Name	Wattage	Input Voltage	CCT	Classification	Options
BE-EXP-H	20W (2FT)	LV: - 120-277Vac (Standard) HV: - 200-480Vac	3000K	CID2 / CIID1 / CIID2 / CIII	CM: - Ceiling Mount (Standard) PM: - Pendant Bracket Mount (Special Order) WM: - Wall Mount (Standard) SC: - Safety Cable SGS: - Surge Suppressor
	40W (4FT)		4000K		
	60W (4FT)		5000K (Standard)		

Example: BE-EXP-H-20W-LV-5000K-CID2-CM

Dimensions & Shipping Information



20W (2FT)
Weight: 12 lbs
691x413x290 mm



40W, 60W (4FT)
Weight: 28 lbs
1300x400x295 mm



Canada

Canadian Purchase Orders ship from our Canadian warehouse located at:

1178 Bighorn Ave
Pincher Creek, AB T0K 1W0
Canada



USA

USA Purchase Orders ship from our US warehouse located at:

910 S. Industrial Park Road
Shelby, MT 59474
USA



SUPPORT:

We sell exclusively through distributors. If you are a manufacturing plant, we are happy to work with you and your supplier of choice.

Our lead time on standard items is 5-7 business days.

For IES Files, lighting layouts or further questions, please contact one of our sales representatives.