



RUGGED PRODUCTS
FLEXIBLE - INNOVATIVE - SUSTAINABLE

BE-EXP-1319C

EXP-1319C

The 1319C fixture withstands extreme temperatures, explosion and fire hazards, as well as flammable gases and vapours. This linear driverless LED fixture can withstand temperatures up to 100°C with CID2 and CIID2 classification ratings.

Ideal for high heat environments, petrochemical complexes, painting facilities, offshore platforms, oil and gas complexes, and more.

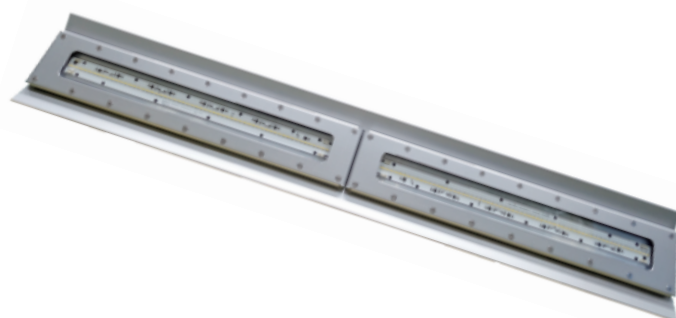
KEY FEATURES:

- CID2 Group A, B, C, D
- CIID2 Group F, G
- Temperature Rating of -40°C ~ +100°C
- 6KV Surge Protection Built-In
- Various Mounting Options
- Driverless Hazardous LED
- Lifespan of 60,000 Hours



SPECIFICATIONS

Luminous Efficacy	120lm/W
CCT	3000K, 5000K (Standard)
CRI	>Ra70 (5000K), Ra80 (3000K)
Beam Angle	>110°
Input Voltage	120V / 277V 347V / 480V (4FT-80W)
IP Rating	IP67
Lifespan	60,000 Hours
Operating Temp.	-40°C up to +100°C (40W) -40°C up to +85°C (60W & 80W-120-277V) -40°C up to +65°C (80W-347-480V & 120W)
Dimensions	2FT or 4FT
Warranty	65°C and Below - 5 Year Warranty 65°-85°C - 2 Year Warranty 86°-100°C - 1 Year Warranty
Certifications	UL, cUL
Classifications	CID2 Group A, B, C, D / CIID2 Group F, G



LUMENS	WATTAGE	EQUIVALENT
14,180lm	120W	400W
9,414lm	80W	200W
6,688lm	60W	150W
4,833lm	40W	120W

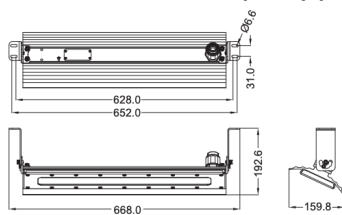


RUGGED PRODUCTS
FLEXIBLE - INNOVATIVE - SUSTAINABLE

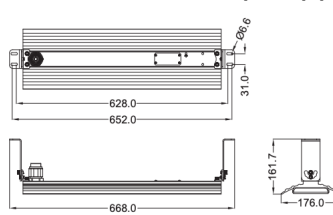
BE-EXP-1319C

Mounting Options

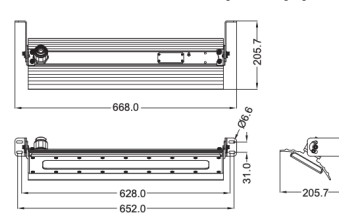
25° HANGING MOUNT (WHT) (2FT)



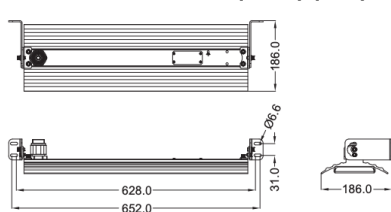
90° HANGING MOUNT (WHT) (2FT)



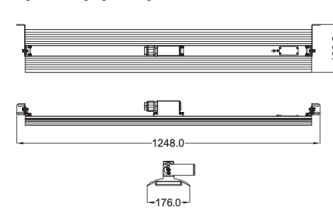
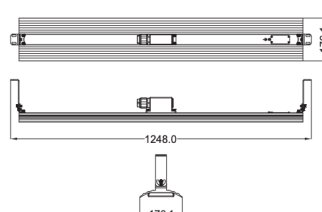
25° WALL MOUNT (WHT) (2FT)



90° WALL MOUNT (WHT) (2FT)



WALL/HANGING MOUNT (WHT) (4FT)

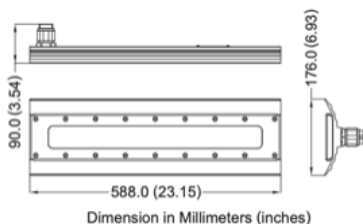


Fixture Ordering Matrix

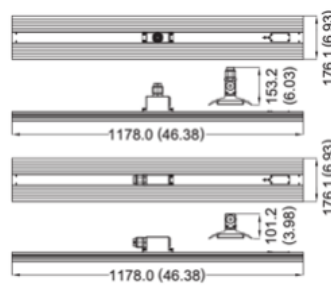
Product Name	Size	Wattage	Input Voltage	CCT	Classification	Options
BE-EXP-1319C	2FT	40W	120V	3000K 5000K (Standard)	CID2 / CIID2	WHT -Adjustable Wall/Hanging Mount SC -Safety Cable SGS -Surge Suppressor
		60W	277V			
	4FT	40W	120V			
		80W	277V			
		347V (80W Only)				
		120W	480V (80W Only)			

Example: BE-EXP-1319C-2FT-40W-120V-CID2-5000K-WHT

Dimensions & Shipping Information



Dimension in Millimeters (inches)



Dimension in Millimeters (inches)

Fixture Weight:

2FT - 12.1 lbs
4FT - 29.3 lbs

Bracket Weight:

2FT - 12.8 lbs
4FT - 30.8 lbs



Canada

Canadian Purchase Orders ship from our Canadian warehouse located at:

1178 Bighorn Ave
Pincher Creek, AB T0K 1W0
Canada



USA

USA Purchase Orders ship from our US warehouse located at:

910 S. Industrial Park Road
Shelby, MT 59474
USA



SUPPORT:

We sell exclusively through distributors. If you are a manufacturing plant, we are happy to work with you and your supplier of choice.

Our lead time on standard items is 5-7 business days.

For IES Files, lighting layouts or further questions, please contact one of our sales representatives.