

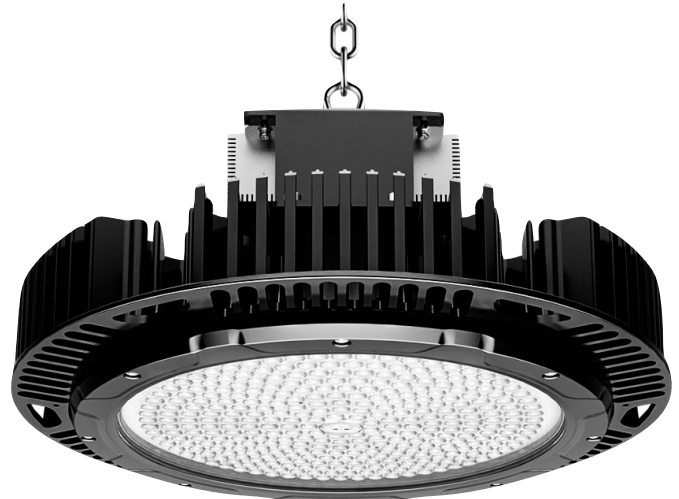
## SUPERLUX

The lightweight 28 pound, SuperLux is an easy to install, single lens, 1500W equivalent light fixture for mounting up to 130 feet. With an industry-leading luminous efficacy, its high-quality lumen output and narrow beam spread creates a brighter, safer working environment.

Ideal for high ceiling high bay lighting or crane lighting where a flood light is needed.

### KEY FEATURES:

- **160lm/W** - Industry Leading Luminous Efficacy
- **96,000** Lumen Output
- **Standard or Heavy Duty Custom Bracket**
- Optional **Visor** for Mast Lighting
- Directional Beam Spread **Maximizes Foot Candles**
- **+65°C** Temperature Rating
- **Single Lens**, 28 lbs Replacement for 1500W
- Designed for **High Ceiling** Applications **60' to 130'+**



### SPECIFICATIONS

Luminous Efficacy	160lm/W
CCT	4000K, 5000K (Standard)
CRI	>Ra70
Beam Angle	15°, 30°, 60°, 90°, 120° (Standard)
Input Voltage	LV: 100-277 Vac (127-300 Vdc) (Standard) HV: 277-480 Vac (352-500 Vdc) 600V: 600Vac
IP Rating	IP66
L70 Lifespan	66,000 Hours @ 50°
LED Driver	Inventronics (100-277V & 277-480V) Powerland (600Vac)
Chipset	Seoul
Dimmable	Non-Dimmable & 0-10V Dimmable
Operating Temp.	-30°C ~ +65°C
Warranty	5 Year Warranty
Certifications	DLC, ETL, UL, cUL



LUMENS	LED WATTAGE	HID EQUIVALENT
96,000lm	600W	1500W

**Components**

**DRIVER**



**INVENTRONICS**

**INVENTRONICS**

**LV:** 100-277Vac

**HV:** 277-480Vac



**Powerland**

**HV:** 600Vac

**CHIP SET**



**SEOUL**

**L70 Lifespan:** 66,000 Hours @ 50°C

**CRI:** 70

**CCT:** 4000K or 5000K

**LENS**



**Polycarbonate Lens**

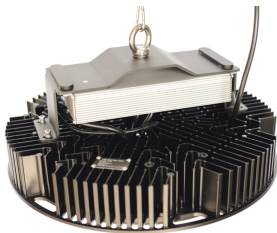
**15°, 30°, 60°, 90°, 120°**

**Glass Cover**

**High Temperature 120° ROBAX Glass**

**Mounting Options**

**LOOP HANGING**



**STANDARD**

**BRACKET 16**



**STAINLESS STEEL  
ADJUSTABLE**

**BRACKET 17**



**ALUMINUM  
ADJUSTABLE**

**BRACKET 18**



**STAINLESS STEEL  
CRANE BRACKET**

**BRACKET 19**

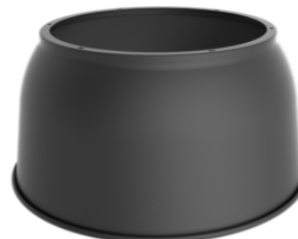


**OVERHEAD CRANE BRACKET**

**VISOR**



**90° ALU REFLECTOR**



**HOOK**



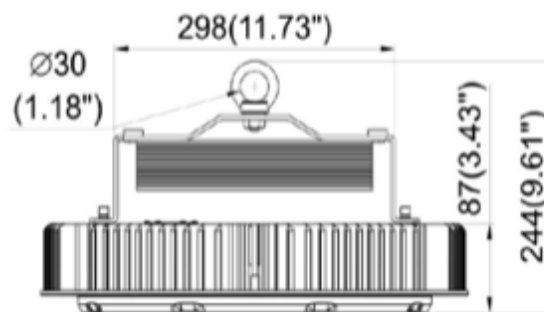
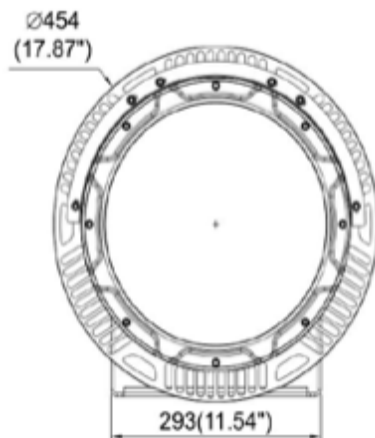
**(LV ONLY)**

**Fixture Ordering Matrix**

Product Name	Wattage	Lens Degree	Input Voltage	CCT	Options
BE-HB17	600W	<b>D15</b> (Special Order) <b>D30</b> <b>D60</b> <b>D90</b> <b>D120</b> (Standard) <b>D120HT</b> (120° ROBAX)	<b>LV</b> AC 100-277 Vac (127-300 Vdc) (Standard)  <b>HV</b> AC 277-480Vac (352-500 Vdc)  <b>600V</b> AC 600Vac	<b>4000K</b>  <b>5000K</b> (Standard)	<b>16</b> Heavy Duty Adjustable Bracket <b>17</b> Adjustable Bracket <b>18</b> Adjustable Crane Bracket <b>19</b> Overhead Crane Bracket <b>VISOR</b> Visor <b>90ALU</b> 90° Aluminum Reflector <b>HOOK</b> Hook (LV Only) <b>SC</b> Safety Cable <b>SGS</b> Surge Suppressor

**Example: BE-HB17-600W-D120-LV-5000K-16-SC-SGS**

**Dimensions & Shipping Information**



**Fixture Weight:** 29 lbs

**Shipping Weight:** 36 lbs

**Box Dimensions:**  
 524x330x528mm  
 (20.63"x12.99"x20.79")



Canadian Purchase Orders ship from our Canadian warehouse located at:

1178 Bighorn Ave  
 Pincher Creek, AB T0K 1W0  
 Canada



USA Purchase Orders ship from our US warehouse located at:

910 S. Industrial Park Road  
 Shelby, MT 59474  
 USA



**We sell exclusively through distributors.** If you are a manufacturing plant, we are happy to work with you and your supplier of choice.

Our lead time on standard items is 5-7 business days.

For IES Files, lighting layouts or further questions, please contact one of our sales representatives.