



SUPERLUX 2

The low-profile, lightweight, SuperLux 2 is an easy to install, single lens, 1000W equivalent light fixture for mounting up to 130 feet. With an industry-leading luminous efficacy, its high-quality lumen output and narrow beam spread creates a brighter, safer working environment.

Ideal for high ceiling high bay lighting or crane lighting where a flood light is needed.

KEY FEATURES:

- **Low Profile** High Bay
- **160lm/W** - Industry Leading Luminous Efficacy
- **72,000** Lumen Output
- **Standard or Heavy Duty Custom Bracket**
- Optional **Visor** for Mast Lighting
- Directional Beam Spread **Maximizes Foot Candles**
- **Single Lens**, 28 lb Replacement for 1000W
- Designed for **High Ceiling** Applications **60' to 130'+**



SPECIFICATIONS

Luminous Efficacy	160lm/W
CCT	3000K, 4000K, 5000K (Standard)
CRI	>Ra70
Beam Angle	15°, 30°, 60°, 90°, 120° (Standard)
Input Voltage	LV: 100-277 Vac (127-300 Vdc) (Standard) HV: 277-480Vac (352-500 Vdc) 600V: 600 Vac
IP Rating	IP66
L70 Lifespan	100,000 Hours @ 50°C
LED Driver	Inventronics (LV & HV) Powerland (600V)
Chipset	Seoul
Dimmable	Non-Dimmable & 0-10V Dimmable
Operating Temp.	-30°C ~ +65°C
Warranty	5 Year Warranty
Certifications	DLC, ETL, UL, cUL



LUMENS	LED WATTAGE	HID EQUIVALENT
72,000lm	450W	1000W

Components
DRIVER

INVENTRONICS
INVENTRONICS
LV: 100-277Vac (127-300 Vdc)

HV: 277-480Vac (352-500 Vdc)

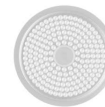
POWERLAND
Powerland
HV: 600Vac

CHIP SET

SEOUL
L70 Lifespan: 100,000 Hours @ 50°C

CRI: 70

CCT: 3000K, 4000K or 5000K

LENS

Polycarbonate Lens
15°, 30°, 60°, 90°, 120°
Glass Cover
High Temperature ROBAX Glass
Mounting Options
LOOP HANGING

(STANDARD)
VISOR

90° ALU REFLECTOR

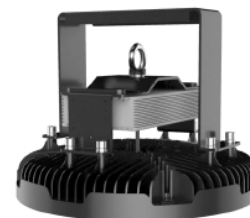
HOOK

(LV ONLY)
BRACKET 16

**STAINLESS STEEL
ADJUSTABLE**
BRACKET 17

**ALUMINUM
ADJUSTABLE**
BRACKET 18

**STAINLESS STEEL
CRANE BRACKET**
BRACKET 19

**OVERHEAD CRANE
BRACKET**
BRACKET 23

**ALUMINUM CEILING
MOUNT**

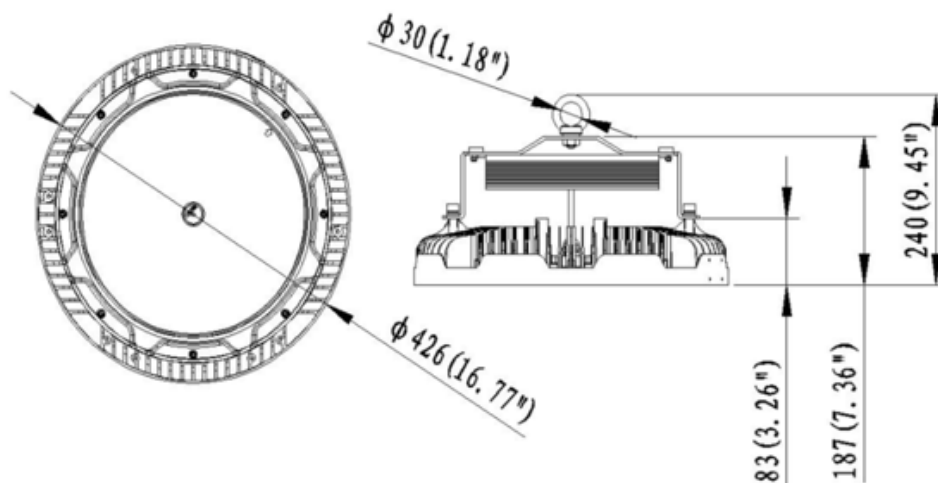


Fixture Ordering Matrix

Product Name	Wattage	Lens Degree	Input Voltage	CCT	Options
BE-SL2 (HB37)	450W	D15 (Special Order) D30 D60 D90 D120 (Standard) D120HT (120° ROBAX)	LV AC 100-277 Vac (127-300 Vdc) (Standard) HV AC 277-480 Vac (352-500 Vdc) 600V AC 600Vac	4000K 5000K (Standard)	16 Heavy Duty Adjustable Bracket 17 Adjustable Bracket 18 Stainless Steel Crane bracket 19 Overhead Crane Bracket 23 Ceiling Mount Bracket VISOR Visor 90 ALU 90° Aluminum Reflector HOOK Hook (LV Only) SC Safety Cable SGS Surge Suppressor

Example: BE-SL2-450W-D120-LV-5000K-16-SC-SGS

Dimensions & Shipping Information



Fixture Weight:

450W - 27 lbs

Shipping Weight:

450W - 31 lbs

Box Dimensions:

470x300x495mm
(18.50"x11.81"x19.49")



Canada

Canadian Purchase Orders ship from our Canadian warehouse located at:

1178 Bighorn Ave
Pincher Creek, AB T0K 1W0
Canada



USA

USA Purchase Orders ship from our US warehouse located at:

910 S. Industrial Park Road
Shelby, MT 59474
USA



SUPPORT:

We sell exclusively through distributors. If you are a manufacturing plant, we are happy to work with you and your supplier of choice.

Our lead time on standard items is 5-7 business days.

For IES Files, lighting layouts or further questions, please contact one of our sales representatives.