



**RUGGED PRODUCTS**  
FLEXIBLE - INNOVATIVE - SUSTAINABLE

## BE-EXP-1217E

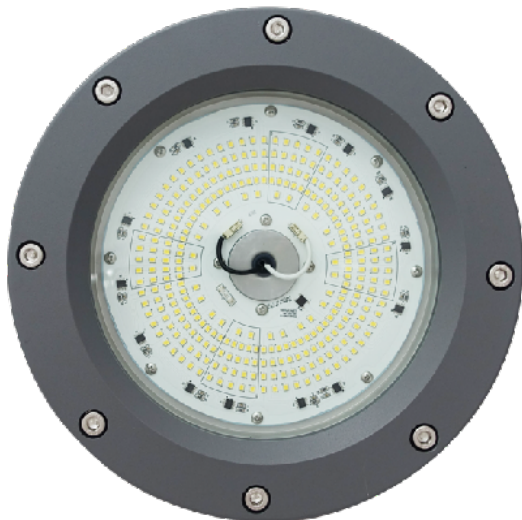
### EXP-1217E

The 1217E fixture withstands extreme temperatures, explosion and fire hazards, as well as flammable gases and vapours. This driverless LED fixture can withstand temperatures up to 85°C with CID1/CIID1 and CID2 classification ratings.

Ideal for high heat environments, petrochemical complexes, painting facilities, offshore platforms, oil and gas complexes, and more.

#### KEY FEATURES:

- CID1 Group B, C, D
- CIID1 Group E, F, G
- CID2 Group A, B, C, D
- Temperature Rating of -40°C ~ +85°C
- 6KV Surge Protection Built-In
- Various Mounting Options
- Driverless Hazardous LED
- Lifespan of 60,000 Hours



#### SPECIFICATIONS

Luminous Efficacy	100lm/W
CCT	3000K, 5000K (Standard)
CRI	>Ra80
Beam Angle	>110°
Input Voltage	120V / 277V
IP Rating	IP68
Lifespan	60,000 Hours
Entry Thread	Female NPT 3/4" - Straight Electrical Tube
Operating Temp.	-40°C up to +85°C (120W) -40°C up to +65°C (150W)
Warranty	65°C and Below - 5 Year Warranty 65°-85°C - 2 Year Warranty
Certifications	UL, cUL
Classifications	CID1 Group B, C, D / CIID1 Group E, F, G CID2 Group A, B, C, D

LUMENS	WATTAGE	EQUIVALENT
15,000lm	150W	600W
12,000lm	120W	400W

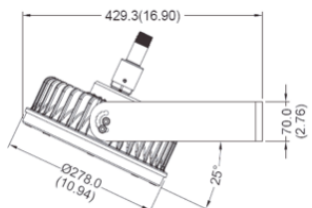


**RUGGED PRODUCTS**  
FLEXIBLE - INNOVATIVE - SUSTAINABLE

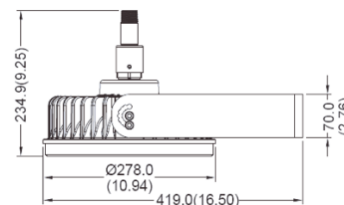
**BE-EXP-1217E**

### Mounting Options

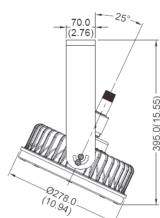
#### 25° WALL MOUNT (WHT)



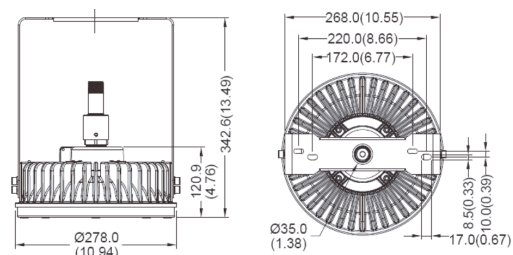
#### 90° WALL MOUNT (WHT)



#### 25° HANGING MOUNT (WHT)



#### 90° HANGING MOUNT (WHT)

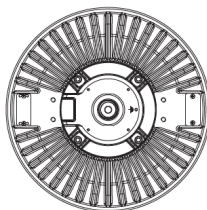
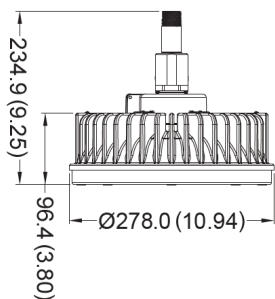


### Fixture Ordering Matrix

Product Name	Wattage	Input Voltage	CCT	Classification	Options
BE-EXP-1217E	120W	120V	3000K	CID1 / CIID1	WHT Adjustable Wall/Hanging Mount
	150W	277V	5000K (Standard)	CID2	SC Safety Cable SGS Surge Suppressor

**Example: BE-EXP-1217E-120W-120V-5000K-CID1-WHT-SC-SGS**

### Dimensions & Shipping Information



**Fixture Weight: 24 lbs**

**Weight w/Bracket: 27 lbs**



**Canada**

Canadian Purchase Orders ship from our Canadian warehouse located at:

1178 Bighorn Ave  
Pincher Creek, AB T0K 1W0  
Canada



**USA**

USA Purchase Orders ship from our US warehouse located at:

910 S. Industrial Park Road  
Shelby, MT 59474  
USA



**SUPPORT:**

**We sell exclusively through distributors.** If you are a manufacturing plant, we are happy to work with you and your supplier of choice.

Our lead time on standard items is 5-7 business days.

For IES Files, lighting layouts or further questions, please contact one of our sales representatives.