

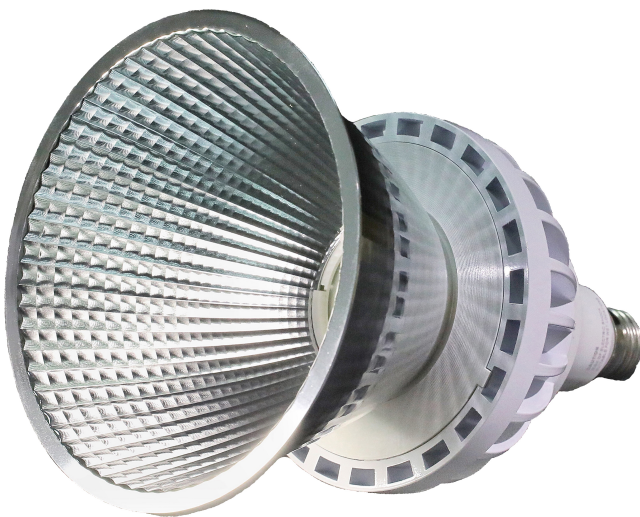
INDUSTRIAL LED HIGH-TEMP BULB

The HH38 is an industrial-grade LED bulb that can be installed into a traditional lighting fixture with an E26 or E39 socket. It is rated IP66 for outdoor/wet locations.

This high-temp LED bulb can be used in extremely cold environments (-95°C) as well as high temperature areas with a temperature rating up to +105°C.

KEY FEATURES:

- **AC Direct Driven Circuit** (No Capacitor)
- **IP66 Waterproof** (Outdoor/Wet Location)
- **-95°C up to 105°C** (-130°F up to 222°F)
- **Easy Maintenance**
- **E26 Socket** (E39 Adapter)
- **Tempered Glass** for High Temperature Environments
- **Thermal Insulation Body**
- **45° Reflector Included**



SPECIFICATIONS

Wattage	55W
Lumens	5,000 lm
Luminous Efficacy	90lm/W
CCT	5000K
CRI	70
Beam Angle	110° (Bulb Only)
Input Voltage	120-277Vac
IP Rating	IP66
Operating Temp.	-95°C up to 105°C (-130°F up to 222°F)
Nominal Lifetime	30,000 hours
Base	E26 / E39 Adapter
Reflectors	45°
Included	E39 Adapter & 45° Reflector
Warranty	2 Year Warranty

BEAM ANGLE OPTIONS

**110°
(STANDARD)**



**45° REFLECTOR
(STANDARD)**

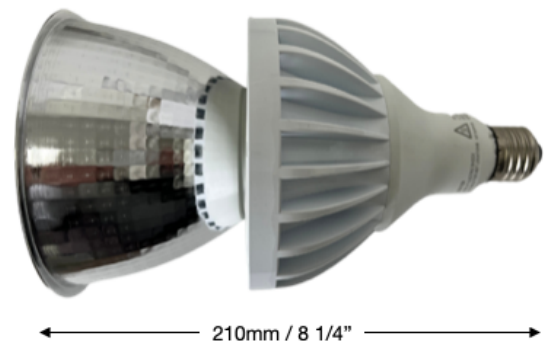
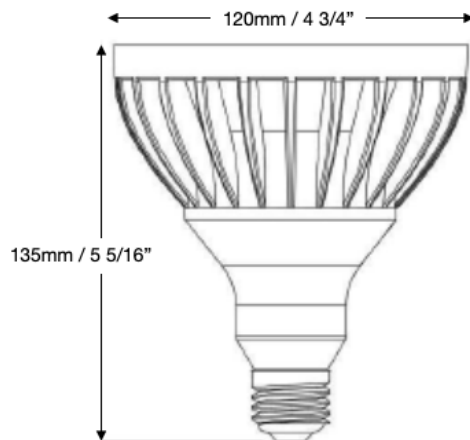


FIXTURE ORDERING MATRIX

Product Name	Wattage	Lens Degree
BE-HH38	55W	D110 110° / 45° Reflector (Standard)

Example: BE-HH38-55W-D110

DIMENSIONS



Canada

Canadian Purchase Orders ship from our Canadian warehouse located at:

1178 Bighorn Ave
Pincher Creek, AB T0K 1W0
Canada



USA

USA Purchase Orders ship from our US warehouse located at:

910 S. Industrial Park Road
Shelby, MT 59474
USA



SUPPORT:

We sell exclusively through distributors. If you are a manufacturing plant, we are happy to work with you and your supplier of choice.

Our lead time on standard items is 5-7 business days.

For IES Files, lighting layouts or further questions, please contact one of our sales representatives.