



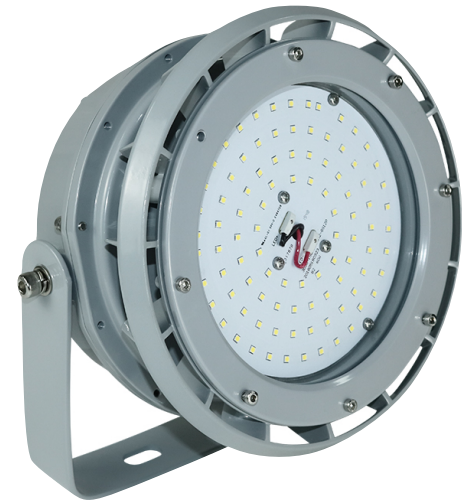
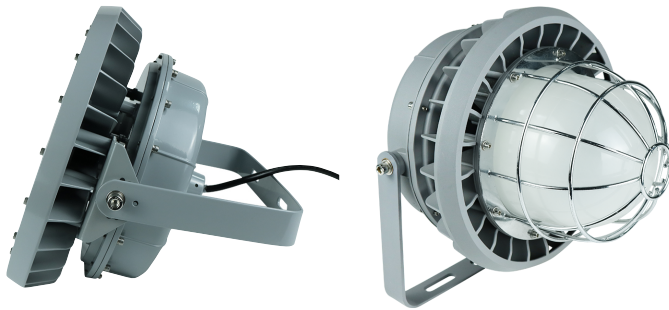
HAZARDOUS B-SERIES

The B-Series fixture withstands explosion and fire hazards, as well as flammable gases and vapours. This hazardous location LED light has CID2, CIID1, CIID2, and CIII classification ratings.

Ideal for hazardous environments, petrochemical complexes, painting facilities, offshore platforms, oil and gas complexes, and more.

KEY FEATURES:

- CID2 Group A, B, C, D
- CIID1 Group E, F, G
- CIID2 Group F, G
- CIII
- Various **Mounting Options**
- **MeanWell Driver**
- Up to **28,000 Lumens**



SPECIFICATIONS

Luminous Efficacy	140lm/W
CCT	3000K, 4000K, 5000K (Standard)
CRI	>70
Input Voltage	LV: 100-277Vac HV: 200-480Vac
IP Rating	IP66
Temp. Rating	-40°C ~ +55°C
L70 Lifespan	>50,000 Hours
Warranty	5 Year Warranty
Certifications	UL 1598A, cUL, DLC 5.1 Standard
Classifications	CID2 Group A, B, C, D CIID1 Group E, F, G CIID2 Group F, G CIII

LUMENS	WATTAGE
56,000lm	400W
42,000lm	300W
35,000lm	250W
28,000lm	200W
21,000lm	150W
14,000lm	100W
11,200lm	80W
8,400lm	60W
5,600lm	40W

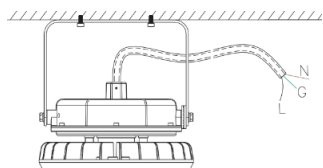


RUGGED PRODUCTS
FLEXIBLE - INNOVATIVE - SUSTAINABLE

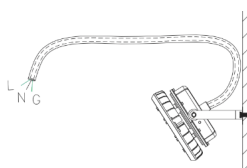
BE-EXP-B

MOUNTING OPTIONS

CEILING MOUNT (CM) (STANDARD)



WALL MOUNT (WM) (STANDARD)



SPHERICAL GLASS (C)

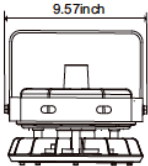

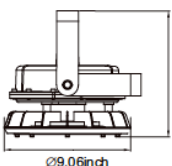
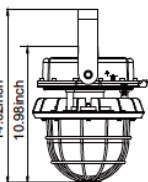
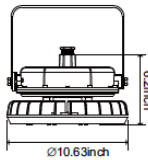
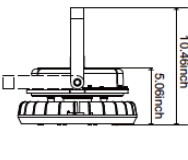
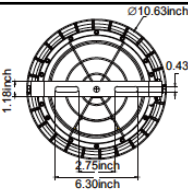
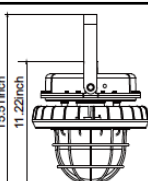
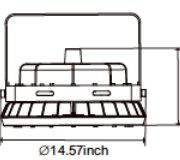
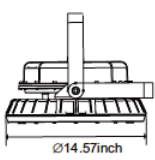
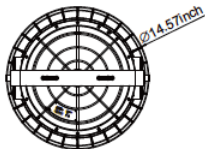
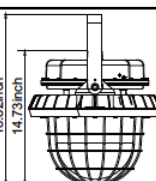

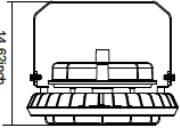


FIXTURE ORDERING MATRIX

Product Name	Wattage	Input Voltage	CCT	Classification	Options
BE-EXP-B	40W 60W 80W 100W 150W 200W 250W 300W 400W	LV 120-277Vac (Standard) HV 200-480Vac	3000K 4000K 5000K (Standard)	CID2 / CID1 / CID2 / CII	CM Ceiling Mount (Standard) WM Wall Mount (Standard) C Spherical Glass (Special Order)

Example: BE-EXP-B-40W-LV-5000K-CID2-CM

DIMENSIONS & SHIPPING INFORMATION

 9.57inch	 6.70inch	 8.99inch 4.00inch Ø9.06inch	 14.02inch 10.98inch	40W Weight: 12 lbs 14.17x13.94x10.24"
 6.2inch Ø10.63inch	 5.06inch 10.46inch	 Ø10.63inch 0.43inch 2.75inch 6.30inch	 15.51inch 11.22inch	60W & 80W Weight: 17.5 lbs 15.19x12.99x8.66"
 7.76inch Ø14.57inch	 Ø14.57inch	 Ø14.57inch	 18.82inch 14.73inch	100W, 150W, & 200W Weight: 23 lbs 18.90x18.11x10.43"
 Ø18.9inch	 14.62inch			250W, 300W & 400W Weight: 47 lbs 20.87x20.87x11.81"



Canada

Canadian Purchase Orders ship from our Canadian warehouse located at:

1178 Bighorn Ave
Pincher Creek, AB T0K 1W0
Canada



USA

USA Purchase Orders ship from our US warehouse located at:

910 S. Industrial Park Road
Shelby, MT 59474
USA



SUPPORT:

We sell exclusively through distributors. If you are a manufacturing plant, we are happy to work with you and your supplier of choice.

Our lead time on standard items is 5-7 business days.

For IES Files, lighting layouts or further questions, please contact one of our sales representatives.