



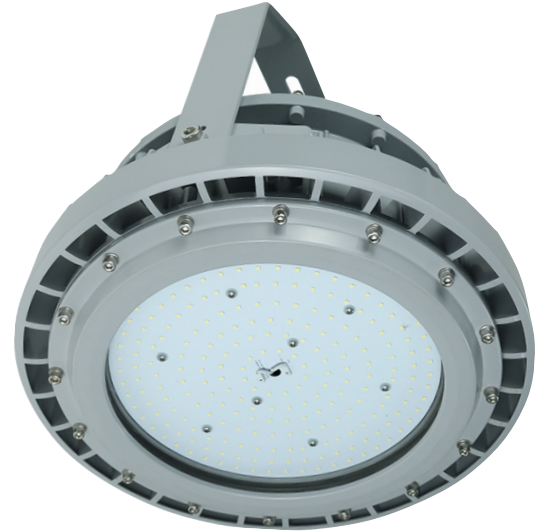
HAZARDOUS C-SERIES

The C-Series fixture withstands explosion and fire hazards, as well as flammable gases and vapours. This hazardous location LED light has a CID1, CID2, CIID1, CIID2, and CIII classification ratings.

Ideal for hazardous environments, petrochemical complexes, painting facilities, offshore platforms, oil and gas complexes, and more.

KEY FEATURES:

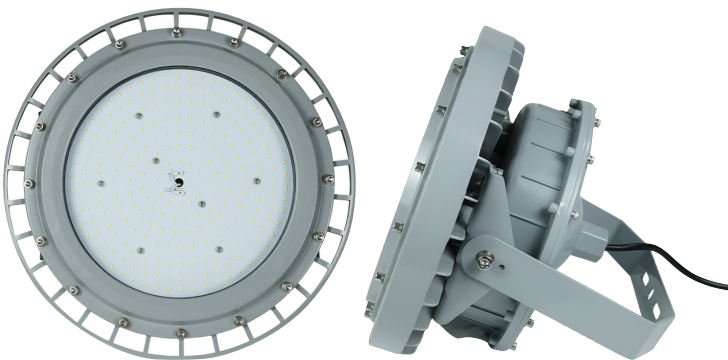
- CID1 Groups C, D
- CID2 Groups A, B, C, D
- CIID1 Groups E, F, G
- CIID2 Groups E, F, G
- CIII
- Various **Mounting Options**
- **MeanWell Driver**
- Up to **28,000 Lumens**



SPECIFICATIONS

Luminous Efficacy	140lm/W
CCT	3000K, 4000K, 5000K (Standard)
CRI	>Ra 70
Input Voltage	LV: 100-277Vac HV: 200-480Vac
IP Rating	IP66
Temp. Rating	-40°C ~ +60°C
L70 Lifespan	>50,000 Hours
Warranty	5 Years
Certifications	UL 1598A, cUL, DLC 5.1 Standard

Classifications	CID1 Groups C, D CID2 Groups A, B, C, D CIID1 Groups E, F, G CIID2 Groups E, F, G CIII
-----------------	--

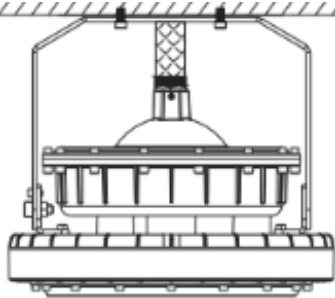


LUMENS	WATTAGE
35,000lm	250W
21,000lm	150W
14,000lm	100W
11,200lm	80W
8,400lm	60W

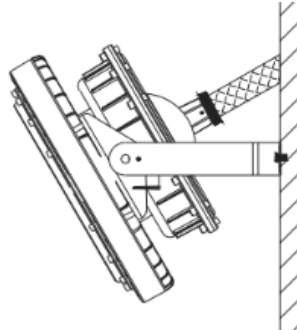


Mounting Options

CEILING MOUNT (CM) (STANDARD)



WALL MOUNT (WM) (STANDARD)



SPHERICAL GLASS (C)

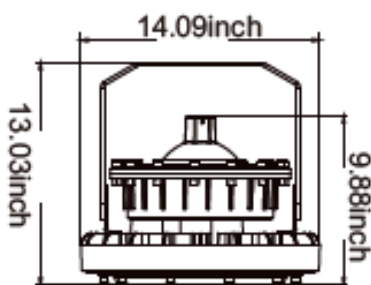


Fixture Ordering Matrix

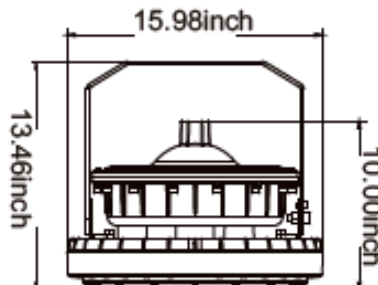
Product Name	Wattage	Input Voltage	CCT	Classification	Options
BE-EXP-C	60W	LV 120-277Vac (Standard)	3000K	CID1 / CID2 / CIID1 / CIID2 / CIII	CM Ceiling Mount (Standard) WM Wall Mount (Standard) C Spherical Glass (Special Order)
	80W		4000K		
	100W		5000K (Standard)		
	150W	HV 200-480Vac			
	250W				

Example: BE-EXP-C-60W-LV-5000K-CID1-CM

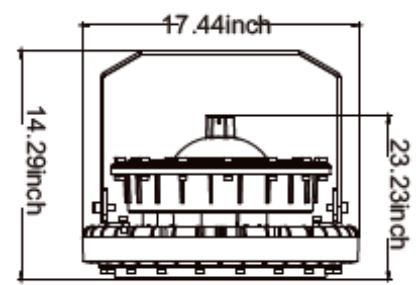
Dimensions & Shipping Information



60W & 80W
Weight: 35 lbs
470x470x345 mm



100W & 150W
Weight: 42 lbs
550x520x360 mm



250W
Weight: 55 lbs
555x555x345 mm



Canada

Canadian Purchase Orders ship from our Canadian warehouse located at:

1178 Bighorn Ave
Pincher Creek, AB T0K 1W0
Canada



USA

USA Purchase Orders ship from our US warehouse located at:

910 S. Industrial Park Road
Shelby, MT 59474
USA



SUPPORT:

We sell exclusively through distributors. If you are a manufacturing plant, we are happy to work with you and your supplier of choice.

Our lead time on standard items is 5-7 business days.

For IES Files, lighting layouts or further questions, please contact one of our sales representatives.