

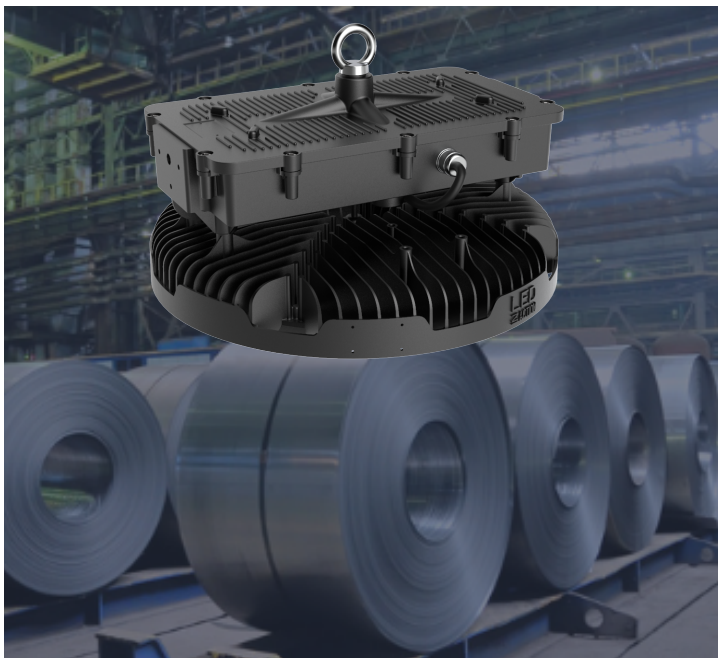
## SUPERLUX 2

The low-profile, lightweight, SuperLux 2 is an easy to install, single lens, 1000W equivalent light fixture for mounting up to 130 feet. With an industry-leading luminous efficacy, its high-quality lumen output and narrow beam spread creates a brighter, safer working environment.

Ideal for high ceiling high bay lighting or crane lighting where a flood light is needed.

### KEY FEATURES:

- **Low Profile** High Bay
- **160lm/W** - Industry Leading Luminous Efficacy
- **72,000** Lumen Output
- **Standard or Heavy Duty Custom Bracket**
- Optional **Visor** for Mast Lighting
- Directional Beam Spread **Maximizes Foot Candles**
- **Single Lens**, 28 lb Replacement for 1000W
- Designed for **High Ceiling** Applications **60' to 130'+**



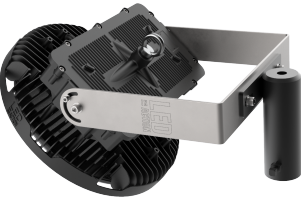

### SPECIFICATIONS

Luminous Efficacy	160lm/W
CCT	3000K, 4000K, 5000K (Standard)
CRI	>Ra70
Beam Angle	15°, 30°, 60°, 90°, 120° (Standard)
Input Voltage	LV: 100-277 Vac (250 Vdc) (Standard) HV: 277-480Vac SHV: 600 Vac
IP Rating	IP66
L70 Lifespan	100,000 Hours @ 50°C
LED Driver	Inventronics (LV & HV) Powerland (600V)
Chipset	Seoul
Dimmable	Non-Dimmable & 0-10V Dimmable
Operating Temp.	-30°C ~ +65°C
Warranty	5 Year Warranty
Certifications	DLC, ETL, UL, cUL

LUMENS	LED WATTAGE	HID EQUIVALENT
72,000lm	450W	1000W



**MOUNTING OPTIONS**

<p><b>HIGH BAY LIGHT</b></p>  <p><b>LOOP HANGING (STANDARD)</b></p>	<p><b>AREA/FLOOD LIGHT</b></p>  <p><b>BRACKET 24</b></p>	<p><b>MAST LIGHT</b></p>  <p><b>BRACKET 24 + BRACKET 07 (SLIP FITTER)</b></p>	<p><b>CRANE LIGHT</b></p>  <p><b>BRACKET 24</b></p>
<p><b>CRANE BRACKET</b></p>  <p><b>BRACKET 19 + BRACKET 24</b></p>	<p><b>HOOK</b></p>  <p><b>HOOK</b></p>	<p><b>90° ALU SHADE</b></p>  <p><b>90ALU</b></p>	<p><b>VISOR</b></p>  <p><b>VISOR</b></p>

**FIXTURE ORDERING MATRIX**

Product Name	Wattage	Lens Degree	Input Voltage	CCT	Options
BE-SL2	450W	<p>D15 (Special Order)</p> <p>D30</p> <p>D60</p> <p>D90</p> <p>D120 (Standard)</p> <p>D120HT (120° ROBAX)</p>	<p><b>LV</b> AC 100-277 Vac (250Vdc) (Standard)</p> <p><b>HV</b> AC 277-480 Vac</p> <p><b>SHV</b> AC 600Vac</p>	<p><b>4000K</b></p> <p><b>5000K</b> (Standard)</p>	<p><b>19</b> Overhead Crane Bracket</p> <p><b>24</b> Heavy Duty Adjustable Bracket</p> <p><b>HOOK</b> Hook</p> <p><b>90 ALU</b> 90° Aluminum Reflector</p> <p><b>VISOR</b> Visor</p> <p><b>SC</b> Safety Cable</p> <p><b>SGS</b> Surge Suppressor</p>

Example: BE-SL2-450W-D120-A-LV-5000K-24-SC-SGS



**Find Your Exact Part Number Using Our New Part Number Generator**

Product specs may vary depending on the exact wattage and voltage. For complete specs and pictures, visit our new part number generator, which includes new 3D drawings, spec sheets, IES files, certifications, dimensions, bracket info & more.

[www.ledinaction.com/part-number-guide](http://www.ledinaction.com/part-number-guide)