

# 2024 LED LIGHTING PRODUCT CATALOG

[www.LEDinAction.com](http://www.LEDinAction.com)



[info@ledinaction.com](mailto:info@ledinaction.com)

1-855-264-8600



**RUGGED PRODUCTS  
FOR HARSH ENVIRONMENTS**

# TRUSTED BY THE HEAVY INDUSTRIAL SECTOR

Avoid unnecessary interruptions and costly maintenance with the brightest and most durable LED fixtures on the market.



## SOME OF OUR INDUSTRIAL CUSTOMERS

STEEL	PAPER	NSF FOOD	MANUFACTURING
Overhead Cranes Industrial High Bay	Dryer Hood Lights High-Temp Lights (212°F)	IP69K Wash-Down Light CRI93 Sun-Quality Light	Up to 96,000 Lumens Explosion-Proof Fixtures

## DISTRIBUTION PARTNERS

Proud Member of the National Association of Electrical Distributors



# TABLE OF CONTENTS

## ABOUT US



CUSTOMERS & DISTRIBUTORS .....	1
LED LIGHTING PRODUCTS.....	3
INDUSTRIES & APPLICATIONS CHART.....	5
UNIVERSAL LED LIGHTING .....	6
FREQUENTLY ASKED QUESTIONS (FAQS) .....	7
MOUNTING HEIGHT CHART .....	9
HIGH-TEMPERATURE APPLICATIONS CHART .....	10
600 VOLT LED FIXTURE .....	40
LOCAL SALES REPRESENTATIVES.....	41
PILOT PROJECT PROGRAM .....	42

## SPEC SHEETS

### INDUSTRIAL LIGHTING

96,000 LUMENS - 600W .....	11
72,000 LUMENS - 450W .....	13
14,000-45,000 LUMENS - 100W-300W .....	15
7,000-12,600 LUMENS - 50W-90W .....	17
LINEAR HIGH BAY .....	19
INDUSTRIAL FLOOD LIGHTING .....	21

### NSF FOOD PROCESSING LIGHTING

FOOD PROCESSING LIGHT.....	23
LINEAR FOOD PROCESSING LIGHT .....	25

### HIGH TEMPERATURE & HAZARDOUS LOCATION LIGHTING

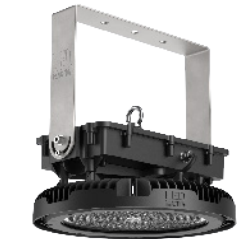
1319C - CID2 .....	27
HH03 - CID2 .....	29
HH38 - HIGH TEMP BULB .....	38

### HAZARDOUS LOCATION LIGHTING

EXP-FL23 - CID2/CIID1/CIID2/CIII - FLOOD LIGHT.....	31
EXP-RD05 - CID2/CIID1/CIID2/CIII - ROUND .....	33
EXP-LN06 - CID2/CIID2/CIII - LINEAR .....	35

### MISC. & WORK LIGHTING

INDUSTRIAL WALL PACK .....	37
RECHARGEABLE WORK LIGHT.....	39



# LED LIGHTING PRODUCTS

## INDUSTRIAL LIGHTING



**96,000 LUMENS**  
1500W Equivalent  
600W  
LV, HV, 600V

*Page 11*



**72,000 LUMENS**  
1000W Equivalent  
450W  
LV, HV, 600V

*Page 13*



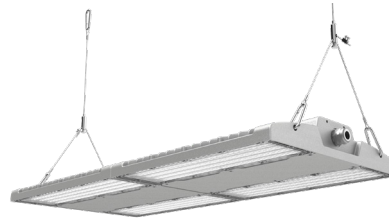
**14,000 - 45,000 LUMENS**  
Custom Heavy Duty Brackets  
100W - 300W  
LV, HV, 600V

*Page 15*



**7,000 - 12,600 LUMENS**  
Custom Heavy Duty Brackets  
50W - 90W  
LV

*Page 17*



**LINEAR HIGH BAY**  
Linear Lighting  
56,000 Lumen Output  
Smart Control Options

*Page 19*



**INDUSTRIAL FLOOD LIGHT**  
-30°C to +50°C  
45,000 Lumen Output  
Loop-In & Loop-Out Cable

*Page 21*

## NSF FOOD LIGHTING



**FOOD PROCESSING LIGHT**  
IP69K Washdown Fixture  
CRI 93 High Colour Rendering  
Shatterproof, Corrosion Resistant

*Page 23*



**LINEAR FOOD LIGHT**  
IP69K Washdown Fixture  
CRI 90 For Inspection Zones  
Streamlined Body Design

*Page 25*



**EXP-1319C**  
CID2  
-40°C ~ +100°C  
14,400 Lumens

*Page 27*



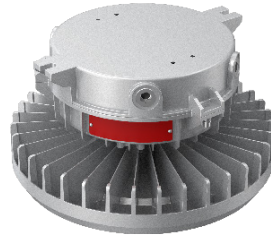
**HH03**  
CID1/CID2  
-40°C ~ +100°C  
8,000 Lumens

*Page 29*



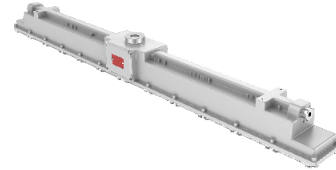
**EXP-FL23**  
CID2/CIID1/CIID2/CIID3  
Flood Light  
36,000 Lumens

*Page 31*



**EXP-RD05**  
CID2/CIID1/CIID2/CIID3  
Round  
33,600 Lumens

*Page 33*



**EXP-LN06**  
CID2/CIID2/CIID3  
Linear  
15,000 Lumens

*Page 35*



**WALL PACK**  
100-277Vac  
-40°C up to +40°C  
15,000 Lumens

*Page 37*



**HIGH HEAT BULB**  
Industrial-Grade Bulb  
-95°C up to 105°C  
(-130°F up to +222°F)

*Page 38*



**RC-01 WORK LIGHT**  
Rechargeable Work Light  
Magnetic Base  
Power Charging Bank

*Page 39*

**HIGH TEMP & HAZARDOUS LIGHTING**

**WORK LIGHT**

# INDUSTRIES & APPLICATIONS

## HEAVY INDUSTRIAL - FABRICATION - MANUFACTURING - STEEL - MINING



### Overhead Cranes

- Heavy Vibration
- Voltage Spikes
- Under Crane Shadows



CHB

### 1000W Equivalent

- 25 lbs
- -30°C to +65°C
- Low & High Voltage Input



### High Ceilings

- Poor Lighting at Working Plane
- Costly Maintenance
- Depreciating Lights



SuperLux

### 96,000 Lumens

- 130 Foot Ceiling
- Adjustable Bracket Options
- -30°C to +65°C

## PAPER MILLS - GLASS FACTORIES - OIL & GAS - REFINERIES - POWER PLANTS



### High Temperature

- Hot Mills
- Furnace Rooms
- Dryer Hoods/Cooling Beds



HH03

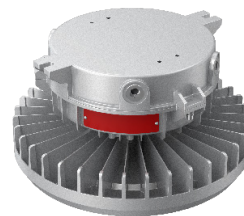
### 100°C Temp Rating

- Driverless LED
- -40°C to +100°C
- IP67 Rating



### Hazardous Locations

- Extreme Temperatures
- Explosion & Fire Hazards
- Flammable Gasses/Vapours



EXP-RD05

### C1D1 Rating

- Explosion Proof Fixture
- Multiple Class Ratings
- IP68 Rating

## FOOD PROCESSING - PHARMACEUTICALS



### NSF Food Grade

- Inspection Areas
- Wash Down Zones
- Freezers



Food Processing Light

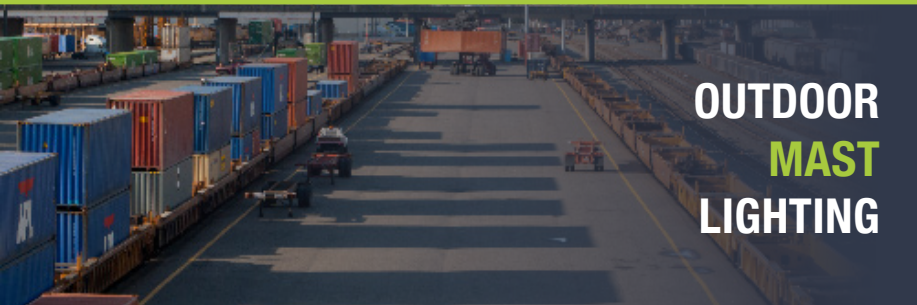
### IP69K & CRI93

- Meets Food Safety Requirements
- Prevents Bacteria Build-Up
- A Lifespan of 100,000+ Hours

# STANDARDIZE YOUR INDUSTRIAL LIGHTING ONE LIGHT DOES IT ALL



**INDUSTRIAL  
HIGH BAY  
LIGHTING**



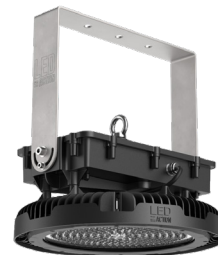
**OUTDOOR  
MAST  
LIGHTING**



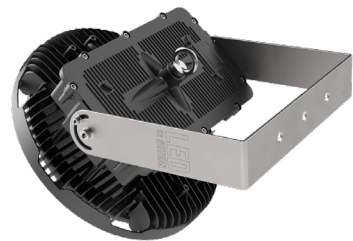
**INDOOR  
AREA  
LIGHTING**



**OVERHEAD  
CRANE  
LIGHTING**



**OUTDOOR  
FLOOD  
LIGHTING**



## Universal LED Lighting

Swap out the bracket in less than 60 seconds!  
7,000 - 96,000 Lumens  
100-277Vac, 277-480Vac, 600Vac

## FREQUENTLY ASKED QUESTIONS

**THROUGH PARTNERSHIPS WITH PEOPLE, WE CREATE INNOVATIVE AND RUGGED LIGHTING SOLUTIONS BUILT TO LAST.**

### HOW LONG HAVE WE BEEN IN BUSINESS?

Since 2008, LED in Action has provided customizable solutions in the industrial market for some of the toughest environments in North America. The experience gained by providing solutions to the heavy industrial sectors has elevated LED in Action to be a trustworthy partner. Our rugged products are currently distributed through most national distributors, as well as local distributors throughout Canada and the United States.

### WHERE ARE WE LOCATED?

Our head office and shipping facilities are located in Pincher Creek, Alberta, Canada. We have a stocking and shipping facility in Shelby, Montana, USA. Our sales team is located throughout both Canada and the United States. We manufacture and assemble our products in China and Taiwan.

### DO WE OFFER A WARRANTY?

Our fixtures have a high success rate that is proven to last in some of the world's harshest environments. For this reason, we are confident in standing behind our fixtures and offer one of the best warranties in the industry. Our lighting fixtures come with a standard completely hassle-free 5-year unlimited warranty.



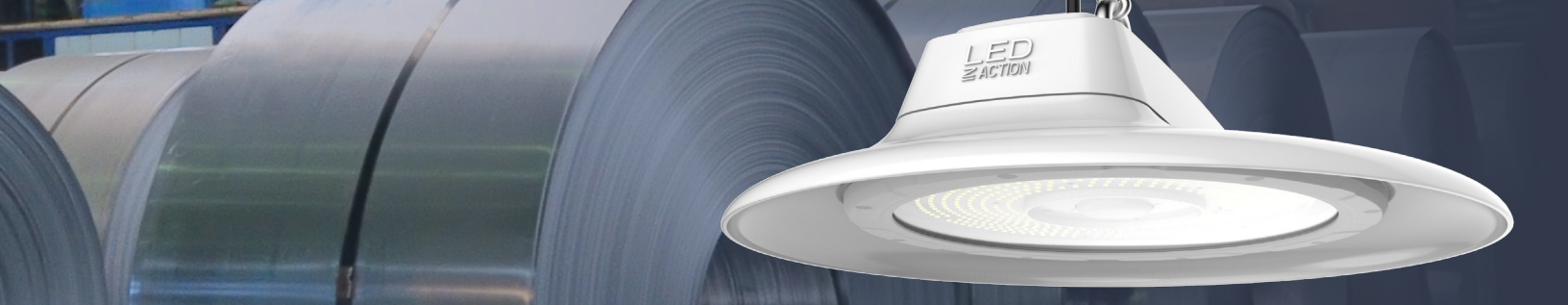
### WHAT INDUSTRIES DO WE SERVE?

For the past 15 years, our company has been providing industrial LED lighting solutions for harsh environments found in heavy industrial industries such as steel making, mining, oil & gas, paper, power plants, glass factories, and many other manufacturing facilities.

### WHAT APPLICATIONS DO WE PROVIDE LIGHTING FOR?

Our lighting has proven to last and outperform in unique applications. Our lights can be found in high-temperature applications (hot mills, furnace rooms, dryer hoods, and cooling beds), overhead travelling cranes (heavy vibration and voltage spikes), food-grade applications (inspection zones and washdown zones), high ceilings (60 feet, 100 feet, and 150 feet), and hazardous locations where explosion-proof products are necessary.





## WHAT'S UNIQUE ABOUT OUR LED LIGHTING?

The secret to long-lasting LED lighting is in the quality of the components within the fixtures. Our LED light fixtures have less than a 1% failure rate. They perform successfully 99% of the time. We only source the best quality components from top brands around the world. We use Meanwell drivers and Nichia LED chips while offering upgrades such as ROBAX glass (up to 760°C temperature rating), heavy-duty custom-made bracket options, surge suppressors, and safety cables. Quality components ensure long-lasting products and a quicker return on investment for our customers.



## HOW CAN YOU BUY OUR PRODUCTS?

We sell our products through electrical distribution branches. If you are a manufacturing plant, we are happy to work with you and your supplier of choice to find the best LED lighting solution for your application. If you're a distributor, there's a good chance you already have our vendor information in your system either under *LED in Action* or *Back To Earth Energy, Inc.* We value our distribution partners and price protect any deal brought to us.

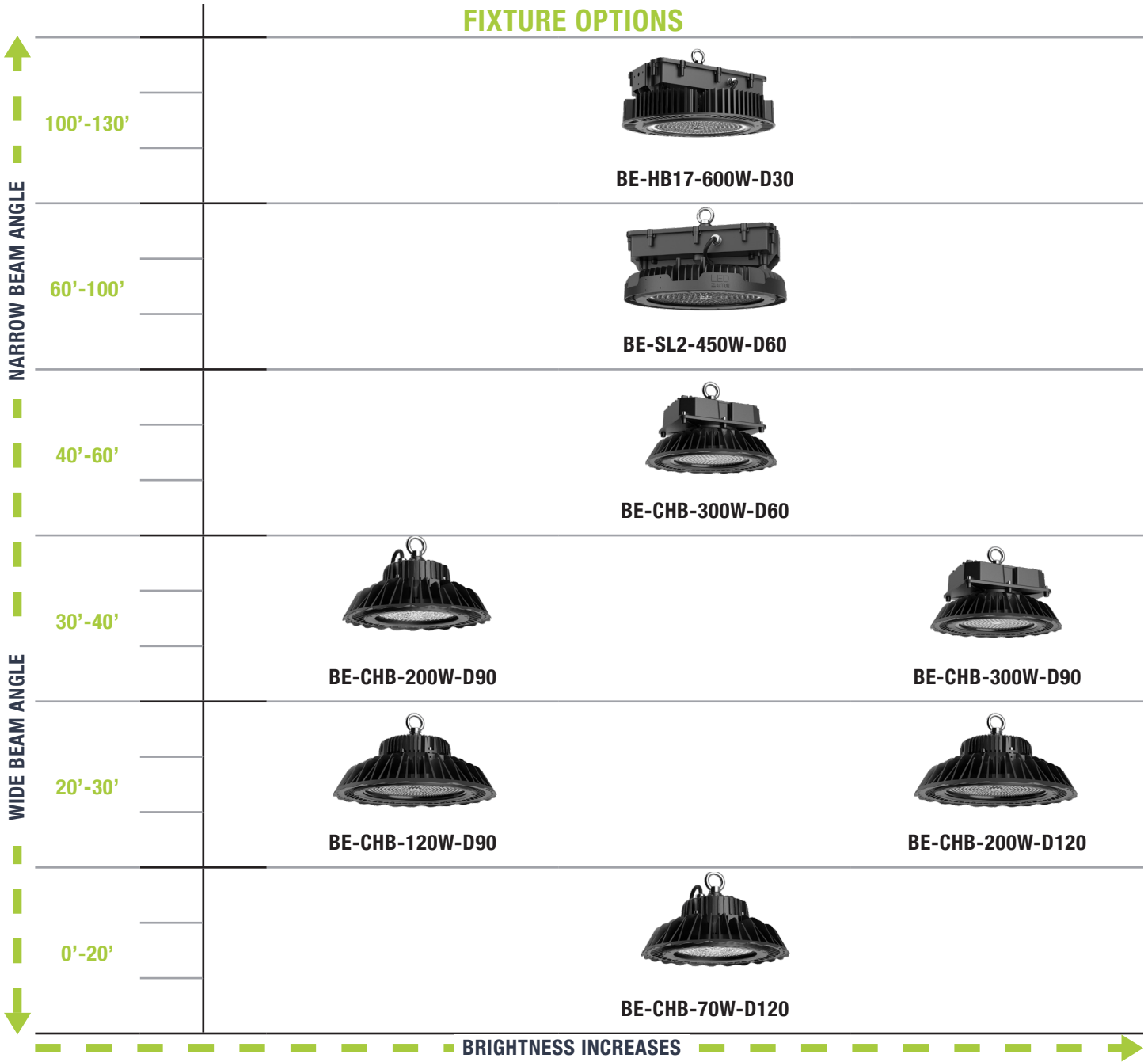


**OUR LED LIGHTING FIXTURES**

**OTHER LIGHTING FIXTURES**

# MOUNTING HEIGHT CHART

## FIXTURE OPTIONS



## KEY FEATURES



**BE-HB17  
SuperLux**

Nichia LED Chip Set  
Inventronics Driver  
100-277V/277-480V  
1500W Equivalent  
5 Year Warranty



**BE-SL2  
SuperLux 2**

Nichia LED Chip Set  
Inventronics Driver  
100-277V/277-480V  
1000W Equivalent  
5 Year Warranty



**BE-CHB  
CHB HIGH BAY**

Nichia LED Chip Set  
MeanWell Driver  
100-277V/277-480V  
1000W Equivalent  
5 Year Warranty



**BE-CHB  
CHB HIGH BAY**




Nichia LED Chip Set  
MeanWell Driver  
100-277V/277-480V  
800W Equivalent  
5 Year Warranty

# HIGH TEMPERATURE APPLICATIONS CHART

## AMBIENT TEMPERATURE: CONSTANT HIGH TEMPERATURE



Temperature Ratings Only Apply To Specific Wattage

↑ TEMPERATURE INCREASES	100°C 212°F	 <b>BE-EXP-1319C-2FT-40W-CID2</b>	 <b>BE-HH03-60W-CID2</b> 86°C-100°C - 1 Year Warranty	 <b>BE-EXP-1319C-40W-4FT-CID2</b>
	85°C 185°F	 <b>BE-EXP-1319C-2FT-60W-CID2</b>	 <b>BE-HH03-80W-CID2</b> 66°C-85°C - 2 Year Warranty	 <b>BE-EXP-1319C-4FT-80W-CID2</b>
	65°C 149°F	 <b>BE-CHB-300W</b>	 <b>BE-SL2-450W</b> 65°C & Below - 5 Year Warranty	

--- WATTAGE INCREASES →

## TEMPERATURE BLASTS: SHORT BURSTS OF HIGH TEMPERATURE



### ROBAX

#### 120 Degree ROBAX Lens



#### Remote Mount Driver

- Extreme Temperature Upgrade for CHB & SuperLux
- Heat-Resistant Glass Ceramic Lens Up to **760°C**
- Not Affected by Substantial Temperature Shifts
- No Breakage Due to Thermal Shock or Stress

- Extreme Temperature Upgrade for CHB & SuperLux
- Remove the Power Supply & Mount at Away From The Heat Source
- Cable Length Connection Up to 350 Feet
- Remote Mount & ROBAX Lens 1-Year Warranty up to **100°C/212°F**

## KEY FEATURES



**EXP-1319C-2FT**

CID2

No Driver

40W/60W



**EXP-1319C-4FT**

CID2

No Driver

40W/80W/120W



**HH03**

CID2

No Driver

30W/40W/50W/60W/80W



**BE-SL2**

ROBAX Lens

Remote Mount

450W



**BE-CHB**

ROBAX Lens

Remote Mount

300W

# UNIVERSAL INDUSTRIAL LED LIGHT

## 96,000 LM

### SUPERLUX - BE-HB17

The lightweight 29-pound, SuperLux is an easy-to-install, single lens, 1500W equivalent light fixture for mounting up to 130 feet. With an industry-leading luminous efficacy, its high-quality lumen output and narrow beam spread creates a brighter, safer working environment.

Ideal for high ceiling high bay lighting or crane lighting where a floodlight is needed.

#### KEY FEATURES:

- **160lm/W** -Industry Leading Luminous Efficacy
- **96,000** Lumen Output
- **Standard or Heavy Duty Custom Bracket**
- Optional **Visor** for Mast Lighting
- Directional Beam Spread **Maximizes Foot Candles**
- **+65°C** Temperature Rating
- **Single Lens**, 32 lbs Replacement for 1500W
- Designed for **High Ceiling** Applications **60' to 130'+**



SPECIFICATIONS	
Luminous Efficacy	160lm/W
CCT	4000K, 5000K (Standard)
CRI	>Ra 70
Beam Angle	15°, 30°, 60°, 90°, 120° (Standard)
Input Voltage	<b>LV:</b> 100-277Vac (250Vdc) <b>HV:</b> 277-480Vac <b>SHV:</b> 600Vac
IP Rating	IP66
L70 Lifespan	>66,000 Hours @ 50°C
LED Driver	Inventronics (LV & HV) Powerland (600V)
Chipset	Seoul
Operating Temp.	-40°C ~ +65°C
Warranty	5 Year Warranty
Certifications	DLC, ETL, UL, cUL



LUMENS	LED WATTAGE	HID EQUIVALENT
96,000 lm	600W	1,500W

## MOUNTING OPTIONS

<b>HIGH BAY</b>  	<b>AREA/FLOOD LIGHT</b>  	<b>MAST LIGHT</b>  	<b>CRANE LIGHT</b>  
<b>LOOP HANGING (STANDARD)</b>	<b>BRACKET 24</b>	<b>BRACKET 24 + BRACKET 07 (SLIP FITTER)</b>	<b>BRACKET 24</b>
<b>CRANE BRACKET</b>  	<b>HOOK</b>  	<b>90° ALU SHADE</b>  	<b>VISOR</b>  
<b>BRACKET 19 + BRACKET 24</b>	<b>HOOK</b>	<b>90ALU</b>	<b>VISOR</b>

## FIXTURE ORDERING MATRIX

Product Name	Wattage	Lens Degree	Input Voltage	CCT	Options
<b>BE-HB17</b>	<b>600W</b>	<b>D15</b> (Special Order) <b>D30</b> <b>D60</b> <b>D90</b> <b>D120</b> <b>D120HT</b> (ROBAX)	<b>LV</b> 100-277Vac  <b>HV</b> AC 277-480Vac  <b>SHV</b> 600Vac	<b>4000K</b>  <b>5000K</b> (Standard)	<b>19</b> Overhead Crane Bracket <b>24</b> Heavy Duty Adjustable Bracket <b>HOOK</b> Hook <b>90ALU</b> 90° Aluminum Shade <b>VISOR</b> Visor <b>3/4 LID</b> 3/4" Stem Mount Lid <b>SC</b> Safety Cable <b>SGS</b> Surge Suppressor

**Example: BE-HB17-600W-D120-LV-5000K-16-SC-SGS**



### FIND YOUR EXACT PART NUMBER USING OUR NEW PART NUMBER GENERATOR

Product specs may vary depending on the exact wattage and voltage. For complete specs and pictures, visit our new part number generator, which includes new 3D drawings, spec sheets, IES files, certifications, dimensions, bracket info & more.

[www.ledinaction.com/part-number-guide/](http://www.ledinaction.com/part-number-guide/)

# UNIVERSAL INDUSTRIAL LED LIGHT

## 72,000 LM

### SUPERLUX 2 - BE-SL2

The low-profile, lightweight, SuperLux 2 is an easy-to-install, single lens, 1000W equivalent light fixture for mounting up to 130 feet. With an industry-leading luminous efficacy, its high-quality lumen output and narrow beam spread creates a brighter, safer working environment.

Ideal for high ceiling high bay lighting or crane lighting where a floodlight is needed.

#### KEY FEATURES:

- **Low Profile** High Bay
- **160lm/W** Industry Leading Luminous Efficacy
- **72,000** Lumen Output
- **Standard or Heavy Duty Custom Bracket**
- Optional **Visor** for Mast Lighting
- Directional Beam Spread **Maximizes Foot Candles**
- **Single Lens**, 28 lbs Replacement for 1000W
- Designed for **High Ceiling** Applications **60' to 130'+**



#### SPECIFICATIONS

<b>Luminous Efficacy</b>	160lm/W
<b>CCT</b>	3000K, 4000K, 5000K (Standard)
<b>CRI</b>	>Ra 70
<b>Beam Angle</b>	15°, 30°, 60°, 90°, 120° (Standard)
<b>Input Voltage</b>	<b>LV:</b> 100-277Vac (250Vdc) <b>HV:</b> 277-480Vac <b>SHV:</b> 600Vac
<b>IP Rating</b>	IP66
<b>L70 Lifespan</b>	>100,000 Hours @ 50°C
<b>LED Driver</b>	Inventronics (LV & HV) Powerland (600V)
<b>Chipset</b>	Seoul
<b>Operating Temp.</b>	-40°C ~ +65°C
<b>Warranty</b>	5 Year Warranty
<b>Certifications</b>	DLC, ETL, UL, cUL

LUMENS	LED WATTAGE	HID EQUIVALENT
72,000 lm	450W	1000W

## MOUNTING OPTIONS

<b>HIGH BAY</b>  <b>LOOP HANGING (STANDARD)</b>	<b>AREA/FLOOD LIGHT</b>  <b>BRACKET 24</b>	<b>MAST LIGHT</b>  <b>BRACKET 24 + BRACKET 07 (SLIP FITTER)</b>	<b>CRANE LIGHT</b>  <b>BRACKET 24</b>
<b>CRANE BRACKET</b>  <b>BRACKET 19 + BRACKET 24</b>	<b>HOOK</b>  <b>HOOK</b>	<b>90° ALU SHADE</b>  <b>90ALU</b>	<b>VISOR</b>  <b>VISOR</b>

## FIXTURE ORDERING MATRIX

Product Name	Wattage	Lens Degree	Input Voltage	CCT	Options
<b>BE-SL2</b>	<b>450W</b>	<b>D15</b> (Special order) <b>D30</b> <b>D60</b> <b>D90</b> <b>D120</b> (Standard) <b>D120HT</b> (ROBAX)	<b>LV</b> 100-277Vac <b>HV</b> 277-480Vac <b>SHV</b> 600Vac	<b>3000K</b> <b>4000K</b> <b>5000K</b> (Standard)	<b>19</b> Crane Bracket <b>24</b> Adjustable Bracket <b>HOOK</b> Hook <b>90ALU</b> 90° Aluminum Shade <b>VISOR</b> Visor <b>3/4 LID</b> 3/4" Stem Mount Lid <b>SC</b> Safety Cable <b>SGS</b> Surge Suppressor

**Example: BE-SL2-450W-D120-LV-5000K-16-SC-SGS**



### FIND YOUR EXACT PART NUMBER USING OUR NEW PART NUMBER GENERATOR

Product specs may vary depending on the exact wattage and voltage. For complete specs and pictures, visit our new part number generator, which includes new 3D drawings, spec sheets, IES files, certifications, dimensions, bracket info & more.

[www.ledinaction.com/part-number-guide/](http://www.ledinaction.com/part-number-guide/)

# UNIVERSAL INDUSTRIAL LED LIGHT

## 14,000 LM - 45,000 LM

### BE-CHB

The CHB High Bay is built to withstand heavy vibration. Reduce lighting maintenance and downtime by replacing 1000W metal halide high bay and crane lighting. Wide range voltage options available with a superior chipset and driver.

Custom heavy-duty adjustable and non-adjustable bracket options are available for mounting. Temperature rating up to +65°C.



### KEY FEATURES:

- Available in LV, HV, SHV, AC & DC Input
- **Nichia** Chip Set - L70 Lifespan of >100,000 Hours
- **Light Weight** Durable High Bay
- **140lm/W/150lm/W** High Lumen Output
- **IP65** Water Spray Test Approved
- **+65°C** Temperature Rating
- Multiple **Mounting Options** Available for Various Applications



INVENTRONICS



### SPECIFICATIONS

<b>Luminous Efficacy</b>	140lm/W (100W - 200W) 150lm/W (240W & 300W)
<b>CCT</b>	3000K, 4000K, 5000K (Standard)
<b>CRI</b>	>Ra 70
<b>Beam Angle</b>	50°, 90°, 120° (100W - 200W) 30°, 60°, 90°, 120° (240W & 300W)
<b>Input Voltage</b>	<b>LV:</b> 100-277Vac (250Vdc) <b>HV:</b> 277-480Vac <b>SHV:</b> 600V (240W & 300W Only)
<b>IP Rating</b>	IP65
<b>L70 Lifespan</b>	>100,000 Hours
<b>LED Driver</b>	MeanWell / Inventronics
<b>Chipset</b>	Nichia
<b>Operating Temp.</b>	-40°C ~ +65°C
<b>Warranty</b>	5 Year Warranty
<b>Certifications</b>	cUL, CE, DLC, UL, RoHS



LUMENS	LED WATTAGE	HID EQUIVALENT
45,000 lm	300W	1000W
36,000 lm	240W	800W
28,000 lm	200W	700W
21,000 lm	150W	600W
16,800 lm	120W	400W
14,000 lm	100W	250W



## MOUNTING OPTIONS

<p><b>HIGH BAY</b></p>  <p><b>LOOP HANGING (STANDARD)</b></p>	<p><b>AREA/FLOOD LIGHT</b></p>  <p><b>BRACKET 03</b></p>	<p><b>MAST LIGHT</b></p>  <p><b>BRACKET 03 + BRACKET 07 (SLIP FITTER)</b></p>	<p><b>CRANE LIGHT</b></p>  <p><b>BRACKET 11</b></p>
<p><b>HOOK</b></p>  <p><b>HOOK</b></p>	<p><b>65°/90° ALU SHADE</b></p>  <p><b>90ALU</b></p>	<p><b>PC REFLECTOR</b></p>  <p><b>PCREFL</b></p>	

## FIXTURE ORDERING MATRIX

Product Name	Wattage	Lens Degree	Input Voltage	CCT	Brackets	Options
<b>BE-CHB</b>	100W	D50	<b>LV</b> 100-277Vac	<b>3000K</b>  <b>4000K</b>  <b>5000K (Standard)</b>	<b>03</b> Heavy Duty Adjustable Bracket  <b>07</b> Slip Fitter  <b>11</b> Heavy Duty Non-Adjustable C-Bracket	<b>SC</b> Safety Cable <b>SGS</b> Surge Suppressor <b>HOOK</b> Hook <b>90ALU</b> 90° ALU Shade <b>65ALU</b> 65° ALU Shade <b>PC REFL</b> PC Reflector <b>RM</b> Remote Mount <b>STM</b> Stem Mount <b>PT</b> Pigtail <b>MS</b> Motion Sensor
	120W	D90				
	150W	D120	<b>HV</b> 277-480Vac			
	200W	D120HT (ROBAX)				
	240W	D30	<b>LV</b> 100-277Vac			
	300W	D60				
	D90	<b>HV</b> 277-480Vac				
	D120		<b>SHV</b> 600Vac			
	D120HT (ROBAX)					

**Example: BE-CHB-100W-D120-LV-5000K-03-07-SC-SGS**



### FIND YOUR EXACT PART NUMBER USING OUR NEW PART NUMBER GENERATOR

Product specs may vary depending on the exact wattage and voltage. For complete specs and pictures, visit our new part number generator, which includes new 3D drawings, spec sheets, IES files, certifications, dimensions, bracket info & more.

[www.ledinaction.com/part-number-guide/](http://www.ledinaction.com/part-number-guide/)

# UNIVERSAL INDUSTRIAL LED LIGHT

## 7,000 LM - 12,600 LM

### BE-CHB

The CHB is a low-profile, durable fixture designed to quickly and easily upgrade existing HID and fluorescent fixtures. With a superior chipset, driver and high lumen output of 140lm/W, the CHB is built to reduce lighting maintenance and downtime by replacing up to 250W metal halide fixtures.

Adjustable and non-adjustable bracket options are available for mounting. Temperature rating up to +65°C.

#### KEY FEATURES:

- **MeanWell** Driver - 100/277 Vac (127-431Vdc)
- **Nichia** Chip Set - L70 Lifespan of >100,000 Hours
- **Low Profile** Durable High Bay
- **140lm/W** High Lumen Output
- **IP65** Water Spray Test Approved
- **+65°C** Temperature Rating
- Multiple **Mounting Options** Available for Various Applications



#### SPECIFICATIONS

<b>Luminous Efficacy</b>	140lm/W
<b>CCT</b>	3000K, 4000K, 5000K (Standard)
<b>CRI</b>	>Ra 70
<b>Beam Angle</b>	90°, 120°
<b>Input Voltage</b>	<b>LV:</b> 100-277Vac (250 Vdc)
<b>IP Rating</b>	IP65
<b>L70 Lifespan</b>	>100,000 Hours
<b>LED Driver</b>	MeanWell
<b>Chipset</b>	Nichia
<b>Operating Temp.</b>	-30°C ~ +65°C
<b>Warranty</b>	5 Year Warranty
<b>Certifications</b>	cUL, CE, DLC, UL, RoHS



LUMENS	LED WATTAGE	HID EQUIVALENT
12,600 lm	90W	250W
9,800 lm	70W	180W
7,000 lm	50W	120W

## MOUNTING OPTIONS

<p><b>HIGH BAY</b></p>  <p><b>LOOP HANGING (STANDARD)</b></p>	<p><b>AREA/FLOOD LIGHT</b></p>  <p><b>BRACKET 22</b></p>	<p><b>MAST LIGHT</b></p>  <p><b>BRACKET 22 + BRACKET 07 (SLIP FITTER)</b></p>	<p><b>CRANE LIGHT</b></p>  <p><b>BRACKET 27</b></p>
<p><b>HOOK</b></p>  <p><b>HOOK</b></p>	<p><b>90° ALU SHADE</b></p>  <p><b>90ALU</b></p>		<p><b>PC REFLECTOR</b></p>  <p><b>PCREFL</b></p>

## FIXTURE ORDERING MATRIX

Product Name	Wattage	Lens Degree	Input Voltage	CCT	Brackets	Options
<b>BE-CHB</b>	50W 70W 90W	D90 D120	LV 100-277Vac	3000K 4000K 5000K (Standard)	22 Heavy Duty Adjustable Bracket  07 Slip Fitter  27 Heavy Duty Non-Adjustable C-Bracket	SC Safety Cable  SGS Surge Suppressor  HOOK Hook  90ALU 90° ALU Shade  PC REFL PC Reflector  PT Pigtail

**Example: BE-CHB-50W-D120-LV-5000K-22-07-SC-SGS**



### FIND YOUR EXACT PART NUMBER USING OUR NEW PART NUMBER GENERATOR

Product specs may vary depending on the exact wattage and voltage. For complete specs and pictures, visit our new part number generator, which includes new 3D drawings, spec sheets, IES files, certifications, dimensions, bracket info & more.

[www.ledinaction.com/part-number-guide/](http://www.ledinaction.com/part-number-guide/)

# LINEAR HIGH BAY

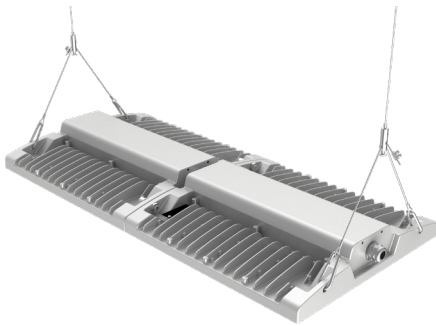
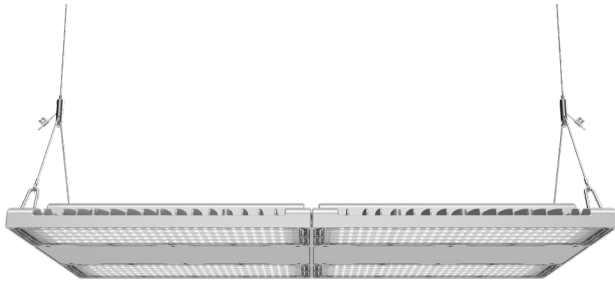
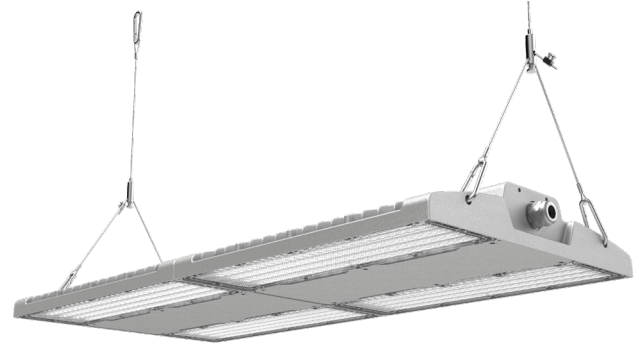
## BE-LHB09

Linear high bay lighting for indoor or outdoor use that delivers symmetric lighting distribution that is suitable for high ceiling mounting. Smart control options include a photocell, PIR sensor, motion sensor, and an emergency backup.

Ideal for high bay lighting in aisles, workshops, and warehouses.

### KEY FEATURES:

- **140lm/W** Luminous Efficacy
- **Multiple Beam Angles** for Workshops & Warehouses
- **Anti-Glare Control**
- Modular Design for **Heat Dissipation**
- **Smart Control Options**
- **Mounting Options**



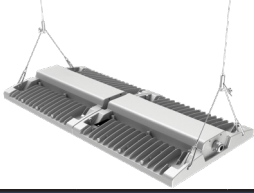
### SPECIFICATIONS

<b>Luminous Efficacy</b>	140lm/W
<b>CCT</b>	4000K, 5000K (Standard)
<b>CRI</b>	>Ra 80
<b>Beam Angle</b>	60°, 90°, 25°x85°, 60°x100°, 80°x100°
<b>Input Voltage</b>	<b>LV:</b> 100-277Vac <b>HV:</b> 277-480Vac (Not 400W)
<b>IP Rating</b>	IP66
<b>L70 Lifespan</b>	>131,000 Hours
<b>LED Driver</b>	Sosen
<b>Chipset</b>	Seoul
<b>Operating Temp.</b>	-30°C ~ +50°C
<b>Warranty</b>	5 Year Warranty
<b>Certifications</b>	DLC, UL, cUL

LUMENS	LED WATTAGE	HID EQUIVALENT
56,000 lm	400W	1000W
42,000 lm	300W	800W
28,000 lm	200W	700W
21,000 lm	150W	600W
14,000 lm	100W	300W

## MOUNTING OPTIONS

### SUSPENSION MOUNT (STANDARD)



### NON-ADJUSTABLE CEILING MOUNT



### 60° ADJUSTABLE CEILING MOUNT

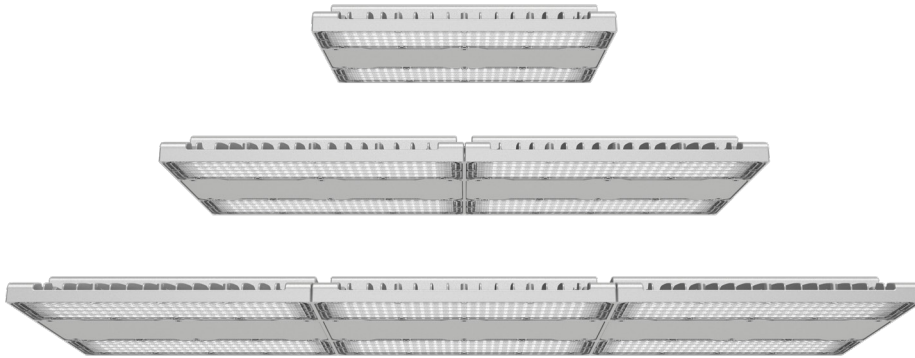


## FIXTURE ORDERING MATRIX

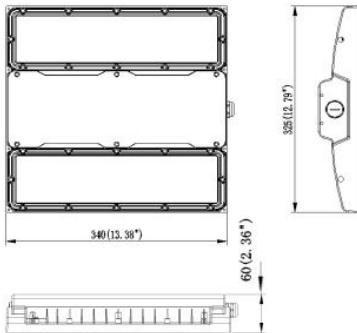
Product Name	Wattage	Lens Degree	Input Voltage	CCT	Options
BE-LHB09	100W	D60	LV 100-277Vac (Standard)	3000K	<b>Suspension</b> Suspension Mount (Standard)  <b>Non-Adjustable</b> Non-Adjustable Ceiling Mount  <b>Adjustable</b> 60° Adjustable Ceiling Mount
	150W	D90		4000K	
	200W	D25x85	5000K (Standard)		
	300W	D60x100			
	400W	D80x100			

**Example: BE-LHB09-100W-D60-LV-5000LK-ADJUSTABLE**

## FIXTURE SIZING



## DIMENSIONS & SHIPPING INFORMATION



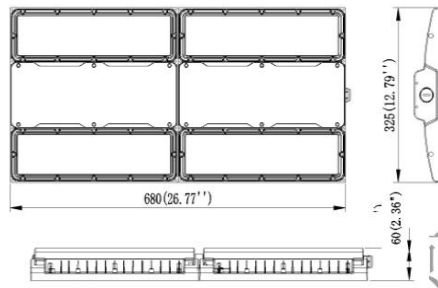
#### 100W / 150W

##### Fixture Dimensions:

340x325x60mm (13.38"x12.8"x2.36")  
9 lbs

##### Box Dimensions:

420x385x135mm (16.53"x15.16"x5.31")  
10 lbs



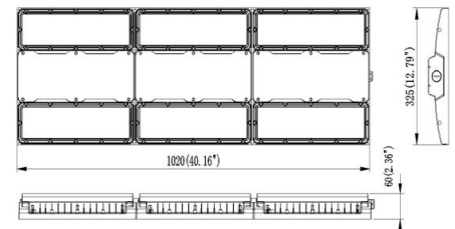
#### 200W / 300W

##### Fixture Dimensions:

680x325x60mm (26.77"x12.8"x2.36")  
15 lbs

##### Box Dimensions:

760x385x135mm (29.92"x15.16"x5.31")  
17 lbs



#### 400W

##### Fixture Dimensions:

1020x325x60mm (40.16"x12.8"x2.36")  
24 lbs

##### Box Dimensions:

1100x385x135mm (43.31"x15.16"x5.31")  
26 lbs

# INDUSTRIAL LED FLOOD LIGHT

## BE-FL27

The FL27 LED flood is built for harsh environments. It's made with anti-corrosion low copper housing and a galvanized bracket. Available with loop-in and loop-out cable entry to minimize wiring.

Ideal for heavy industrial sites and indoor and outdoor applications.

### KEY FEATURES:

- Temperature Rating of -30°C up to +50°C
- Built-in 10kV Surge Protection
- Anti-Glare Control
- Pole Mounting Bracket Available
- Copper Housing for Corrosion Resistance
- Polycarbonate Lens
- Standard 5' Pigtail



INVENTRONICS

NICHIA



Dual Cable Entry Options for Daisy Chain Connection

### SPECIFICATIONS

Luminous Efficacy	150lm/W
CCT	3000K, 4000K, 5000K (Standard)
CRI	Ra70
Input Voltage	LV: 100-277Vac HV: 277-480Vac
IP Rating	IP66
Lens Degree	55°x125°, 60°, 25°, 26°x60°
LED Driver	Sosen (LV) Inventronics (HV)
Chipset	Nichia
Operating Temp.	-30°C ~ +50°C
Warranty	5 Year Warranty
Certifications	UL, cUL, CE, RoHS

LUMENS	LED WATTAGE
45,000 lm	300W
36,000 lm	240W
30,000 lm	200W
22,500 lm	150W
15,000 lm	100W
7,500 lm	50W

## MOUNTING OPTIONS

### WALL MOUNT (STANDARD)



(STANDARD)

### POLE MOUNTING ADAPTOR (PM)

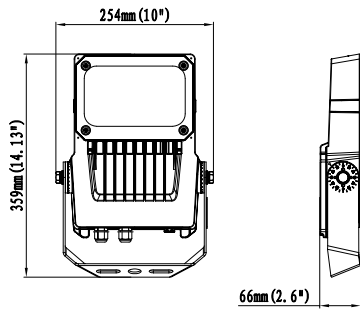


## FIXTURE ORDERING MATRIX

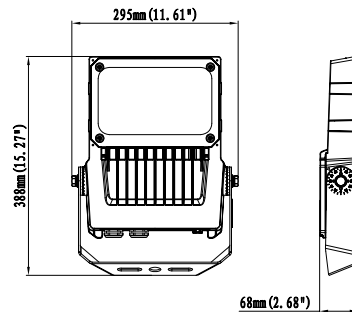
Product Name	Wattage	Input Voltage	Lens Degree	CCT	Options
BE-FL27	50W	LV 100-277Vac (Standard)	D55°x125°	3000K	<b>WM</b> Wall Mount (Standard) <b>PM</b> Pole Mount <b>PT</b> Pigtail (Standard is 5') 6' Pigtail (Optional) 10' Pigtail (Optional)
	100W		D60°		
	150W		D25°	5000K (Standard)	
	200W	HV 277-480Vac	D26°x60°		
	240W				
	300W				

Example: BE-FL27-50W-LV-D60-5000K-PM

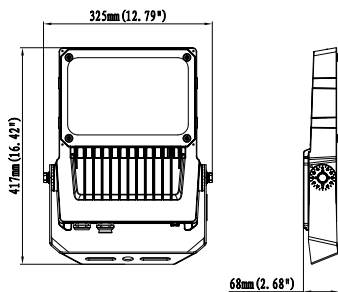
## DIMENSIONS & SHIPPING INFORMATION



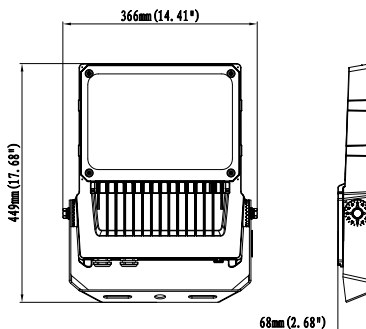
**50W**  
3.5 kg (7.7 lbs)



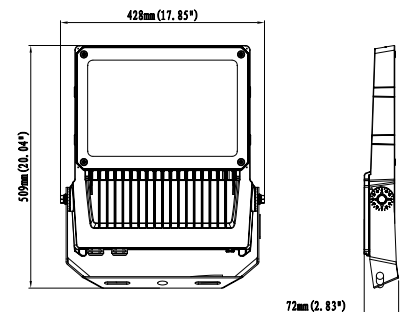
**100W**  
4.3 kg (9.5 lbs)



**150W**  
5.2 kg (11.5 lbs)



**200W**  
6.1 kg (13.4 lbs)



**240W & 300W**  
8.4 kg (18.5 lbs)

# FOOD PROCESSING LIGHT

## BE-HCP06

The Food Processing Light is designed specifically for food processing applications. This fixture meets or exceeds all NSF inspection zone requirements. The streamlined design allows easy cleaning and prevents the build-up of any liquid or particles.

Ideal for high bay lighting anywhere the NSF standards are required including inspection areas, wash-down zones, freezers and more.

### KEY FEATURES:

- **IP69K** Highest Level of Protection Against Water and High-Pressure Washdown
- **CRI 93** High Colour Rendering for Inspection Zones
- **Powder Coated** Materials; No Harmful Substances or Chemicals
- **Shatterproof** Polycarbonate Lens
- **No Exposed Screws**
- **Corrosion Resistant and Streamlined** Body Design
- L70 Lifespan of **>100,000 Hours**



### SPECIFICATIONS





<b>Luminous Efficacy</b>	125lm/W *Up to 140lm/W Available Upon Request
<b>CCT</b>	4000K, 5000K (Standard)
<b>CRI</b>	>Ra 90 *(>Ra80)
<b>Beam Angle</b>	90°, 120° (Standard)
<b>Input Voltage</b>	<b>LV:</b> 100-277Vac (Standard) <b>HV:</b> 277-480Vac, 50/60 Hz
<b>IP Rating</b>	IP69K
<b>L70 Lifespan</b>	>100,000 Hours
<b>LED Driver</b>	SOSEN
<b>Dimming</b>	Dimmable
<b>Chipset</b>	Nichia
<b>Operating Temp.</b>	-30°C ~ +50°C
<b>Warranty</b>	5 Year Warranty
<b>Certifications</b>	NSF, cUL, UL, CE, RoHS, DLC



LUMENS	LED WATTAGE	HID EQUIVALENT
30,000 lm	240W	800W
24,000 lm	200W	700W
18,000 lm	150W	600W
12,000 lm	100W	250W



## MOUNTING OPTIONS

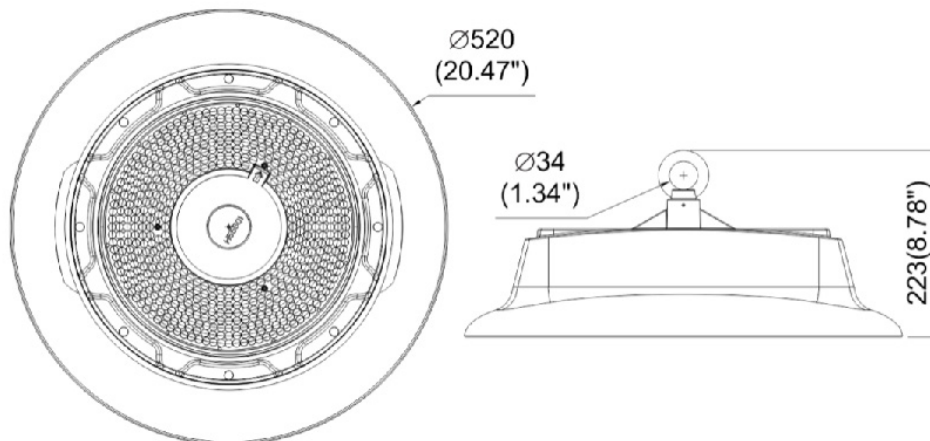
LOOP HANGING	WALL MOUNT	SURFACE MOUNT	STEM MOUNT
			
<b>STANDARD</b>	<b>BRACKET 15</b>	<b>BRACKET 21</b>	<b>THREAD: 3/4" NPT</b>

## FIXTURE ORDERING MATRIX

Product Name	Wattage	Lens Degree	Input Voltage	CCT	Options
<b>BE-HCP06</b>	<b>100W</b>	<b>D90</b>  <b>D120 (Standard)</b>	<b>LV</b> 100-277Vac (Standard)  <b>HV</b> AC 277-480Vac	<b>4000K</b>  <b>5000K (Standard)</b>	<b>15</b> Bracket 15 <b>21</b> Surface Mount Bracket 21 <b>STM</b> Stem Mount <b>MS</b> Built-In Motion Sensor (Special Order) <b>SC</b> Safety Cable <b>SGS</b> Surge Suppressor
	<b>150W</b>				
	<b>200W</b>				
	<b>240W</b>				

**Example: BE-HCP06-100W-D120-LV-5000K-15-SC-SGS**

## DIMENSIONS & SHIPPING INFORMATION



**Fixture Weight:** 21 lbs

**Shipping Weight:** 25 lbs

**Box Dimensions:**  
580x580x272mm

# LINEAR FOOD PROCESSING LIGHT

## BE-LHB19

The Linear Food Processing Light is designed specifically for food processing applications. This fixture meets or exceeds all NSF inspection zone requirements. The small, slender LED has an IP69K rating for heavy washdown applications or daily sanitation.

Ideal for high bay lighting anywhere the NSF standards are required including inspection areas, wash-down zones, freezers and more.

### KEY FEATURES:

- **IP69K** Highest Level of Protection Against Water & High-Pressure Washdown
- **CRI 90** High Colour Rendering for Inspection Zones
- **Sandblasting Oxidation**
- **Built-In 4kV Surge Protection**
- **Corrosion Resistant and Streamlined** Body Design
- **L70 Lifespan of >100,000 Hours**



### SPECIFICATIONS

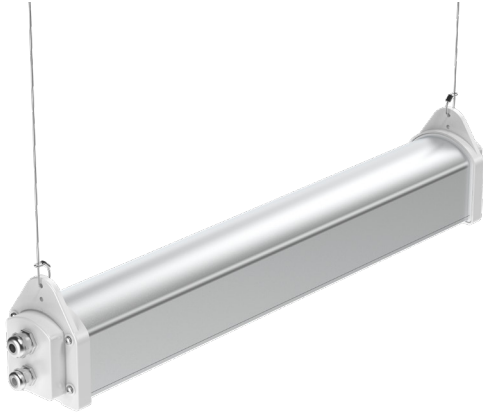
<b>Luminous Efficacy</b>	120lm/W
<b>CCT</b>	3000K, 4000K, 5000K (Standard)
<b>CRI</b>	>Ra 90
<b>Beam Angle</b>	60x90°, 90x100° (Standard)
<b>Input Voltage</b>	100-347Vac
<b>IP Rating</b>	IP69K
<b>L70 Lifespan</b>	>100,000 Hours
<b>LED Driver</b>	WP
<b>Dimming</b>	Dimmable
<b>Chipset</b>	Nichia
<b>Operating Temp.</b>	-30°C ~ +50°C
<b>Warranty</b>	5 Year Warranty
<b>Certifications</b>	NSF, RoHS, DLC, CE, UL, cUL



LUMENS	LED WATTAGE	HID EQUIVALENT
14,400 lm	120W	400W
8,400 lm	70W	200W

## MOUNTING OPTIONS

### SUSPENSION MOUNT (STANDARD)



### CEILING MOUNT

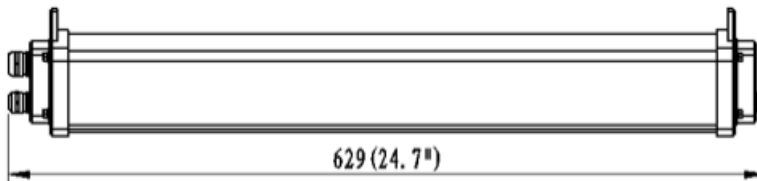
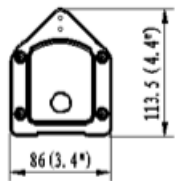


## FIXTURE ORDERING MATRIX

Product Name	Wattage	Lens Degree	CCT	Options
BE-LHB19	70W	D60*90	3000K	<b>CM</b> Ceiling Mount <b>SC</b> Safety Cable <b>SGS</b> Surge Suppressor
	120W	D90*100 (Standard)	4000K	
			5000K (Standard)	

**Example: BE-LHB19-120W-D90\*100-5000K-CM-SC-SGS**

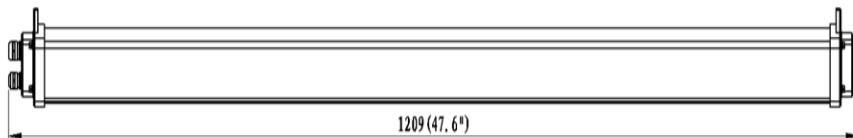
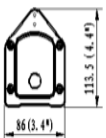
## DIMENSIONS & SHIPPING INFORMATION



### 70W

**Fixture Weight:** 6 lbs  
**Fixture Dimensions:**  
 24.7"x3.4"x4.4"

**Shipping Weight:** 8 lbs  
**Box Dimensions:**  
 27.3"x9.8"x6.5"



### 120W

**Fixture Weight:** 9.5 lbs  
**Fixture Dimensions:**  
 47.5"x3.4"x4.4"

**Shipping Weight:** 10.5 lbs  
**Box Dimensions:**  
 50.2"x9.8"x6.5"

# HAZARDOUS LOCATION LIGHT - 1319C - CID2

## BE-EXP-1319C

The 1319C fixture withstands extreme temperatures, explosion and fire hazards, as well as flammable gases and vapours. This linear driverless LED fixture can withstand temperatures up to 100°C with CID2 and CIID2 classification ratings.

Ideal for high heat environments, petrochemical complexes, painting facilities, offshore platforms, oil and gas complexes, and more.

### KEY FEATURES:

- CID2 Group A, B, C, D
- CIID2 Group F, G
- Temperature Rating up to -40°C ~ +100°C
- Built-In 6kV Surge Protection
- Mounting Options
- Driverless Hazardous LED
- L70 Lifespan of >60,000 Hours

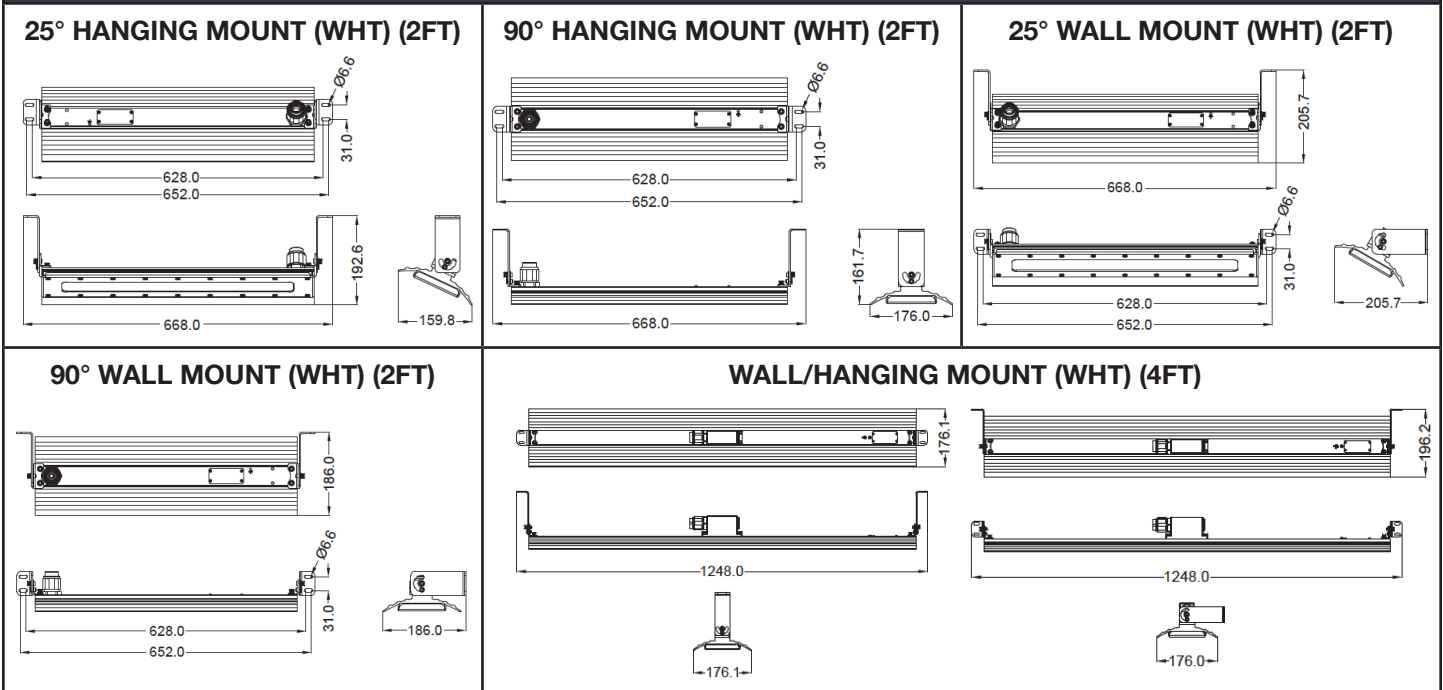


### SPECIFICATIONS

<b>Luminous Efficacy</b>	120lm/W
<b>CCT</b>	3000K, 5000K (Standard)
<b>CRI</b>	>Ra 70 (5000K), >Ra 80 (3000K)
<b>Beam Angle</b>	>110°
<b>Input Voltage</b>	120V / 277V 347 / 480V (4FT-80W)
<b>IP Rating</b>	IP67
<b>L70 Lifespan</b>	>60,000 Hours
<b>Operating Temp.</b>	-40°C to +100°C (40W) -40°C to 85°C (60W & 80W-LV) -40°C to 65°C (80W-HV & 120W)
<b>Dimensions</b>	2FT & 4FT
<b>Warranty</b>	65°C and Below - 5 Year Warranty 66°C-85°C - 2 year Warranty 86°C - 100°C - 1 Year Warranty
<b>Certifications</b>	UL, cUL
<b>Classifications</b>	CID2 Group A, B, C, D CIID2 Group F, G

LUMENS	LED WATTAGE
14,400 lm	120W
9,600 lm	80W
7,200 lm	60W
4,800 lm	40W

## MOUNTING OPTIONS

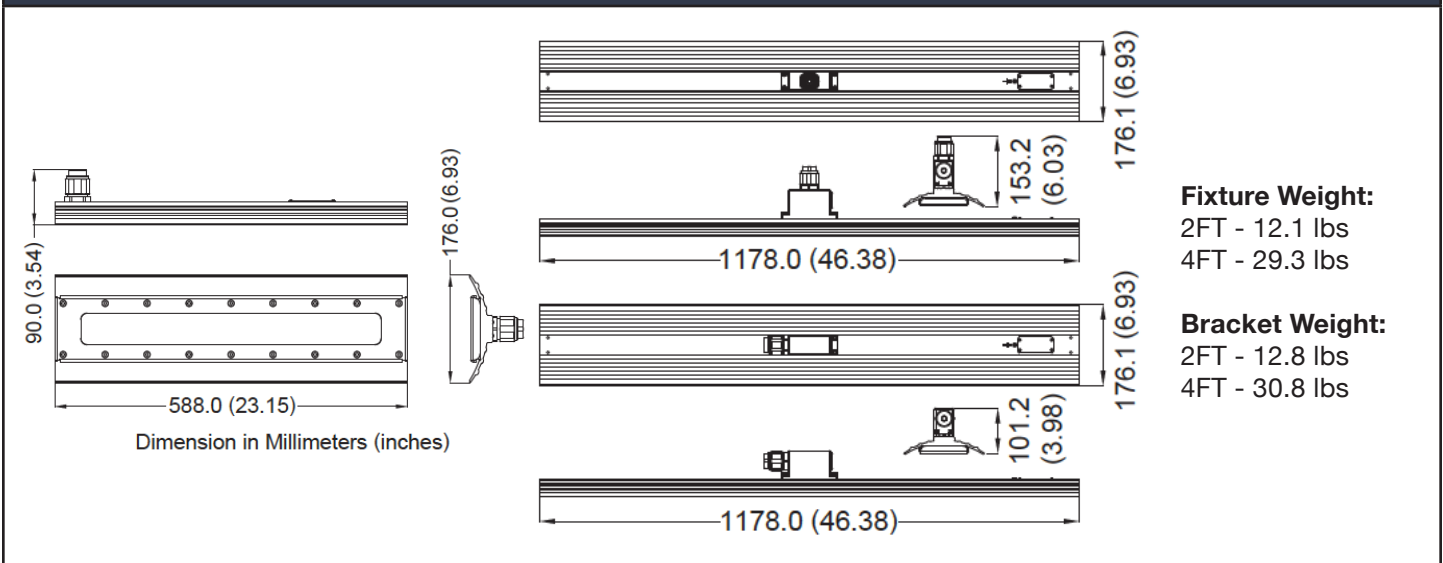


## FIXTURE ORDERING MATRIX

Product Name	Size	Wattage	Input Voltage	CCT	Classification	Options
BE-EXP-1319C	2FT	40W	120V	3000K	CID2 / CIID2	<b>WHT</b> Adjustable Wall/Hanging Mount <b>SC</b> Safety Cable <b>SGS</b> Surge Suppressor
		60W	277V			
	4FT	40W	120V			
		80W	277V			
		120W	347V (80W Only)	5000K (Standard)		
			480V (80W Only)			

**Example: BE-EXP-1319C-2FT-40W-120V-5000K-CID2-WHT-SC-SGS**

## DIMENSIONS & SHIPPING INFORMATION



# HIGH TEMP LOCATION LIGHT - HH03 - CID2

## BE-HH03

The HH03 fixture withstands extreme temperatures, explosion and fire hazards, as well as flammable gases and vapours. This driverless LED fixture can withstand temperatures up to 100°C with a CID2 classification rating.

Ideal for high heat environments, petrochemical complexes, painting facilities, offshore platforms, oil and gas complexes, and more.

### KEY FEATURES:

- CID2 Group A, B, C, D
- Temperature Rating of -40°C up to +100°C
- Built-In 6kV Surge Protection
- Mounting Options
- Driverless Hazardous LED
- L70 Lifespan of >60,000 Hours



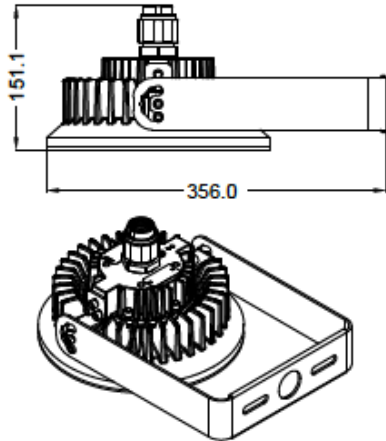
### SPECIFICATIONS

<b>Luminous Efficacy</b>	100lm/W
<b>CCT</b>	3000K, 5000K (Standard)
<b>CRI</b>	>Ra 70 (5000K), >Ra 80 (3000K)
<b>Beam Angle</b>	>110°
<b>Input Voltage</b>	120V / 277V
<b>IP Rating</b>	IP67
<b>L70 Lifespan</b>	>60,000 Hours
<b>Operating Temp.</b>	-40°C to +100°C (30W-60W) -40°C to +85°C (80W)
<b>Warranty</b>	66°C-85°C - 2 year Warranty 86°C-100°C - 1 Year Warranty
<b>Certifications</b>	UL, cUL
<b>Classifications</b>	CID2 Group A, B, C, D

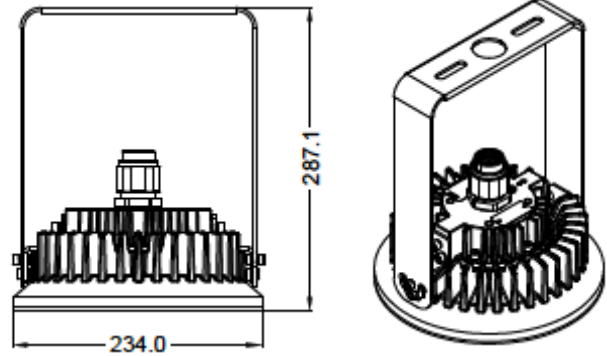
LUMENS	LED WATTAGE
8,000 lm	80W
6,000 lm	60W
5,000 lm	50W
4,000 lm	40W
3,000 lm	30W

## MOUNTING OPTIONS

**WALL MOUNT 90 (WHT)**



**HANGING MOUNT 90 (WHT)**

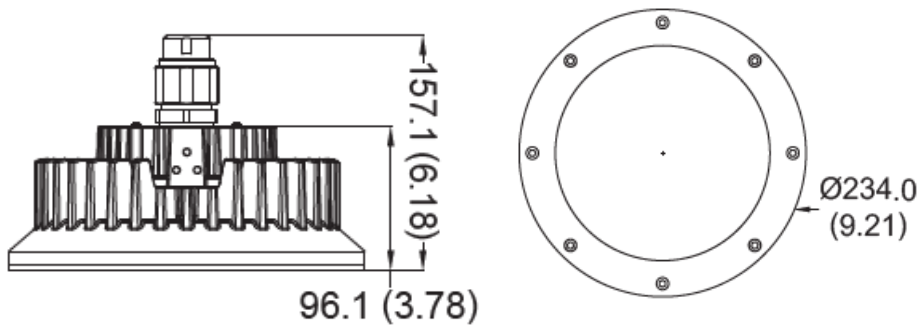


## FIXTURE ORDERING MATRIX

Product Name	Wattage	Input Voltage	CCT	Classification	Options
BE-HH03	30W	120V 277V	3000K 5000K (Standard)	CID2	<b>WHT</b> Adjustable Wall / Hanging Mount <b>SC</b> Safety Cable <b>SGS</b> Surge Suppressor
	40W				
	50W				
	60W				
	80W				

Example: BE-HH03-30W-120V-5000K-CID2-WHT-SC-SGS

## DIMENSIONS & SHIPPING INFORMATION



**Fixture Weight:** 12 lbs  
**Fixture w/ Bracket Weight:** 14 lbs

# UNIVERSAL HAZLOC LED

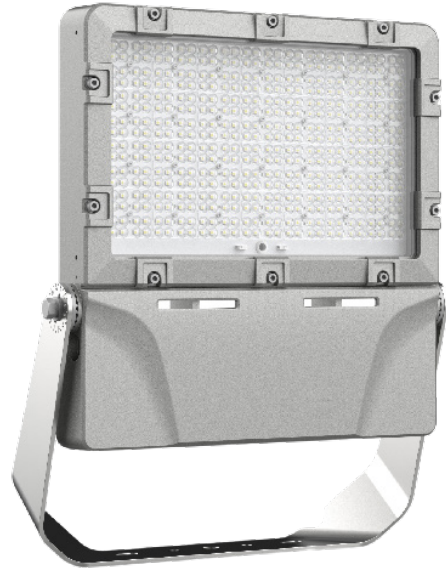
## BE-EXP-FL23

The EXP-FL23 fixture is hazardous rated with NEMA 4X and marine grade ratings suitable for indoor or outdoor harsh environments. This LED flood light fixture has classification ratings of CID2, CIID1, CIID2, and CIII.

Ideal for petrochemical complexes, offshore platforms, oil and gas refineries, and more.

### KEY FEATURES:

- CID2, CIID1, CIID2, CIII
- IP66 / NEMA 4X
- UL1598A Marine Grade
- HV up to 480 Vac
- Temperature Rating of -40°C up to +65°C
- Built-In 10Kv Surge Protection
- Dual Cable Entry Option for Daisy Chain Connect
- Stainless Steel Bracket Included & Installed
- Copper Aluminum Body for Corrosion Resistance
- PC Lens + Tempered Glass
- Visor & Wire Guard Available

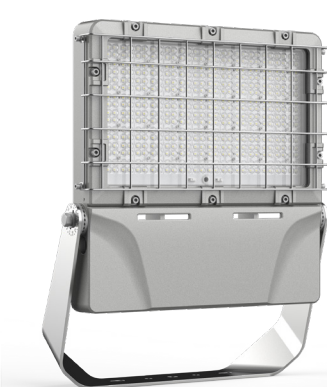


### SPECIFICATIONS

Luminous Efficacy	150lm/W
CCT	5000K (Standard)
CRI	Ra 70
Input Voltage	<b>LV:</b> 120-277Vac <b>HV:</b> 277-480Vac
IP Rating	IP66 / NEMA 4X / IK08
Operating Temp.	-40°C ~ +65°C
Lens Degree	D15, D30, D60, D90 (Standard)
Accessories	Visor, Wire Guard
Driver	Inventronics / 10Kv SPD
Chipset	Nichia
Warranty	5 Year Warranty
Certifications	UL, cUL
Classifications	CID2 Groups A, B, C, D CIID1 Groups E, F, G CIID2 Groups F, G CIII



Visor



Wire Guard

LUMENS	WATTAGE
36,000 lm	240W
30,000 lm	200W
22,500 lm	150W



## MOUNTING OPTIONS

### STAINLESS STEEL BRACKET

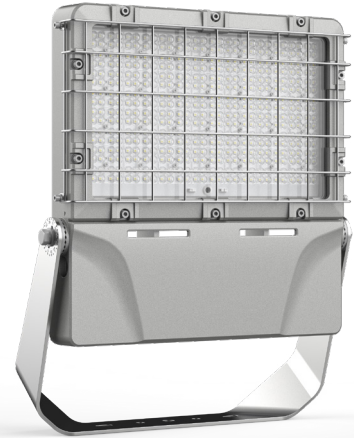


**(INCLUDED)**

### VISOR



### WIRE GUARD

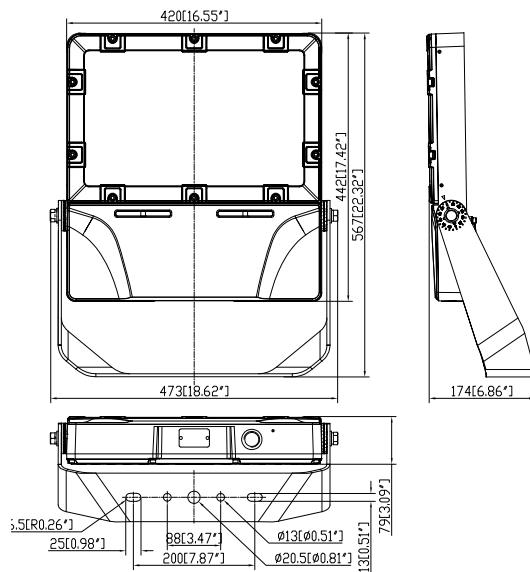


## FIXTURE ORDERING MATRIX

Product Name	Wattage	Input Voltage	Degree Lens	CCT	Classification	Options
BE-EXP-FL23	150W	LV 120-277 Vac	D15	5000K (Standard)	CID2 / CIID1 / CIID2 / CIII	<b>VISOR</b>  <b>WIRE GUARD</b>  <b>PT</b> No Pigtail (Standard) 6' Pigtail (Optional) 10' Pigtail (Optional)
	200W		D30			
	240W	HV 277-480 Vac	D60			
			D90 (Standard)			

**Example: BE-EXP-FL23-150W-LV-D90-5000K-CID2-VISOR-6PT**

## DIMENSIONS & SHIPPING INFORMATION



**Dimensions:**  
 567x473x174 mm  
 22.32"x18.62"x6.86"

**Weight:** 13 kg (29 lbs)

# UNIVERSAL HAZLOC LED

## BE-EXP-RD05

The EXP-RD05 fixture is hazardous rated with NEMA 4X and marine grade ratings suitable for indoor or outdoor harsh environments. This LED fixture has classification ratings of CID2, CIID1, CIID2, and CIII.

Ideal for petrochemical complexes, painting facilities, offshore platforms, oil and gas refineries, and more.

### KEY FEATURES:

- CID2, CIID1, CIID2, CIII
- IP66 / NEMA 4X
- UL1589A Marine Grade
- HV up to 480 Vac
- Temperature Rating of -40°C up to +65°C
- Dual Cable Entry Option for Daisy Chain Connect
- Battery Backup 9W for 1.5 Hours (50W Only)
- 6 Easily Interchangeable Mounting Options



INVENTRONICS LUMILEDS

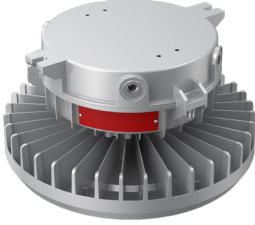
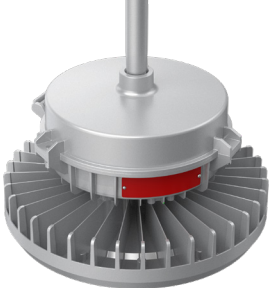
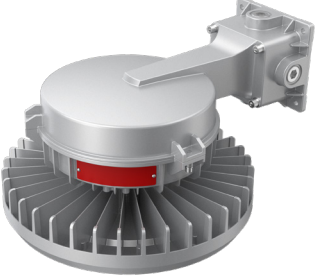

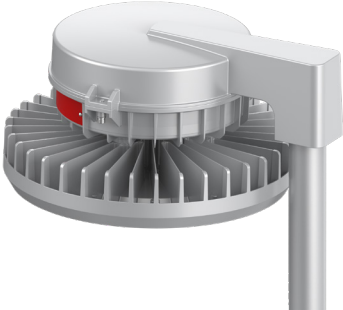
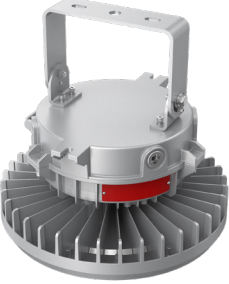


### SPECIFICATIONS

Luminous Efficacy	140lm/W
CCT	5000K (Standard)
CRI	Ra 70
Beam Angle	50W/100W: 96x144, 62x144, 140 150W-240W: 99x148, 63x147, 135
Input Voltage	<b>LV:</b> 120-277Vac <b>HV:</b> 277-480Vac
IP Rating	IP66 / NEMA 4X / IK08
Operating Temp.	-40°C ~ +65°C
Driver	Inventronics
Chipset	Lumileds
Warranty	5 Year Warranty
Certifications	UL, cUL, CSA
Classifications	CID2 Group A, B, C, D CIID1 Group E, F, G CIID2 Group F, G CIII

LUMENS	WATTAGE
33,600 lm	240W
28,000 lm	200W
21,000 lm	150W
14,000 lm	100W
7,000 lm	50W

## MOUNTING OPTIONS

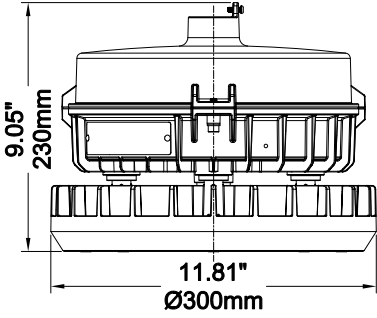
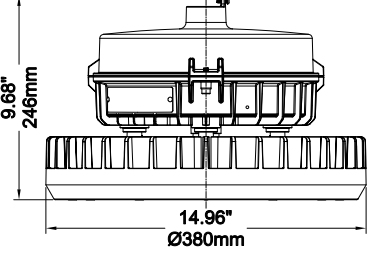
<b>CEILING MOUNT (CM)</b>  	<b>3/4" NPT (3/4 NPT) (STANDARD)</b>  	<b>WALL MOUNT (WM)</b>  
<b>25° STANCHION MOUNT (SM25)</b>  	<b>90° STANCHION MOUNT (SM90)</b>  	<b>ADJUSTABLE BRACKET (AB)</b>  

## FIXTURE ORDERING MATRIX

Product Name	Wattage	Input Voltage	Lens	CCT	Classification	Options
<b>BE-EXP-RD05</b>	50W	<b>LV</b> 120-277Vac  <b>HV</b> 277-480Vac	D96x144	5000K (Standard)	CID2 / CIID1 / CIID2 / CIII	<b>CM</b> Ceiling Mount  <b>3/4 NPT</b> 3/4" NPT Mount (Standard)  <b>WM</b> Wall Mount  <b>SM25</b> 25° Stanchion Mount  <b>SM90</b> 90° Stanchion Mount  <b>AB</b> Adjustable Bracket  <b>PT</b> No Pigtail (Standard) 6" Pigtail (Optional) 10" Pigtail (Optional)
	100W		D62x144			
	150W		D99x148			
	200W		D63x147			
	240W		D135			

Example: BE-EXP-RD05-50W-LV-D140-5000K-CID2-6PT

## DIMENSIONS & SHIPPING INFORMATION

 <p style="text-align: center; margin-top: 10px;"> <b>50W &amp; 100W</b>  <b>6.4 kg (14 lbs)</b> </p>	 <p style="text-align: center; margin-top: 10px;"> <b>150W, 200W &amp; 240W</b>  <b>9.5 kg (21 lbs)</b> </p>
--	--

# UNIVERSAL HAZLOC LED

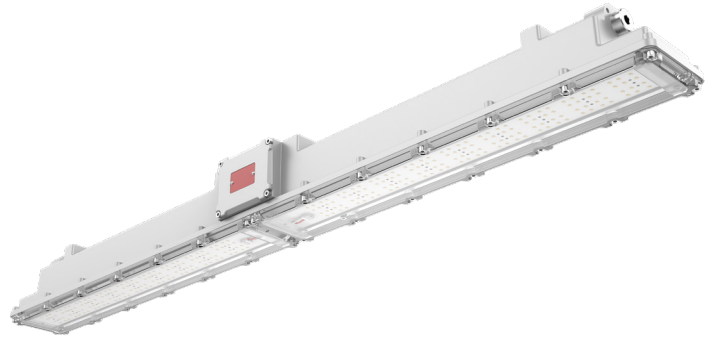
## BE-EXP-LN06

The EXP-LN06 linear fixture is hazardous rated with NEMA 4X and marine grade ratings suitable for indoor or outdoor harsh environments. This LED flood light fixture has classification ratings of CID2, CIID2, and CIII.

Ideal for petrochemical complexes, offshore platforms, oil and gas refineries, and more.

### KEY FEATURES:

- CID2, CIID2, CIII
- IP66 / NEMA 4X
- UL1598A Marine Grade
- HV up to 480 Vac
- Emergency Battery Backup 9W at 1.5 Hours
- Built-In Surge Protection
- Waterproof, Dust-Proof, Anti-Corrosion & Shock Resistance
- Clear Polycarbonate Lens

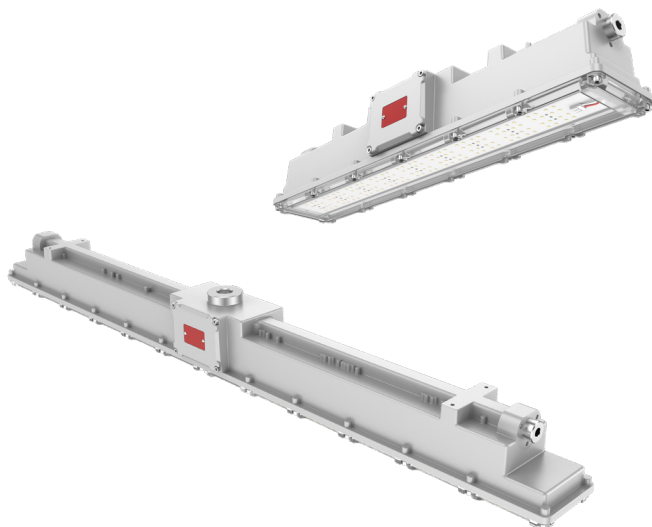


INVENTRONICS LUMILEDS



### SPECIFICATIONS

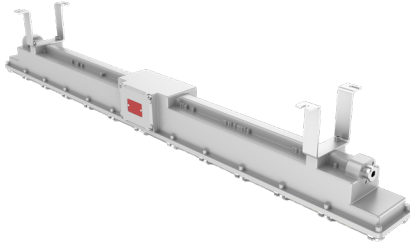
Luminous Efficacy	150lm/W
CCT	5000K (Standard)
CRI	Ra 70
Input Voltage	<b>LV:</b> 120-277Vac <b>HV:</b> 277-480Vac
IP Rating	IP66 / NEMA 4X / IK08
Lens Degree	D17, D30, D55, D85, D146
Operating Temp.	-40°C ~ +65°C
Cable Entry	Top Entry or Side Entry
Mounting Options	Ceiling, Adjustable Bracket, Hoop, Loop, 3/4" Stem Mount
Driver	Inventronics
Chipset	Lumileds
Warranty	5 Year Warranty
Certifications	UL, cUL
Classifications	CID2 Group A, B, C, D CIID2 Group F, G CIII



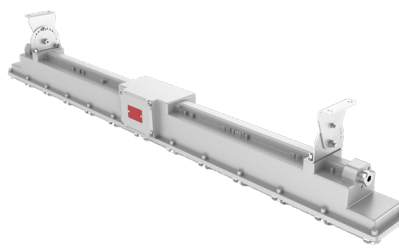
LUMENS	WATTAGE	SIZE
14,000 lm	100W	4 FT
11,200 lm	80W	4 FT
8,400 lm	60W	4 FT
5,600 lm	40W (LV Only)	2 FT

## MOUNTING OPTIONS

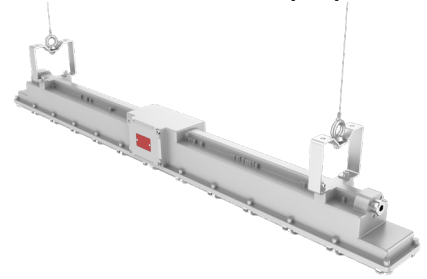
**CEILING MOUNT (CM)**



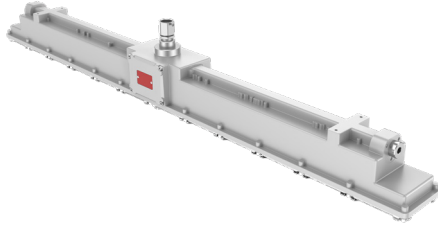
**ADJUSTABLE BRACKET (AB)**



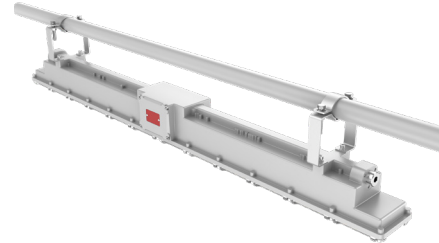
**LOOP MOUNT (LM)**



**3/4" NPT MOUNT (3/4 NPT)**



**CONDUIT MOUNT (CDM)**

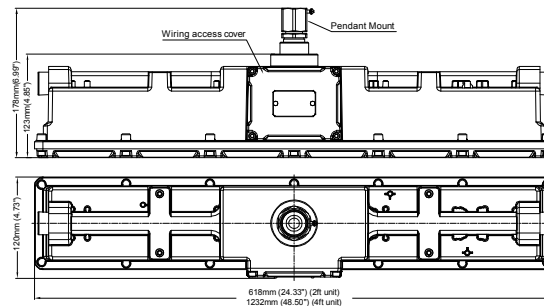


## FIXTURE ORDERING MATRIX

Product Name	Wattage	Size	Input Voltage	Lens Degree	CCT	Classification	Cable Entry	Options
BE-EXP-LN06	40W	2FT	LV 120-277Vac	D17 D30 D55 D85 D146	5000K (Standard)	CID2 / CIID2 / CIII	TE Top Entry  SE Side Entry	<b>CM</b> Ceiling Mount <b>AB</b> Adjustable Bracket <b>LM</b> Loop Mount <b>3/4 NPT</b> 3/4" NPT Mount (Top Entry Only) <b>CDM</b> Conduit Mount (Side Entry Only) <b>PT</b> No Pigtail (Standard) 6' Pigtail (Optional) 10' Pigtail (Optional)
	60W 80W 100W	4FT	LV 120-277Vac  HV 277-480Vac					

Example: BE-EXP-LN06-40W-2FT-LV-D30-5000K-CID2-TE-CM

## DIMENSIONS & SHIPPING INFORMATION



**2FT - 3.3 kg (7.26 lbs)**  
**4FT - 4.9 kg (10.78 lbs)**

# INDUSTRIAL WALL PACK

## BE-WP

The LED Non-Cutoff Wall Pack is created with a die cast aluminum cooling design with excellent optics that improve light distribution. It has a polycarbonate lens with UV stabilizers that do not yellow.

This wall pack can be used in indoor or outdoor heavy industrial lighting applications.

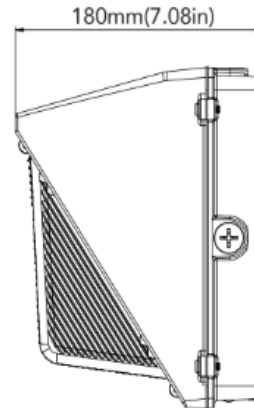
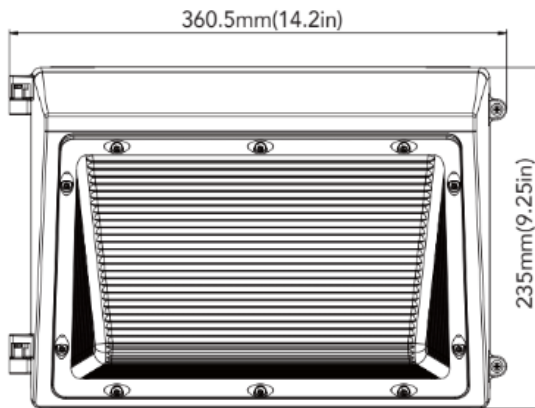


### Weight

- 30W: 6.33 lbs
- 65W: 6.72 lbs
- 90W: 7.32 lbs
- 125W: 8.16 lbs

## SPECIFICATIONS

<b>CCT</b>	4000K, 5000K (Standard)
<b>CRI</b>	Ra70
<b>IP Rating</b>	IP66
<b>Input Voltage</b>	100-277 Vac
<b>Operating Temp</b>	-40°C up to +40°C
<b>Certifications</b>	DLC, cUL, UL
<b>Warranty</b>	5 Year Warranty



LUMENS	WATTAGE
15,000 lm	125W
10,500 lm	90W
7,900 lm	65W
3,600 lm	30W

# INDUSTRIAL HIGH-TEMPERATURE BULB

## BE-HH38

The HH38 is an industrial-grade LED bulb that can be installed into a traditional lighting fixture with an E26 or E39 socket. It is rated IP66 for outdoor/wet locations.

This high-temp LED bulb can be used in extremely cold environments  $-95^{\circ}\text{C}/-130^{\circ}\text{F}$  as well as high temperature areas with a temperature rating up to  $+105^{\circ}\text{C}$  ( $222^{\circ}\text{F}$ ).

### KEY FEATURES:

- **AC Direct Driven Circuit** (No Capacitor)
- **IP66 Waterproof** (Outdoor/Wet Location)
- **$-95^{\circ}\text{C}$  up to  $+105^{\circ}\text{C}$**  ( $-130^{\circ}\text{F}$  up to  $222^{\circ}\text{F}$ )
- **Easy Maintenance**
- **E26 Socket** (E39 Adapter)
- **Tempered Glass** for High Temperature Environments
- **Thermal Insulation Body**
- **$45^{\circ}$  Reflector Included**



### SPECIFICATIONS

<b>Wattage</b>	55W
<b>Lumens</b>	5,000lm
<b>Luminous Efficacy</b>	90lm/W
<b>CCT</b>	5000K
<b>CRI</b>	70
<b>Beam Angle</b>	$110^{\circ}$ (Bulb Only)
<b>Input Voltage</b>	120-277Vac
<b>IP Rating</b>	IP66
<b>Operating Temp</b>	$-95^{\circ}\text{C}$ up to $+105^{\circ}\text{C}$ ( $-130^{\circ}\text{F}$ up to $+222^{\circ}\text{F}$ )
<b>Nominal Lifetime</b>	30,000 Hours
<b>Base</b>	E26 / E39 Adapter
<b>Reflectors</b>	$45^{\circ}$
<b>Included</b>	E39 Adapter & $45^{\circ}$ Reflector
<b>Dimensions</b>	120 mm Wide x 135 mm High



# RECHARGEABLE WORK LIGHT

## BE-RC-01

Our best-selling work light. The RC-01 runs off of a rechargeable battery. It comes with an adjustable polycarbonate stand for simple and easy directional adjustment and has magnetic feet to stay in place. It comes with a USB power bank charging facility for other devices that may need a quick charge while on site.

Ideal for any environment where extra lighting is required; construction sites, warehouses, garages, and more!

### KEY FEATURES:

- Rechargeable
- Magnetic Feet
- Rubber Grip Handle
- Adjustable Polycarbonate Stand
- Power Settings: 3-Hours at 100% & 6-Hours at 50%
- USB Power Bank Charging Facility



### SPECIFICATIONS

Wattage	30W
Lumens	3000lm
Operating Modes	100% / 50%
CCT	6500K
Lens	Anti-Glare
Focus	Area Lighting
Beam Range	25m
Run Time	100% 3 Hours / 50% 6 Hours
Operating Temp.	-5°C to +40°C
Measurements	215 x 192 x 285 mm
Weight	4.5 lbs
Shipping Weight	6 lbs
Shipping Dimensions	16 x 9 x 4"
IP Rating	IP54
Impact Resistance	1 m
Battery (Included)	7.4 6600 mAh Lithium-Ion
Certifications	CE, RoHS

### EXTRA ACCESSORIES

Spare Battery  
BE-RC-01-BATT

### SPECS

7.4 V 6600 mAh Lithium-Ion Battery



# 600 VOLT LED FIXTURES

## 600Vac INPUT VOLTAGE



**BE-CHB-300W/240W**  
Page 15



**BE-HB17-600W**  
Page 11



**BE-SL2-450W**  
Page 13

**M50 SURGE SUPPRESSOR**  
Type 2 Surge Protective Device for 600Vac



### OFFERING A 60-DAY TRIAL

Take advantage our Pilot Project Program and trial 4 LED lights for 60 days, free of charge! Find out more about our Pilot Project Program on Page 50.

## COMMON VOLTAGE PROBLEMS IN INDUSTRIAL PLANTS:

Many industrial plants have had to step down their voltage from 600 Volts as there hasn't been an LED fixture on the market with an input voltage of 600Vac.

## NOW AVAILABLE IN 600VAC!

Save time and manpower with our new 600-Volt LED lighting solution!

Available in These Fixtures:

### ■ 600W SUPERLUX

96,000 Lumen LED  
High Ceiling Applications 60' to 130' +

### ■ 450W SUPERLUX 2

72,000 Lumen LED  
Single Lens, 28 lbs 1000W Replacement

### ■ 300W/240W CHB

45,000 Lumens  
36,000 Lumens

# LOCAL SALES REPRESENTATIVES

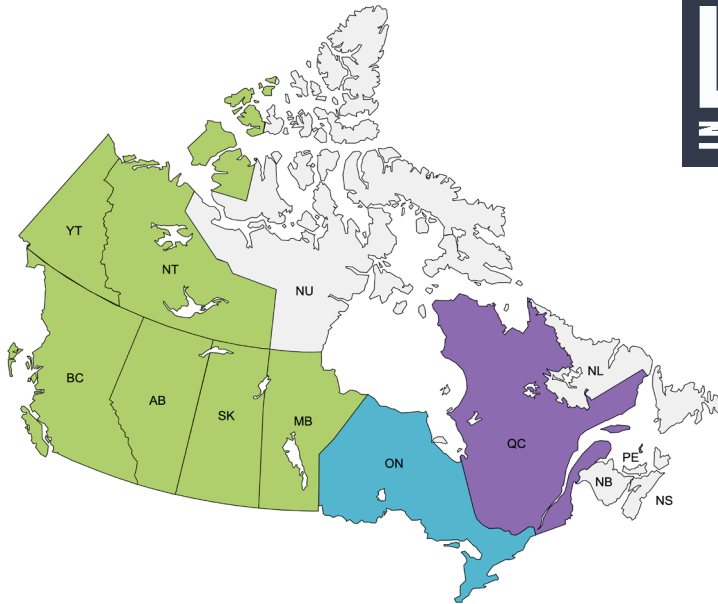
Over the past 15 years, LED in Action has become the trusted brand by North America's heavy industrial plants. Our team of knowledgeable and experienced LED in Action local representatives are passionate about helping you find sustainable solutions for your costliest lighting challenges. If you would like more information on our lights, our pilot project program, or want to connect with one of our sales representatives, get in touch with us today!

**GET IN TOUCH WITH YOUR LOCAL REGIONAL SALES REPRESENTATIVE TODAY:**



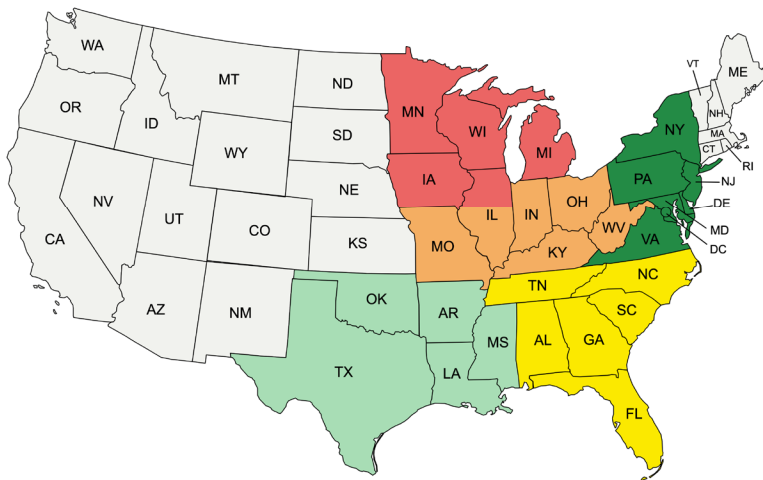
**PHONE: 1-855-264-8600**

**EMAIL: [info@ledinaction.com](mailto:info@ledinaction.com)**



## CANADA

- WESTERN CANADA
- ONTARIO
- QUEBEC

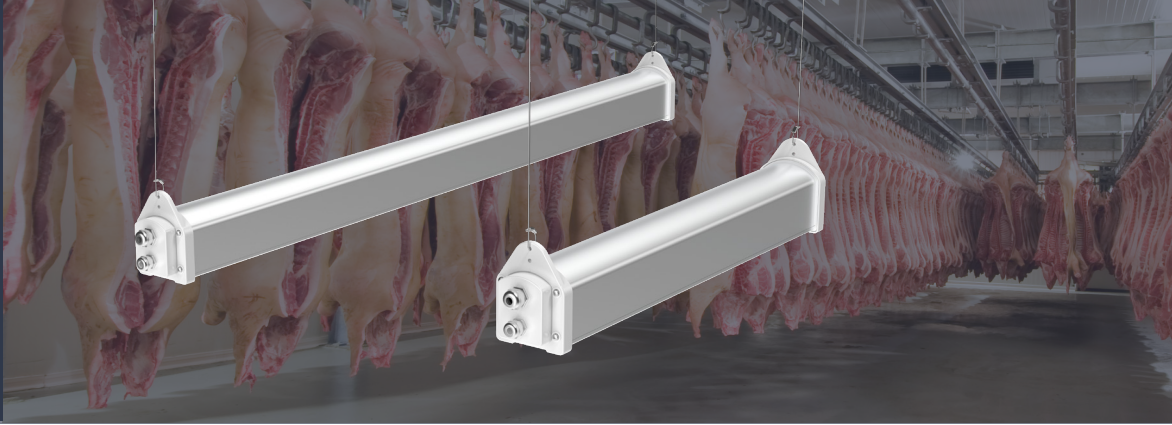


## UNITED STATES

- MIDWEST NORTH
- MIDWEST SOUTH
- NORTHEAST
- US SOUTHEAST
- GULF
- OTHER

**We Sell Exclusively Through Your Distributor Of Choice  
Our Sales Representatives Can Help You Get In Contact With Your Local Distributor**





# PILOT PROJECT PROGRAM TRY 4 LIGHTS FREE FOR 60 DAYS!

**THROUGH PARTNERSHIPS WITH PEOPLE, WE CREATE INNOVATIVE AND RUGGED LIGHTING SOLUTIONS BUILT TO LAST.**

Over the past 14 years, LED in Action has become the trusted brand by North America’s largest heavy industrial plants. Designed specifically for harsh environments, we only source the highest-quality industrial-grade components worldwide. With an unprecedented warranty claim rate of less than 1%, we take pride in our hassle-free warranty program that offers unlimited repairs and replacements within the warranty period. Our warranty includes free freight to and from your plant to our repair facility! We believe that our fixtures are the best in the industry which is why we offer a free 60-day trial program for our lights.

## HOW THE PILOT PROJECT PROGRAM WORKS

The Pilot Project Program is designed to allow you to trial our LED lights risk-free. Our Pilot Project Program has been extremely successful, with the majority of the trials turning into full plant conversions. Multiple customers have said that this is the best Pilot Project Program they have seen in the industry. Here’s how it works:



## TRY OUR LIGHTS FREE TODAY

We are happy to work with you and your supplier of choice to find the best LED lighting solution for your application. Get in touch with our sales reps today to get your free trial started!



**LED**<sup>®</sup> **RUGGED PRODUCTS**  
**IN ACTION** **FOR HARSH ENVIRONMENTS**

1-855-264-8600  
info@ledinaction.com  
www.LEDinAction.com

# Trusted By The Heavy Industrial Sector



[www.LEDinAction.com](http://www.LEDinAction.com)

1-855-264-8600

[info@ledinaction.com](mailto:info@ledinaction.com)

## Canada

**Back To Earth Energy Inc.**

1178 Bighorn Ave  
Box 186  
Pincher Creek, AB  
T0K 1W0

## United States

**LED in Action Inc.**

910 S. Industrial Park Road  
Box 797  
Shelby, MT  
59474



**FIND YOUR EXACT PART NUMBER USING OUR PART NUMBER GENERATOR**

For complete specs and pictures, visit our new part number generator, which includes new 3D drawings, spec sheets, IES files, certifications, dimensions, bracket info & more.

[www.ledinaction.com/part-number-guide](http://www.ledinaction.com/part-number-guide)