

LINEAR FOOD PROCESSING LIGHT

BE-LHB19

The Linear Food Processing Light is designed specifically for food processing applications. This fixture meets or exceeds all NSF inspection zone requirements. The small, slender LED has an IP69K rating for heavy washdown applications or daily sanitation.

Ideal for high bay lighting anywhere the NSF standards are required including inspection areas, wash-down zones, freezers and more.

KEY FEATURES:

- **IP69K** Highest Level of Protection Against Water & High-Pressure Washdown
- **CRI 90** High Colour Rendering for Inspection Zones
- **Sandblasting Oxidation**
- **Built-In 4kV Surge Protection**
- **Corrosion Resistant and Streamlined** Body Design
- **L70 Lifespan of >100,000 Hours**



SPECIFICATIONS

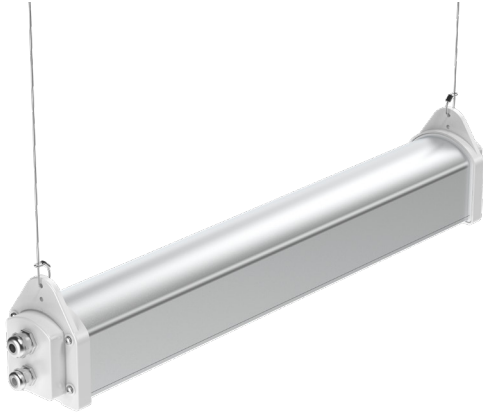
Luminous Efficacy	120lm/W
CCT	3000K, 4000K, 5000K (Standard)
CRI	>Ra 90
Beam Angle	60x90°, 90x100° (Standard)
Input Voltage	100-347Vac
IP Rating	IP69K
L70 Lifespan	>100,000 Hours
LED Driver	WP
Dimming	Dimmable
Chipset	Nichia
Operating Temp.	-30°C ~ +50°C
Warranty	5 Year Warranty
Certifications	NSF, RoHS, DLC, CE, UL, cUL



LUMENS	LED WATTAGE	HID EQUIVALENT
14,400 lm	120W	400W
8,400 lm	70W	200W

MOUNTING OPTIONS

SUSPENSION MOUNT (STANDARD)



CEILING MOUNT

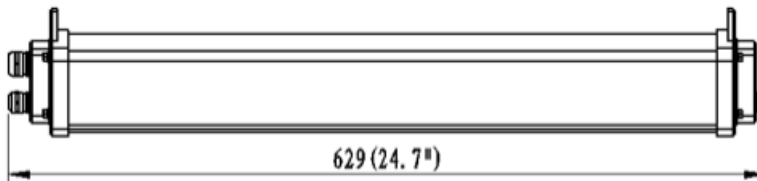
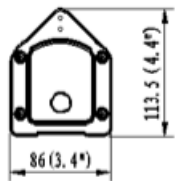


FIXTURE ORDERING MATRIX

Product Name	Wattage	Lens Degree	CCT	Options
BE-LHB19	70W	D60*90	3000K	CM Ceiling Mount SC Safety Cable SGS Surge Suppressor
	120W	D90*100 (Standard)	4000K	
			5000K (Standard)	

Example: BE-LHB19-120W-D90*100-5000K-CM-SC-SGS

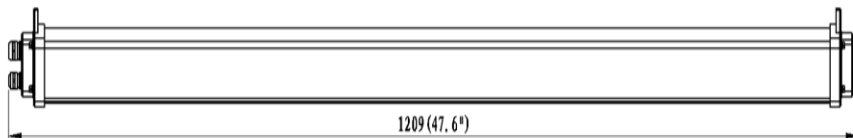
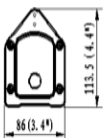
DIMENSIONS & SHIPPING INFORMATION



70W

Fixture Weight: 6 lbs
Fixture Dimensions:
 24.7"x3.4"x4.4"

Shipping Weight: 8 lbs
Box Dimensions:
 27.3"x9.8"x6.5"



120W

Fixture Weight: 9.5 lbs
Fixture Dimensions:
 47.5"x3.4"x4.4"

Shipping Weight: 10.5 lbs
Box Dimensions:
 50.2"x9.8"x6.5"