

# LINEAR FOOD PROCESSING LIGHT

## BE-LHB19

The Linear Food Processing Light is designed specifically for food processing applications. This fixture meets or exceeds all NSF inspection zone requirements. The small, slender LED has an IP69K rating for heavy washdown applications or daily sanitation.

Ideal for high bay lighting anywhere the NSF standards are required including inspection areas, wash-down zones, freezers and more.

### KEY FEATURES:

- **IP69K** Highest Level of Protection Against Water & High-Pressure Washdown
- **CRI 90** High Colour Rendering for Inspection Zones
- **Sandblasting Oxidation**
- **Built-In 4kV Surge Protection**
- **Corrosion Resistant and Streamlined** Body Design
- L70 Lifespan of **>100,000 Hours**
- **Shatterproof** Polycarbonate Lens



### SPECIFICATIONS

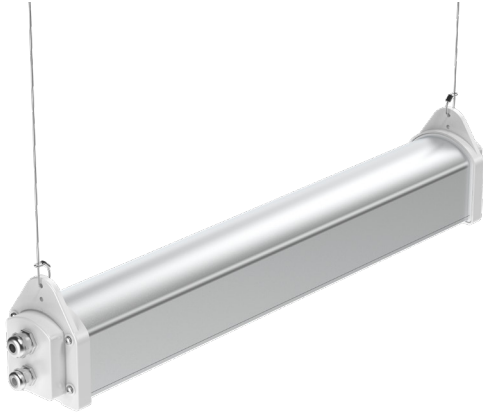
<b>Luminous Efficacy</b>	120lm/W
<b>CCT</b>	3000K, 4000K, 5000K (Standard)
<b>CRI</b>	>Ra 90
<b>Beam Angle</b>	60x90°, 90x100° (Standard)
<b>Input Voltage</b>	100-347Vac
<b>IP Rating</b>	IP69K
<b>L70 Lifespan</b>	>100,000 Hours
<b>LED Driver</b>	WP
<b>Dimming</b>	Dimmable
<b>Chipset</b>	Nichia
<b>Operating Temp.</b>	-30°C ~ +50°C
<b>Warranty</b>	5 Year Warranty
<b>Certifications</b>	NSF, RoHS, DLC, CE, UL, cUL



LUMENS	LED WATTAGE	HID EQUIVALENT
14,400 lm	120W	400W
8,400 lm	70W	200W

## MOUNTING OPTIONS

### SUSPENSION MOUNT (STANDARD)



### CEILING MOUNT

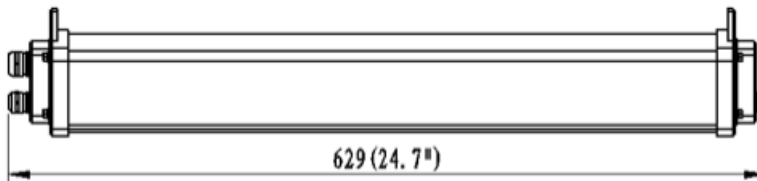
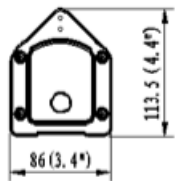


## FIXTURE ORDERING MATRIX

Product Name	Wattage	Lens Degree	CCT	Options
BE-LHB19	70W	D60*90	3000K	<b>CM</b> Ceiling Mount <b>SC</b> Safety Cable <b>SGS</b> Surge Suppressor
	120W	D90*100 (Standard)	4000K	
			5000K (Standard)	

Example: BE-LHB19-120W-D90\*100-5000K-CM-SC-SGS

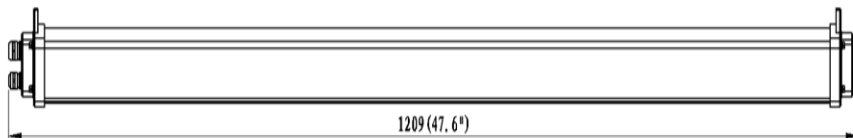
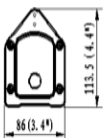
## DIMENSIONS & SHIPPING INFORMATION



### 70W

**Fixture Weight:** 6 lbs  
**Fixture Dimensions:**  
 24.7"x3.4"x4.4"

**Shipping Weight:** 8 lbs  
**Box Dimensions:**  
 27.3"x9.8"x6.5"



### 120W

**Fixture Weight:** 9.5 lbs  
**Fixture Dimensions:**  
 47.5"x3.4"x4.4"

**Shipping Weight:** 10.5 lbs  
**Box Dimensions:**  
 50.2"x9.8"x6.5"