

HIGH TEMP HAZLOC

The HH03 fixture withstands extreme temperatures, explosion and fire hazards, as well as flammable gases and vapours. This driverless LED fixture can withstand temperatures up to 100°C with a CID2 classification rating.

Ideal for high heat environments, petrochemical complexes, painting facilities, offshore platforms, oil and gas complexes, and more.

KEY FEATURES:

- CID2 Group A, B, C, D / CID1 Options Available
- Temp Rating of -40°C ~ +100°C / -40°F ~ +212°F
- 6KV Surge Protection Built-In
- Mounting Options
- Driverless Hazardous LED
- 6' Length UL SOOW 105°C 18AWG Cable
- L70 Lifespan of 60,000 Hours



SPECIFICATIONS

Luminous Efficacy	100lm/W - COB Chip
CCT	3000K, 5000K (Standard)
CRI	>Ra70 (5000K), >Ra80 (3000K)
Beam Angle	>110°
Input Voltage	120V / 230V / 277V
IP Rating	IP67
L70 Lifespan	60,000 Hours
Operating Temp.	30W-60W: -40°C to +100°C / -40°F to +212°F 80W: -40°C to +85°C / -40°F to +185°F
Warranty	66°-85°C - 2 Year Warranty 86°C - 100°C - 1 Year Warranty
Certifications	UL, cUL
Classifications	CID2 Group A, B, C, D Ask About Our CID1 Options



Scan QR Code Now For 2D/3D Drawings, IES Files, Spec Sheets & More

LUMENS	WATTAGE
10,000 lm	100W
8,000 lm	80W
6,000 lm	60W
3,000 lm	30W

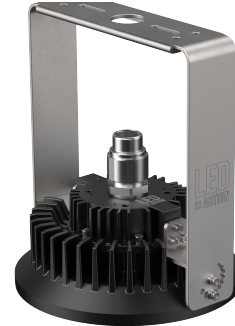
MOUNTING OPTIONS

FEMALE 3/4" NPT



(STANDARD)

ADJUSTABLE WALL/HANGING MOUNT



WHT

APPLETON MERMASTER III™ ADAPTER



ATOP

CROUSE-HINDS™ CHAMP ADAPTER



CTOP

FIXTURE ORDERING MATRIX

Product Name	Wattage	Input Voltage	CCT	Classification	Options
BE-HH03	30W	120V	3000K	CID2	WHT Adjustable Wall/Hanging Mount
	60W				NPT Female 3/4" NPT Mount (Standard)
	80W	230V			ATOP Appleton Mercmaster III™ Adapter
	100W	277V			CTOP Crouse-Hinds™ Champ Adapter
					SGS Surge Suppressor

Example: BE-HH03-30W-120V-5000K-CID2-WHT-SGS