

CLEARANCE

LED LIGHTING CATALOG 2026

www.LEDinAction.com

V1



Ships from Canada

1 Year Warranty Unless Otherwise Noted



NSF Lighting



Hazloc Lighting



277-480 Volt Lighting



**RUGGED PRODUCTS
FOR HARSH ENVIRONMENTS**

TABLE OF CONTENTS



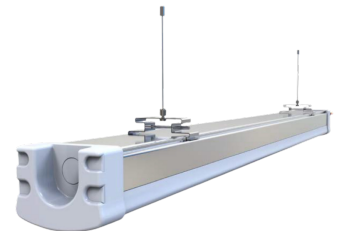
NSF FOOD PROCESSING LIGHTING 3



EXP HAZLOC LIGHTING 7



HIGH VOLT 277-480VAC LIGHTING 13



MISC. LIGHTING 17



NSF FOOD LIGHTING

NSF FOOD LIGHTING

HICLEAN

BE-HB06

NSF-rated LED lighting engineered for clean, demanding environments requiring reliable and hygienic illumination. Available in 4000K and 5000K colour temperatures with a 90 CRI option for inspection zones and quality-control areas. Designed for dependable operation in harsh conditions with an operating temperature range of -30°C to +50°C.

Ideal lighting for food processing applications, chemical processing facilities, pharmaceutical manufacturing, factories, and commercial spaces.

KEY FEATURES:

- Up to 23,000 Lumens at 115lm/W
- Loop Hanging Mount
- Temp Rating -30°C to +50°C
- 4000K and 5000K Options Available
- Rating of CRI 90
- NSF Rated



SPECIFICATIONS

Luminous Efficacy	115 lm/W
CCT	4000K & 5000K
CRI	>Ra 90
Beam Angle	120°
Input Voltage	LV: 100-240Vac HV: 277-480Vac
IP Rating	IP66
Operating Temp.	-30°C ~ +50°C / -22°F ~ +122°F

Certifications NSF, DLC, UL, cUL

LUMENS	LED WATTAGE	STOCK
11,500 lm	100W	LV - Only 34 Left HV- Only 3 Left
13,800 lm	120W	LV - Only 18 Left HV- Only 8 Left
17,250 lm	150W	LV - Only 6 Left HV- Only 3 Left
23,000 lm	200W	LV - Only 20 Left

FIXTURE ORDERING MATRIX

Product Name	Wattage	Lens Degree	Input Voltage	CCT
BE-HB06	100W	D120	LV 100-240Vac HV 277-480Vac	4000K
	120W			5000K
	150W			
	200W			

Example: BE-HB06-100W-D120-LV-5000K

NSF FOOD LIGHTING

FOOD PROCESSING LIGHT

BE-HCP06

NSF-rated LED fixture built for sanitary environments requiring high-performance illumination and maximum durability. Featuring 90 CRI lighting for enhanced visibility and inspection accuracy with an IP69K rating for demanding washdown environments.

Ideal lighting for food processing facilities, washdown areas, pharmaceutical manufacturing, commercial kitchens, and other hygiene-sensitive applications.

KEY FEATURES:

- Temp Rating -30°C to +50°C
- Available in 4000K Colour Temperature
- Rating of CRI 90
- IP Rating of IP69K for Washdown Environments
- NSF Rated



SPECIFICATIONS

Luminous Efficacy	125 lm/W
CCT	4000K
CRI	>Ra 90
Beam Angle	120°
Input Voltage	LV: 100-277Vac HV: 277-480Vac
IP Rating	IP69K
Operating Temp.	-30°C ~ +50°C / -22°F ~ +122°F
Certifications	NSF, DLC, UL, cUL

LUMENS	LED WATTAGE	STOCK
8,750 lm	70W	LV - Only 23 Left
14,000 lm	100W	LV - Only 16 Left
16,800 lm	120W	LV - Only 28 Left HV- Only 8 Left
21,000 lm	150W	LV - Only 22 Left

FIXTURE ORDERING MATRIX

Product Name	Wattage	Lens Degree	Input Voltage	CCT
BE-HCP06	70W 100W 120W 150W	D120	LV 100-277Vac HV 277-480Vac	4000K

Example: BE-HCP06-70W-D120-LV-4000K

NSF FOOD LIGHTING

LINEAR FOOD PROCESSING LIGHT

BE-LHB19

The Linear Food Processing Light is designed specifically for food processing applications. This fixture meets or exceeds all NSF inspection zone requirements. The small, slender LED has an IP69K rating for heavy washdown applications or daily sanitation.

Ideal lighting for anywhere NSF standards are required, including, inspection areas, wash-down zones, freezers, and other hygiene-sensitive applications.

KEY FEATURES:

- IP69K Protection Against Water & Washdown
- CRI 90
- NSF Rated
- Corrosion Resistant & Streamlined Body Design
- L70 Lifespan of 100,000 Hours
- 70W-2FT / 120W-4FT
- Suspension Mount



SPECIFICATIONS

Luminous Efficacy	120 lm/W
CCT	4000K
CRI	>Ra 90
Beam Angle	60x90°, 90x100°
Input Voltage	LV: 100-347Vac
IP Rating	IP69K
Operating Temp.	-30°C ~ +50°C / -22°F ~ +122°F
Certifications	NSF, DLC, UL, cUL

LUMENS	LED WATTAGE	STOCK
8,000 lm	70W	Only 103 Left
14,400 lm	120W	Only 88 Left

FIXTURE ORDERING MATRIX

Product Name	Wattage	Lens Degree	CCT	Options
BE-LHB19	70W (2FT) 120W (4FT)	D60°x90°	4000K 5000K	CM Ceiling Mount
	70W (2FT)	D90°x100°	4000K	

Example: BE-LHB19-70W(2FT)-D6090-4000K



EXP HAZLOC LIGHTING

HAZLOC LIGHTING

WARRIOR

BE-EXP-WR

Warrior Hazardous Location LED lighting engineered for demanding industrial and hazardous environments requiring reliable, heavy-duty illumination. Certified for CID2, CIID1, CIID2, applications. Available in two wattage options and supplied with a mounting bracket for versatile installation. Designed for dependable operation in extreme conditions with an operating temperature range of -40°C to +55°C.

Ideal lighting for oil & gas facilities, chemical plants, manufacturing sites, and other hazardous locations

KEY FEATURES:

- CID2, CIID1, CIID2 Rated
- Rated IP66 For Outdoor Use
- Temp Rating of -40°C ~ +55°C
- Bracket Included



SPECIFICATIONS

Luminous Efficacy	150 lm/W
CCT	5000K
CRI	>Ra 70
Beam Angle	110°
Input Voltage	LV: 100-277Vac
IP Rating	IP66
Operating Temp.	-40°C ~ +55°C / -40°F ~ +131°F
Classifications	CID2, CIID1, CIID2
Certifications	UL, cUL

LUMENS	LED WATTAGE	STOCK
6,750 lm	45W	Only 8 Left
9,750 lm	60W	Only 21 Left

FIXTURE ORDERING MATRIX

Product Name	Wattage	Lens Degree	Input Voltage	CCT
BE-EXP-WR	45W	D110	LV 100-277Vac	5000K
	65W			

Example: BE-EXP-WR-40W-D110-LV-5000K

HAZLOC LIGHTING

1705

BE-EXP-1705

Hazardous location LED lighting designed for reliable performance in demanding industrial environments. Built to provide dependable illumination in hazardous areas while delivering long-lasting, energy-efficient performance.

Ideal lighting for oil refinery complexes, petrochemical facilities, painting operations, natural gas transportation sites, and offshore oil and gas platforms

KEY FEATURES:

- CID2, CIID1 Rated
- Rated IP67 for Outdoor Use
- Temp Rating of -40°C ~ +40°C



SPECIFICATIONS

Luminous Efficacy	100 lm/W
CCT	5000K
CRI	>Ra 70
Beam Angle	110°
Input Voltage	120V
IP Rating	IP67
Operating Temp.	-40°C ~ +40°C / -40°F ~ +104°F
Classifications	CID2, CIID1
Certifications	UL, cUL

LUMENS	LED WATTAGE	STOCK
4,000 lm	40W	Only 3 Left
8,000 lm	80W	Only 10 Left

FIXTURE ORDERING MATRIX

Product Name	Wattage	Lens Degree	Input Voltage	CCT	Classification
BE-EXP-1705	40W	D110	120V	5000K	CID2 / CIID1
	80W				

Example: BE-EXP-1705-40W-D110-120V-5000K-CID2

HAZLOC LIGHTING

H SERIES

BE-EXP-H

The H-Series linear fixture withstands explosion and fire hazards, as well as flammable gases and vapours. This hazardous location LED light has CID2, CIID1, CIID2, and CIII classification ratings.

Ideal lighting for hazardous environments, petrochemical complexes, painting facilities, offshore platforms, oil and gas complexes, and more.

KEY FEATURES:

- CID2, CIID1, CIID2, CIII
- Bracket Mount
- MeanWell Driver
- Up to 28,000 Lumens



SPECIFICATIONS

Luminous Efficacy	140 lm/W
CCT	5000K
CRI	>Ra 70
Input Voltage	LV: 100-277Vac
IP Rating	IP66
Operating Temp.	-40°C ~ +60°C / -40°F ~ +140°F
Classifications	CID2, CIID1, CIID2, CIII
Certifications	UL, cUL

LUMENS	LED WATTAGE	STOCK
8,400 lm	60W	Only 1 Left
28,000 lm	200W	Only 4 Left

FIXTURE ORDERING MATRIX

Product Name	Wattage	Input Voltage	CCT	Classifications
BE-EXP-H	60W 200W	LV 100-277Vac	5000K	CID2 / CIID1 / CIID2 / CIII

Example: BE-EXP-B-100W-LV-5000K-CID2

HAZLOC LIGHTING

1102

BE-EXP-1102

The 1102 fixture withstands explosion and fire hazards, as well as flammable gases and vapours. This hazardous location LED light has CID2 classification ratings.

Ideal lighting for hazardous environments, petrochemical complexes, painting facilities, offshore platforms, oil and gas complexes, and more.

KEY FEATURES:

- CID2 Rated
- 10,000 Lumens
- Rated IP67 for Outdoor Use
- Temp Rating of -40°C ~ +65°C



SPECIFICATIONS

Luminous Efficacy	100 lm/W
CCT	5000K
CRI	>Ra 70
Beam Angle	110°
Input Voltage	277V / 480V
IP Rating	IP67
Operating Temp.	-40°C ~ +100°C / -40°F ~ +149°F
Classifications	CID2
Certifications	UL, cUL

LUMENS	LED WATTAGE	STOCK
8,000 lm	80W	Only 4 Left
10,000 lm	100W	Only 5 Left

FIXTURE ORDERING MATRIX

Product Name	Wattage	Input Voltage	CCT	Classification
BE-EXP-1102	80W	480V	5000K	CID2
	100W	277V		

Example: BE-EXP-1102(COB)-100W-277V-5000K-CID1

HAZLOC LIGHTING

1217E

BE-EXP-1217E

The 1217E fixture withstands extreme temperatures, explosion and fire hazards, as well as flammable gases and vapours. This driverless LED fixture can withstand temperatures up to 85°C with CID1/CIID1 and CID2 classification ratings.

Ideal lighting for high heat environments, petrochemical complexes, painting facilities, offshore platforms, oil and gas complexes, and more.

KEY FEATURES:

- CID1, CIID1, CID2
- Temperature Rating of -40°C ~ +85°C
- 6KV Surge Protection Built-In
- Tempered Glass Lens
- Driverless Hazardous LED



SPECIFICATIONS

Luminous Efficacy	100 lm/W
CCT	5000K
CRI	>Ra 80
Input Voltage	120V, 277V
IP Rating	IP68
Operating Temp.	-40°C ~ +85°C / -40°F ~ +185°F
Classifications	CID2
Certifications	UL, cUL

LUMENS	LED WATTAGE	STOCK
12,000 lm	120W	Only 8 Left
14,000 lm	140W	120V - Only 6 Left 277V - Only 2 Left

FIXTURE ORDERING MATRIX

Product Name	Wattage	Input Voltage	CCT	Classifications
BE-EXP-1217E	120W 140W	120V 277V	5000K	CID2

Example: BE-EXP-1217E-120W-120V-5000K-CID2



HIGH VOLT LIGHTING

HIGH BAY - HIGH VOLTAGE SUPERLUX

BE-HB17

The most compact 1000 watt HID equivalent on the market! At 96,000lm the Superlux series can deliver ample lumens up to 130' mounting heights. Install it anywhere with our universal mounting options including overhead cranes, high bay, flood/area lighting, and outdoor pole/mast lighting.

Ideal lighting for high-ceiling applications or crane lighting where a high lumens are needed.

KEY FEATURES:

- 96,000 Lumens & 160 lm/W
- Cascading Surge Protection options available for 20kA at luminaire and 50kA at panel
- IP66 & Universal Mounting Options For Any Industrial Application Inside & Out At Your Facility



SPECIFICATIONS

Luminous Efficacy	160 lm/W
CCT	5000K
CRI	>Ra 70
Beam Angle	120°
Input Voltage	HV: 277-480Vac
IP Rating	IP66
L70 Lifespan	>100,000 Hours
Operating Temp.	-30°C ~ +65°C / -22°F ~ +149°F
Certifications	DLC, UL, cUL

LUMENS	LED WATTAGE	STOCK
96,000 lm	600W	Only 11 Left

FIXTURE ORDERING MATRIX

Product Name	Wattage	Lens Degree	Input Voltage	CCT	Options
BE-HB17	600W	D120	HV 277-480Vac	5000K	EXTERNAL DRIVER

Example: BE-HB17-600W-D120-HV-5000K-EXTERNAL DRIVER

HIGH BAY - HIGH VOLTAGE

CHB HIGH BAY

BE-CHB

The CHB is a low-profile, durable fixture designed to quickly and easily upgrade existing HID and fluorescent fixtures. With a superior chipset, driver and high lumen output of 140lm/W, the CHB is built to reduce lighting maintenance and downtime by replacing up to 250W metal halide fixtures.

Ideal lighting for high-ceiling applications or crane lighting where a high lumens are needed.

KEY FEATURES:

- Up to 45,000 Lumens at 140lm/W
- Loop Hanging Mount
- Temp Rating -30°C to +65°C
- Low Profile Durable High Bay
- Also available in LV options (See High Bay - Low Voltage Section)



SPECIFICATIONS

Luminous Efficacy	140 lm/W
CCT	4000K & 5000K
CRI	>Ra 70
Beam Angle	120°
Input Voltage	HV: 277-480Vac SHV: 600Vac
IP Rating	IP65
L70 Lifespan	>100,000 Hours
Operating Temp.	-30°C ~ +65°C / -22°F ~ +149°F
Certifications	DLC, UL, cUL

LUMENS	LED WATTAGE	STOCK
14,000 lm	100W	Only 68 Left
16,800 lm	120W	Only 13 Left
21,000 lm	150W	Only 31 Left
28,000 lm	200W	Only 6 Left
36,000 lm	240W	SHV-Only 47 Left
45,000 lm	300W	SHV-Only 51 Left

FIXTURE ORDERING MATRIX

Product Name	Wattage	Lens Degree	Input Voltage	CCT	Options
BE-CHB	100W	D120	HV 277-480Vac SHV 600Vac	4000K	Available in LV See High Bay - Low Voltage Section
	120W				
	150W				
	200W			5000K	
	240W				
	300W				

Example: BE-CHB-100W-D120-HV-5000K

HIGH BAY - HIGH VOLTAGE

HIPRO

BE-HB12

Versatile high-voltage LED High Bay fixture designed for efficient illumination in commercial and industrial environments. Available in 150W and 200W models with outputs up to 25,000 lumens. This fixture has an operating temperature up to 65°C/149°F.

This white-housing fixture is ideal for warehouses, distribution centres, manufacturing plants, and other large applications requiring dependable, high-output lighting performance.

KEY FEATURES:

- Up to 25,000 Lumens at 125lm/W
- Loop Hanging Mount
- Temp Rating -30°C to +65°C
- Black or White Housing Available Depending on Wattage
- Also available in LV options (See High Bay - Low Voltage Section)



SPECIFICATIONS

Luminous Efficacy	125 lm/W
CCT	5000K
CRI	>Ra 70
Beam Angle	120°
Input Voltage	HV: 277-480Vac
IP Rating	IP65
Operating Temp.	-30°C ~ +65°C / -22°F ~ +149°F
Certifications	DLC, UL, cUL

LUMENS	LED WATTAGE	STOCK
12,500 lm	100W	Only 3 Left
18,750 lm	150W	Only 59 Left
25,000 lm	200W	Only 7 Left

FIXTURE ORDERING MATRIX

Product Name	Colour	Wattage	Lens Degree	Input Voltage	CCT	Options
BE-HB12	WHITE BLACK	150W 200W	D120	HV 277-480Vac	5000K	Available in LV See High Bay - Low Voltage Section

Example: BE-HB12-BLACK-150W-D120-HV-5000K



MISC. LIGHTING

HIGH BAY - LOW VOLTAGE

WAREHOUSE HIGH BAY

BE-WHB

High-performance LED High Bay lighting designed for large indoor spaces requiring reliable, efficient illumination. Available in 100W, 120W, 150W, and 200W models with outputs up to 28,000 lumens. Durable construction, energy-efficient performance, and wide-area light distribution make this fixture a dependable solution for commercial and industrial environments.



Ideal lighting for warehouses, arenas, distribution centres, shopping centres, manufacturing facilities, and other high-ceiling applications.

KEY FEATURES:

- Up to 28,000 Lumens at 140lm/W
- Loop Hanging Mount
- Temp Rating -30°C to +45°C
- ALU Reflector Option for 150W-240W

SPECIFICATIONS

Luminous Efficacy	140 lm/W
CCT	5000K
CRI	>Ra 70
Beam Angle	120°
Input Voltage	LV: 100-277Vac
IP Rating	IP65
L70 Lifespan	>50,000 Hours
Operating Temp.	-30°C ~ +45°C / -22°F ~ +113°F
Certifications	DLC, ETL, UL, cUL

LUMENS	LED WATTAGE	STOCK
14,000 lm	100W	Only 5 Left
16,800 lm	120W	Only 5 Left
21,000 lm	150W	Only 23 Left
28,000 lm	200W	Only 1 Left

FIXTURE ORDERING MATRIX

Product Name	Wattage	Lens Degree	Input Voltage	CCT	Options
BE-WHB	100W 120W 150W 200W	D120	LV 100-277Vac	5000K	ALU Reflector (150W & 200W Only)

Example: BE-WHB-100W-D120-LV-5000K

HIGH BAY - LOW VOLTAGE

HIPRO

BE-HB12

Versatile low-voltage LED High Bay fixture designed for efficient illumination in commercial and industrial environments. Available in 150W and 200W models with outputs up to 25,000 lumens. This fixture has an operating temperature up to 65°C/149°F.

This white-housing fixture is ideal for warehouses, distribution centres, manufacturing plants, and other large applications requiring dependable, high-output lighting performance.

KEY FEATURES:

- Up to 25,000 Lumens at 125lm/W
- Loop Hanging Mount
- Temp Rating -30°C to +65°C
- White Housing
- Also available in HV options (See High Bay - High Voltage Section)



SPECIFICATIONS

Luminous Efficacy	125 lm/W
CCT	5000K
CRI	>Ra 70
Beam Angle	120°
Input Voltage	LV: 100-277Vac
IP Rating	IP65
Operating Temp.	-30°C ~ +65°C / -22°F ~ +149°F
Certifications	DLC, ETL, UL, cUL

LUMENS	LED WATTAGE	STOCK
18,750 lm	150W	Only 6 Left
25,000 lm	200W	Only 10 Left

FIXTURE ORDERING MATRIX

Product Name	Colour	Wattage	Lens Degree	Input Voltage	CCT	Options
BE-HB12	WHITE	150W 200W	D120	LV 100-277Vac	5000K	Available in HV See High Bay - High Voltage Section

Example: BE-HB12-WHITE-150W-D120-LV-5000K

HIGH BAY - LOW VOLTAGE

CHB HIGH BAY

BE-CHB

The CHB is a low-profile, durable fixture designed to quickly and easily upgrade existing HID and fluorescent fixtures. With a superior chipset, driver and high lumen output of 140lm/W, the CHB is built to reduce lighting maintenance and downtime by replacing up to 250W metal halide fixtures.

Ideal lighting for high-ceiling applications or crane lighting where a high lumens are needed.

KEY FEATURES:

- Up to 45,000 Lumens at 140lm/W
- Loop Hanging Mount
- Temp Rating -30°C to +65°C
- Low Profile Durable High Bay
- Also available in HV options (See High Bay - High Voltage Section)



SPECIFICATIONS

Luminous Efficacy	140 lm/W
CCT	4000K & 5000K
CRI	>Ra 70
Beam Angle	120°
Input Voltage	LV: 100-277Vac
IP Rating	IP65
L70 Lifespan	>100,000 Hours
Operating Temp.	-30°C ~ +65°C / -22°F ~ +149°F
Certifications	DLC, UL, cUL

LUMENS	LED WATTAGE	STOCK
14,000 lm	100W	Only 4 Left
16,800 lm	120W	Only 3 Left
21,000 lm	150W	Only 2 Left
28,000 lm	200W	Only 4 Left

FIXTURE ORDERING MATRIX

Product Name	Wattage	Lens Degree	Input Voltage	CCT	Options
BE-CHB	100W 120W 200W	D120	LV 100-277Vac	4000K 5000K	Available in HV See High Bay - High Voltage Section

Example: BE-CHB-100W-D120-LV-5000K

LINEAR FIXTURES

TUBE LIGHTS

BE-TUBE

LED tube lighting that provides dependable performance while reducing maintenance and energy costs. Operating on 100–277VAC with a 110° beam angle and 5000K colour temperature for bright, consistent illumination. T5 and T8 tube options are also available to suit a variety of existing fixture types and installation requirements.

Ideal lighting for everyday illumination in commercial, industrial, and institutional applications. Suitable for offices, warehouses, schools, retail spaces, workshops, and maintenance areas



SPECIFICATIONS

Wattage	15W
Lumen Output	1,950 lm
Luminous Efficacy	130 lm/W
Input Voltage	LV: 100-277Vac
CCT	5000K
CRI	>Ra80
Operating Temp.	-30°C ~ 60°C / -22°F ~ +140°F
Certifications	DLC, ETL

TYPE	STOCK
15W	Only 280 Left
T5	Only 6 Left
T8	Only 4 Left

FIXTURE ORDERING MATRIX

Product Name	Type	Input Voltage	CCT
BE-TUBE	15W	LV 100-277Vac	5000K
	T5		
	T8		

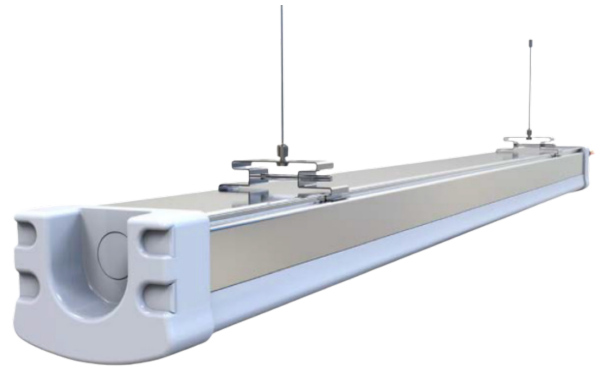
Example: BE-TUBE-T5-LV-5000K

LINEAR FIXTURES

TRI-PROOF

BE-SL-A65

Durable linear LED tri-proof fixture designed for reliable performance in commercial and industrial environments. Available in 30W, 50W, and 60W models with in 3000K, 5000K, or 6500K colour temperatures to suit a variety of lighting needs. Includes suspension mounting hardware for versatile installation options.



Ideal lighting for parking lots, airports, corridors, galleries, supermarkets, and other high-traffic applications requiring dependable illumination.

KEY FEATURES:

- Three Wattages Available
- Suspension Mount
- Temp Rating -20°C to +50°C
- Low Profile Linear LED

SPECIFICATIONS

Luminous Efficacy	120 lm/W
CCT	3000K, 5000K & 6500K
CRI	>Ra 82
Beam Angle	120°
Input Voltage	LV: 100-277Vac
IP Rating	IP66
Size	2 FT or 4FT
Operating Temp.	-20°C ~ +50°C / -4°F ~ +122°F
Certifications	DLC, UL, cUL

LUMENS	LED WATTAGE	STOCK
3,600 lm	30W (2FT)	Only 5 Left
6,000 lm	50W (4FT)	Only 62 Left
7,200 lm	60W (4FT)	Only 4 Left

FIXTURE ORDERING MATRIX

Product Name	Wattage & CCT	Input Voltage
BE-SL-A65	30W-3000K 50W-5000K 60W-5000K 60W-6500K	LV 100-277Vac

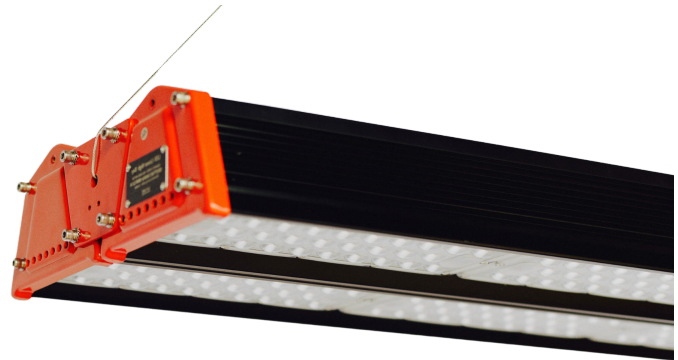
Example: BE-SL-A65-50W-5000K-LV

LINEAR FIXTURES

HIRACK

BE-LHB01

The HiRack Linear LED is engineered for efficient aisle and warehouse illumination. This fixture is designed to replace traditional HID, T5, and T8 fluorescent lighting systems with improved energy efficiency and performance. The HiRack delivers even, uniform lighting for narrow warehouse aisles and high shelving.



Ideal lighting for warehouses, storage aisles, parking areas, and industrial facilities.

KEY FEATURES:

- Up to 23,400 Lumens
- Suspension Mount
- Temp Rating -30°C to +50°C
- 4000K & 5000K

SPECIFICATIONS

Luminous Efficacy	130lm/W
CCT	4000K & 5000K
CRI	>Ra 70
Input Voltage	LV: 100-277Vac
IP Rating	IP65
Operating Temp.	-30°C ~ +50°C / -22°F ~ +122°F
Certifications	DLC, UL, cUL

LUMENS	LED WATTAGE	STOCK
7,800 lm	60W	Only 3 Left
15,600 lm	120W	Only 2 Left
19,500 lm	150W	Only 4 Left
23,400 lm	180W	Only 3 Left

FIXTURE ORDERING MATRIX

Product Name	Wattage	Input Voltage	CCT
BE-LHB01	60W	LV 100-277Vac	4000K
	120W		
	150W		5000K
	180W		

Example: BE-LHB01-180W-LV-5000K

STREET LIGHTS

HISMOOTH

BE-ST03

The HiSmooth LED street lighting built for efficient and reliable outdoor area illumination. This fixture provides consistent lighting performance with a clean, modern design. Features an adjustable-angle mounting for flexible installation and precise light positioning to meet a variety of site requirements.



Ideal lighting for parking lots, sidewalks, roadways, and other large outdoor areas requiring efficient, wide-area lighting coverage.

KEY FEATURES:

- Angle Adjustable
- Temp Rating -30°C to +50°C
- 4000K

SPECIFICATIONS

Luminous Efficacy	130lm/W
CCT	4000K
CRI	>Ra 70
Input Voltage	LV: 100-277Vac
IP Rating	IP66
Operating Temp.	-30°C ~ +50°C / -22°F ~ +122°F
Certifications	DLC, UL, cUL

LUMENS	LED WATTAGE	STOCK
11,700 lm	90W	Only 4 Left
15,600 lm	120W	Only 2 Left

FIXTURE ORDERING MATRIX

Product Name	Wattage	Input Voltage	CCT
BE-ST03	90W	LV 100-277Vac	4000K
	120W		

Example: BE-ST03-90W-LV-4000K

WALL PACKS

VARIETY

BE-WP

Versatile LED wall pack lighting solutions designed for dependable exterior illumination in commercial and industrial applications. Available in a wide range of styles and configurations with wattages from 25W to 135W, including both low-voltage and high-voltage input options. Select models offer adjustable wattage outputs and selectable colour temperatures of 3000K, 4000K, or 5000K for added installation flexibility and customized lighting performance.



Ideal lighting for building perimeters, entrances, loading docks, walkways, security lighting, and outdoor facility lighting, wall packs provide reliable visibility and added site safety.

FIXTURE ORDERING MATRIX				
PRODUCT	WATTAGE	INPUT VOLTAGE	CCT	STOCK
BE-WP	25W	LV 100-277V	5000K	Only 3 Left
	30W	LV 100-277V	5000K	Only 10 Left
	40W	LV 100-277V	4000K	Only 20 Left
	40W	LV 100-277V	5000K	Only 3 Left
	45W	LV 100-277V	4000K	Only 4 Left
	62W (27W/45W/62W)	LV 100-277V	3000K/4000K/5000K	Only 10 Left
	70W	LV 100-277V	5000K	Only 8 Left
	90W	LV 100-277V	5000K	Only 7 Left
	90W	HV 277-480V	5000K	Only 10 Left
	100W (70W/100W)	LV 100-277V	3000K/4000K/5000K	Only 9 Left
	125W	LV 100-277V	4000K	Only 19 Left
	125W	LV 100-277V	5000K	Only 1 Left
	135W	LV 100-277V	5000K	Only 2 Left
Example: BE-WP-25W-LV-5000K				

WORK LIGHTS

PRO CIRCLE WORK LIGHT

BE-RC-03

The RC-03 is a work light with a built in extension cord and plug. It comes with an wide angle beam with easy directional adjustment.

Ideal for any environment where extra lighting is required; construction sites, warehouses, garages, and more!



Only 196 Left

SPECIFICATIONS

Lumens	3,400 lm
CCT	6500K
Cable Length	10 m
Angle	Wide
IP	IP54
Weight	3.1 kg
Measurements	305x50mm

HEADLAMP

BE-HEADLAMP

Our LED headlamp is the perfect hands-free light. Comes with a rechargeable battery, adjustable head harness, and is waterproof!

Ideal for any activity where handsfree lighting is required; working, climbing, fishing, cycling, camping, hiking.



Only 105 Left

SPECIFICATIONS

Lumens	200 lm
Power Source	18650 Rechargeable Lithium Batter x2
Features	Waterproof, Adjustable Focus
Certifications	CE / IP65
Weight	98g
Irradiation Distance	500m
Switch Modes	High / Low / Flash

DRIVER

MEANWELL DRIVER

BE-WDR-240-480-200-500AC

Mean Well 240W Industrial DIN Rail Power Supply designed for reliable power distribution in demanding industrial and automation applications. Featuring a wide 180–550VAC input range, high efficiency, and built-in active PFC, this power supply delivers dependable performance while minimizing energy consumption.



Only 114 Left

SPECIFICATIONS		
OUTPUT	DC VOLTAGE	48V
	RATED CURRENT	5A
	CURRENT RANGE	0 ~ 5A
	RATED POWER	240W
	RIPPLE & NOISE (max.)	150mVp-p
	VOLTAGE ADJ RANGE	48 ~ 55V
	VOLTAGE TOLERANCE	± 1.0%
	LINE REGULATION	± 0.5%
	LOAD REGULATION	± 1.0%
	SET, RISE TIME	800 ms, 150ms/400VAC 1500ms, 150ms/230VAC at full load
	HOLD UP TIME (Typ.)	18ms/400VAC 18ms/230VACC at full load
INPUT	VOLTAGE RANGE	180~550VAC 254~780 VDC
	FREQUENCY RANGE	47~63Hz
	POWER FACTOR (Typ.)	PF ≥ 0.84/400VAC PF ≥ 0.84/230VAC
	EFFICIENCY (Typ.)	91%
	AC CURRENT (Typ.)	1A/400VAC 2A/230VAC
	INRUSH CURRENT (Typ.)	COLD START 50A
	LEAKAGE CURRENT	<3.5mA / 530VAC
PROTECTION	OVERLOAD	105~130% rated output power Protection Type: Constant current limiting, unit will shut down after 3 sec., auto-recovery after 1 minute if the fault condition is removed
	OVER VOLTAGE	56~65V Protection Type: Shut down o/p voltage, auto-recovery after 1 minute if the fault condition is removed
	OVER TEMPERATURE	90°C ± 5°C (TSW) detect on heatsink of power switch Protection Type: Shut down o/p voltage, recovers automatically after temperature goes down
FUNCTION	DC OK REALY CONTACT RATINGS	60Vdc/0.3A, 30Vdc/1A, 30Vac/0.5A resistive load
ENVIRONMENT	WORKING TEMP	-30°C ~ +70°C
	WORKING HUMIDITY	20~95% RH non-condensing
	TEMP. COEFFICIENT	±.03%/°C (0~50°C)
	VIBRATION	10~500Hz, 2G 10min./1cycle, 60min. each along X,Y,Z axes; Mounting: Compliance to IEC60068-2-6
SAFETY & EMC	SAFETY STANDARDS	UL508, EAC TP TC 004, BIS IS13252(Part 1):2010/IEC 609501:2005(except for 48) approved, IEC62368-1 CB approved by SIQ, design refer to BS EN/EN62368-1, AS/NZS 62368.1, GL;(meet BS EN/EN60204-1)
	WITHSTAND VOLTAGE	I/P-O/P:3KVAC I/P-FG:2KVAC O/P-FG:0.5KVAC O/P-DC OK:0.5KVAC
	ISOLATION RESISTANCE	I/P-O/P, I/P-FG, O/P-FG:>100M Ohms /500VDC/25°C/70%RH
	EMC EMISSION	Compliance to BS EN/EN55032 (CISPR32), BS EN/EN61204-3 Class B, BS EN/EN61000-3-2, EAC TP TC 020
	EMC IMMUNITY	Compliance to BS EN/EN61000-4-2,3,4,5,6,8,11, BS EN/EN55035, BS EN/EN61000-6-2 (BS EN/EN50082-2), BS EN/EN61204-3, heavy industry level, EAC TP TC 020 approved

SHOP OUR CLASSICS

Explore a curated selection of trusted LED lighting solutions from past collections. Now available at clearance pricing while quantities last. These proven products continue to deliver the performance and reliability you expect, offering a great opportunity to secure quality lighting at exceptional value.

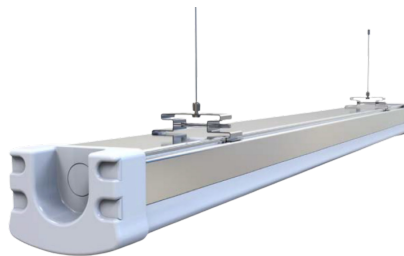


1-855-264-8600

info@ledinaction.com



Work Lights



Industrial Lighting



High Bay Lighting

TRUSTED INDUSTRIAL LIGHTING:

- High Bay Lighting
- Industrial Lighting
- Hazloc Lighting
- Shoebox Lighting
- High-Temp Lighting
- Wall Packs
- NSF Food Lights
- High Voltage Lighting
- Work Lights