

**UNIVERSAL HAZLOC LED**  
**CID2/CIID1/CIID2/CIII**

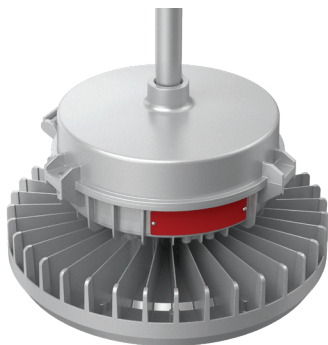
The EXP-RD05 fixture is hazardous rated with NEMA 4X and marine grade ratings suitable for indoor or outdoor harsh environments. This LED fixture has classification ratings of CID2, CIID1, CIID2, and CIII.

Ideal for petrochemical complexes, painting facilities, offshore platforms, oil and gas refineries, and more.

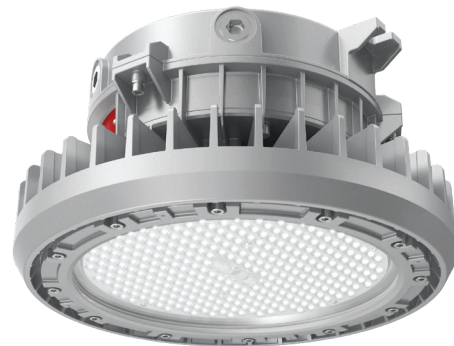
**KEY FEATURES:**

- CID2, CIID1, CIID2, CIII / Inquire for CID1 Options
- IP66 / NEMA 4X
- UL1589A Marine Grade
- HV up to 480 Vac
- Temp Rating of -40°C up to +65°C / -40°F ~ +149°F
- Dual Cable Entry Option for Daisy Chain Connect
- Battery Backup 9W for 1.5 Hours (50W Only)
- 6 Easily Interchangeable Mounting Options
- Built in 10kA Surge Protection

*Ask About Our Battery Backup Options*



Scan QR Code Now For 2D/3D Drawings, IES Files, Spec Sheets & More



**SPECIFICATIONS**

<b>Luminous Efficacy</b>	140 lm/W
<b>CCT</b>	5000K, Other Options Available
<b>CRI</b>	Ra 70
<b>Beam Angle</b>	<b>30W/50W/100W:</b> D140 <b>150W-240W:</b> D135 Other Options Available
<b>Input Voltage</b>	<b>LV:</b> 120-277Vac <b>HV:</b> 277-480Vac
<b>IP Rating</b>	IP66 / NEMA 4X / IK08
<b>Operating Temp.</b>	-40°C ~ +65°C / -40°F ~ +149°F
<b>Driver</b>	Inventronics
<b>Chipset</b>	Lumileds
<b>Warranty</b>	5 Year Warranty
<b>Certifications</b>	UL, cUL, CSA
<b>Classifications</b>	CID2 Group A, B, C, D CIID1 Group E, F, G CIID2 Group F, G CIII

LUMENS	WATTAGE
33,600 lm	240W
28,000 lm	200W
21,000 lm	150W
14,000 lm	100W
7,000 lm	50W
4,000 lm	30W