

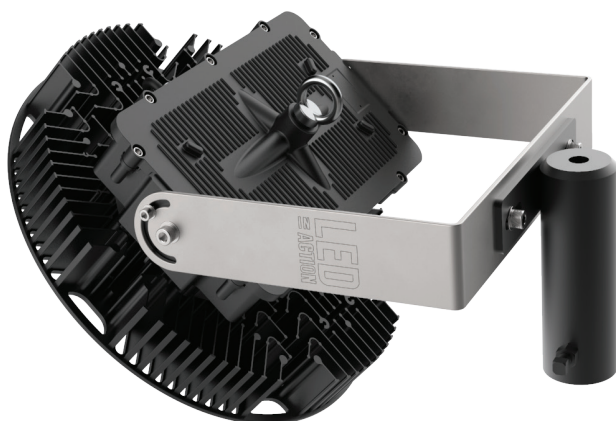
UNIVERSAL INDUSTRIAL LED
96,000 LUMENS

The most compact 1000 watt HID equivalent on the market! At only 32 lbs & up to 96,000lm, the SL can deliver ample lumens up to 130' mounting heights. Using only the best quality components proven to last in heavy industrial plants since 2008. Install it anywhere with our universal mounting options including overhead cranes, high bay, flood/area lighting, and outdoor pole/mast lighting.

Ideal for harsh environments found at heavy industrial plants in North America!

KEY FEATURES:

- **96,000 Lumens & 160 lm/W**
- Industry Leading 20kA Surge Protection (Comes Pre-Installed on 100V-480V models)
- **Easy Installation:** Only 32 pounds Including the 347V, 480V Model
- **Easy Access Driver Box with 6' External Pigtail**
- **IP66 & Universal Mounting Options** For Any Industrial Application Inside & Out At Your Facility



SPECIFICATIONS

Luminous Efficacy	160 lm/W
CCT	5000K, Other Options Available
CRI	>Ra 70
Beam Angle	30°, 60°, 90°, 120° (Standard)
Input Voltage	LV: 100-277Vac (250Vdc) HV: 277-480Vac
IP Rating	IP66
L70 Lifespan	L90 >54,000 Hours @ 85°C
LED Driver	Inventronics
Chipset	Seoul
Operating Temp.	-40°C ~ +65°C / -40°F ~ +149°F
Warranty	5 Year Warranty
Certifications	DLC, ETL, UL, cUL

LUMENS	LED WATTAGE
96,000 lm	600W

MOUNTING OPTIONS

HIGH BAY	AREA/FLOOD LIGHT	MAST LIGHT	CRANE LIGHT
			
LOOP HANGING (STANDARD)	BRACKET 24	BRACKET 24 + BRACKET 07 (SLIP FITTER)	BRACKET 24
FEMALE 3/4" NPT LID	HOOK	90° ALU SHADE	VISOR
			
NPT	HK	90ALU	VISOR

FIXTURE ORDERING MATRIX

Product Name	Wattage	Lens Degree	Input Voltage	CCT	Options
BE-SL	600W	D30 D60 D90 D120 (Standard) D120HT (High Temp ROBAX Glass)	LV 100-277Vac HV 277-480Vac	5000K Other Options Available	07 Slip Fitter 24 Adjustable Bracket HK Hook NPT Female 3/4" NPT Lid 90ALU 90° Aluminum Shade VISOR Visor SC (Included) Safety Cable SGS (Included) 20kA Surge Suppressor RM Remote Mount Driver

Example: BE-SL-600W-D120-LV-5000K-24-SC-SGS